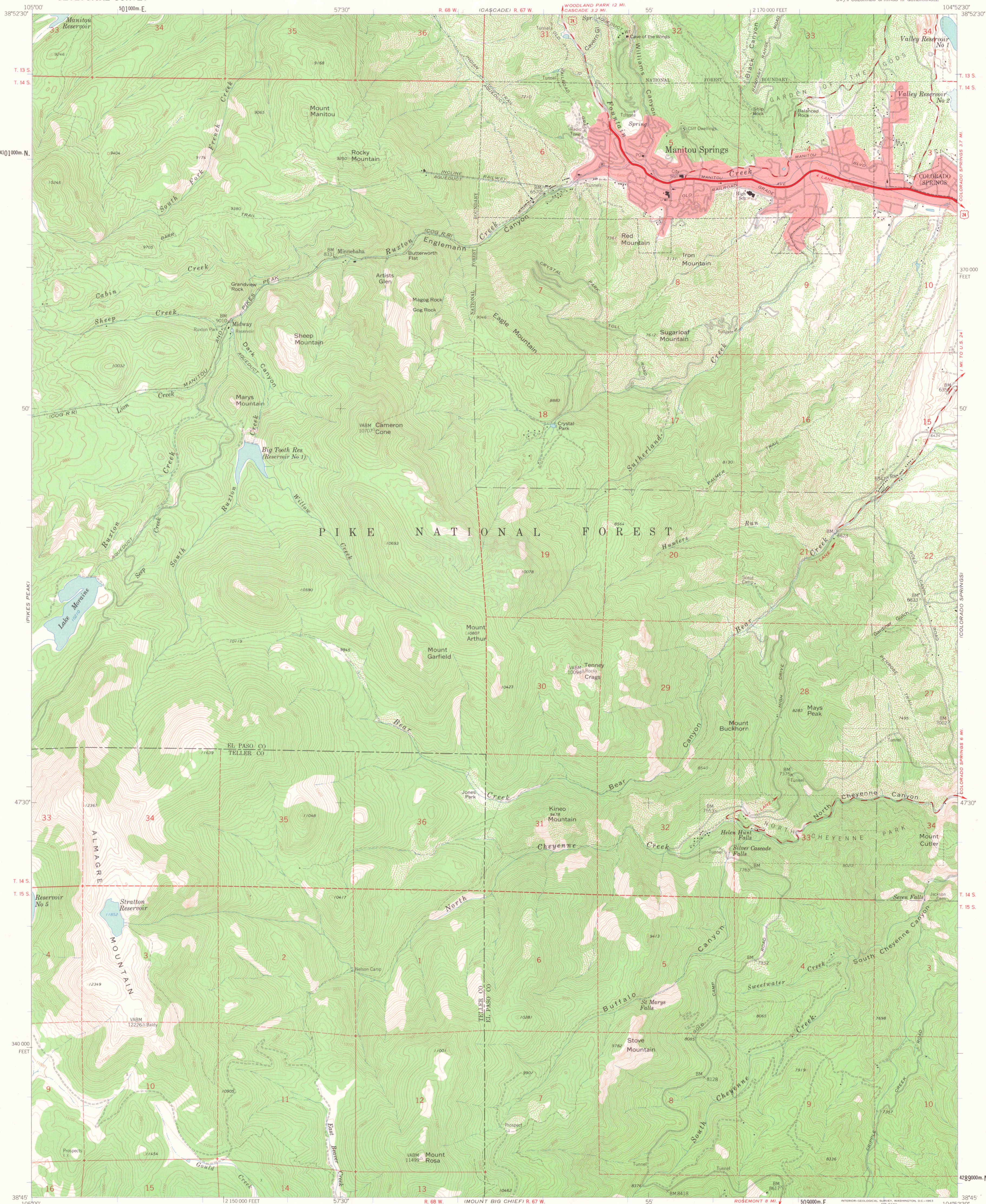


UNITED STATES
DEPARTMENT OF THE INTERIOR
GEOLOGICAL SURVEY

MANITOU SPRINGS QUADRANGLE
COLORADO
7.5 MINUTE SERIES (TOPOGRAPHIC)



Mapped, edited, and published by the Geological Survey
in cooperation with U.S. Corps of Engineers

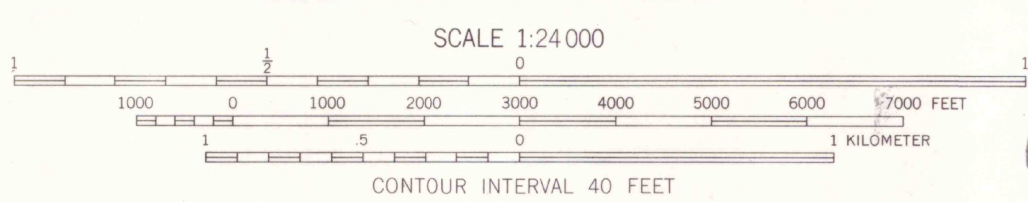
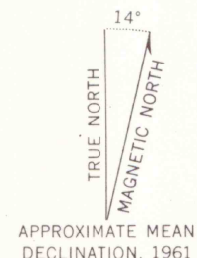
Control by USGS and USC&GS

Topography by photogrammetric methods from aerial photographs
taken 1947. Field checked 1948. Revised from aerial photographs
taken 1960. Field checked 1961

Polyconic projection. 1927 North American datum
10,000-foot grid based on Colorado coordinate system, central zone
1000-meter Universal Transverse Mercator grid ticks,
zone 13, shown in blue

Red tint indicates area in which only landmark buildings are shown

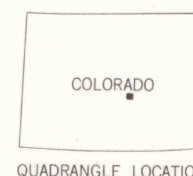
Where omitted, land lines have not been established or are
not shown because of insufficient data



JAN 19 2006

MAP ROOM
ARTHUR LAKES LIBRARY
SCHOOL OF MINES

THIS MAP COMPLIES WITH NATIONAL MAP ACCURACY STANDARDS
FOR SALE BY U.S. GEOLOGICAL SURVEY, DENVER 25, COLORADO OR WASHINGTON 25, D.C.
A FOLDER DESCRIBING TOPOGRAPHIC MAPS AND SYMBOLS IS AVAILABLE ON REQUEST



OFFICE COPY
LIBRARY USE ONLY

ROAD CLASSIFICATION
Heavy-duty ——— Light-duty ———
Medium-duty ——— Unimproved dirt ———
U.S. Route

MANITOU SPRINGS, COLO.
SW 1/4 COLORADO SPRINGS 15' QUADRANGLE
N3845-W10452.5/7.5

1961

G 3700
424
04
MAP ROOM