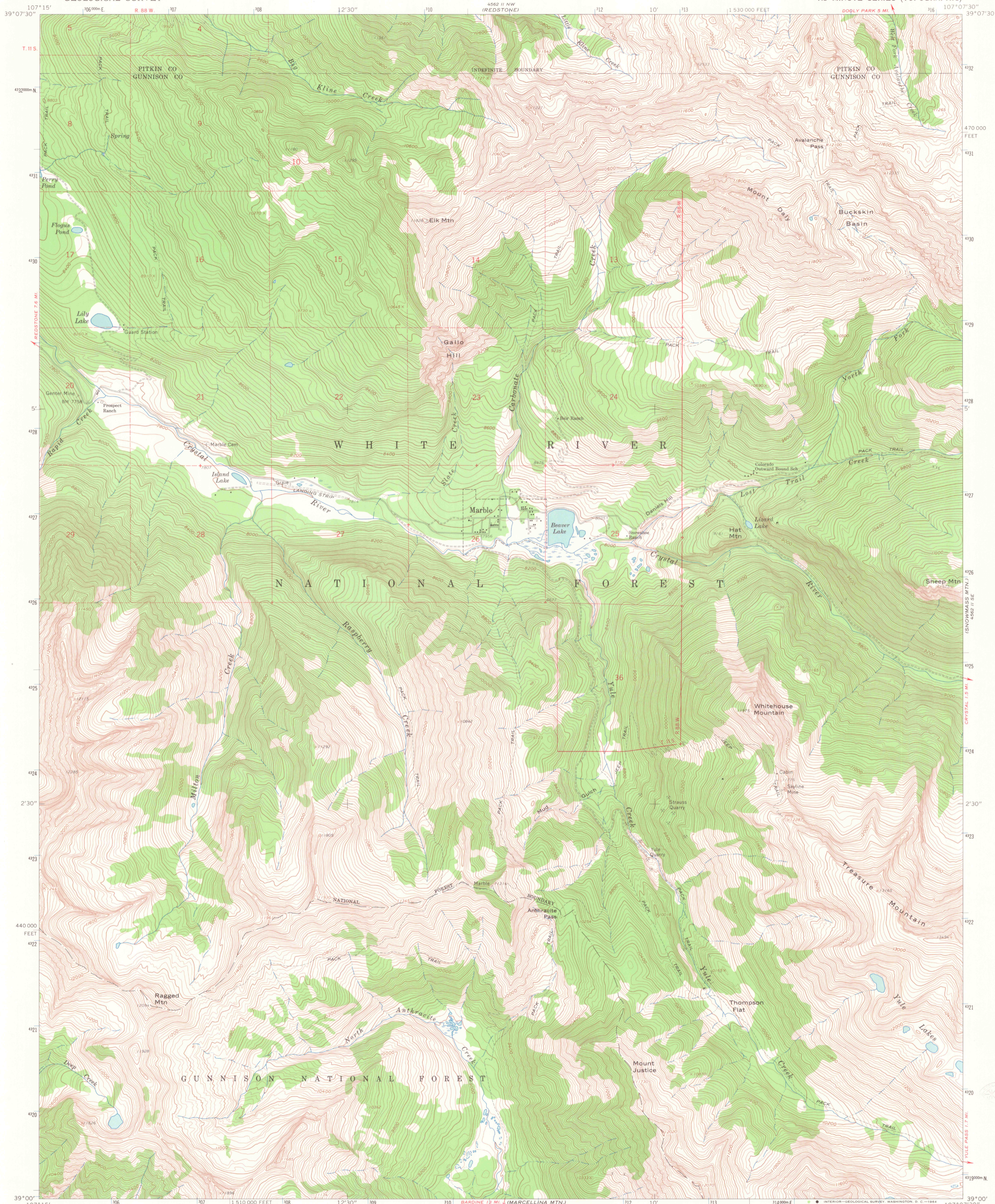


UNITED STATES
DEPARTMENT OF THE INTERIOR
GEOLOGICAL SURVEY

MARBLE QUADRANGLE
COLORADO
7.5 MINUTE SERIES (TOPOGRAPHIC)



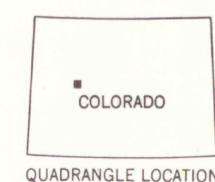
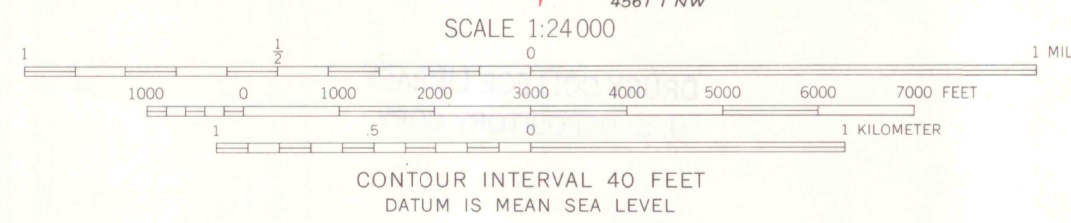
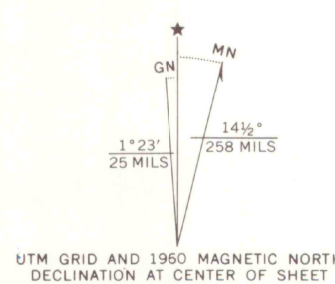
Mapped, edited, and published by the Geological Survey

Control by USGS and USC&GS

Topography by photogrammetric methods from aerial photographs taken 1958. Field checked 1960

Polyconic projection. 1927 North American datum
10,000-foot grid based on Colorado coordinate system,
central zone
1000-meter Universal Transverse Mercator grid ticks,
zone 13, shown in blue

Where omitted, land lines have not been established
or are not shown because of insufficient data



Light-duty
Department of Geography and Geology
Southwest Missouri State University
Springfield, Missouri 65802

ROAD CLASSIFICATION

Unimproved dirt

MARBLE, COLO.
N3900-W10707.5/7.5

1960

AMS 4562 II SW-SERIES Y877

SEP 26 2003

MAP ROOM
4310
s24