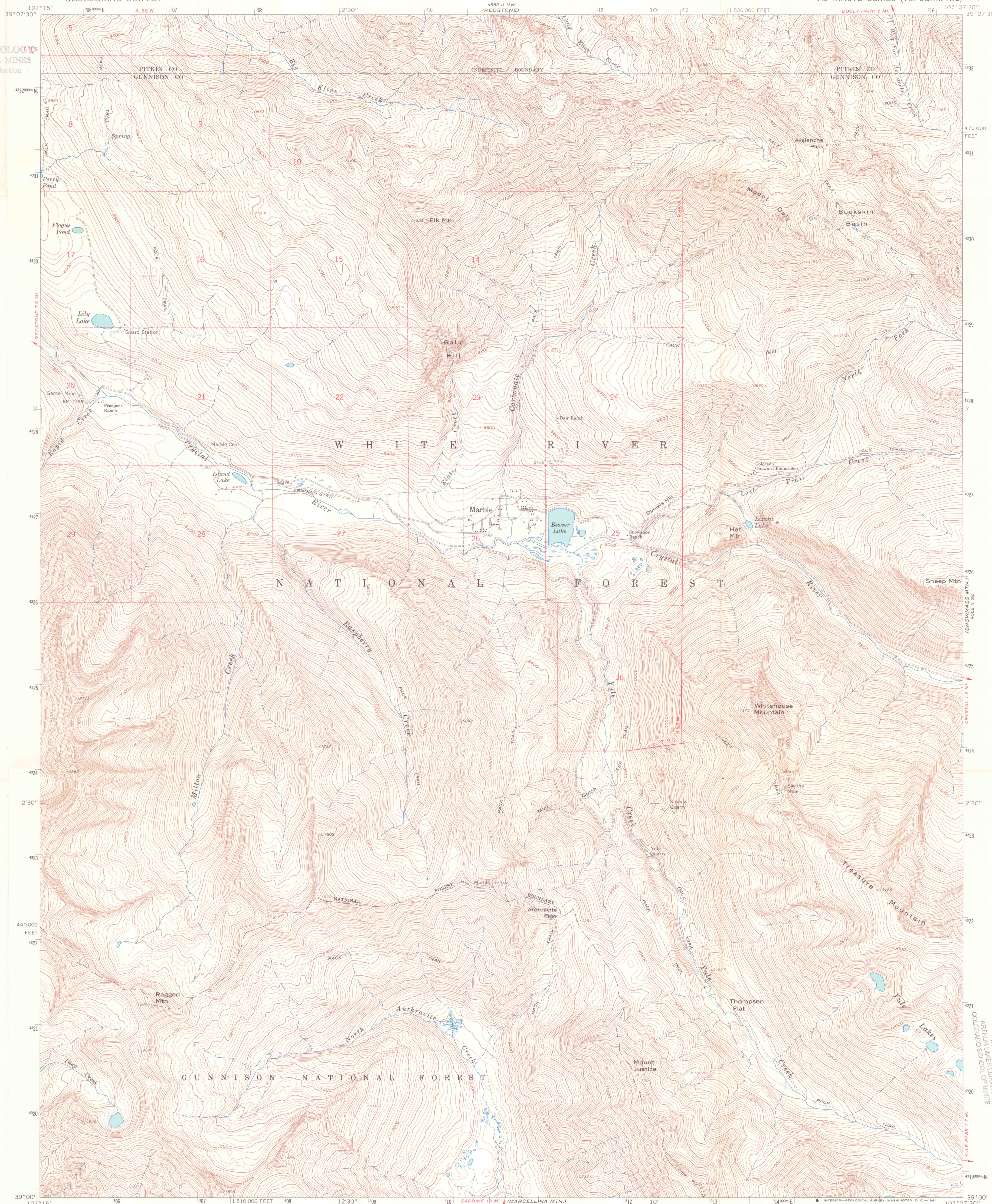
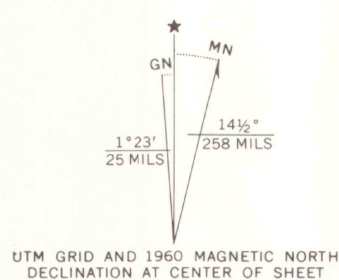


DEPT. OF GEOLOGY
SCHOOL MINES
Reference Collection

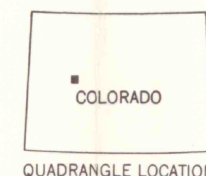
DEPT. OF GEOLOGY
SCHOOL MINES
Reference Collection



Mapped, edited, and published by the Geological Survey
Control by USGS and USC&GS
Topography by photogrammetric methods from aerial
photographs taken 1958. Field checked 1960
Polyconic projection. 1927 North American datum
10,000-foot grid based on Colorado coordinate system,
central zone
1000-meter Universal Transverse Mercator grid ticks,
zone 13, shown in blue
Where omitted, land lines have not been established
or are not shown because of insufficient data



SCALE 1:24,000
1 0 1000 2000 3000 4000 5000 6000 7000 FEET
1 0 5 10 15 20 KILOMETER
CONTOUR INTERVAL 40 FEET
DATUM IS MEAN SEA LEVEL



ROAD CLASSIFICATION
Light-duty ————— Unimproved dirt —————

MARBLE, COLO.
N3900-W10707.5/7.5

1960

AMS 4562 II SW-SERIES W877

G 3700
s24
.G4
MAP ROOM

FEB 19 2002



ARTHUR LAKES LIBRARY
COLORADO SCHOOL OF MINES