

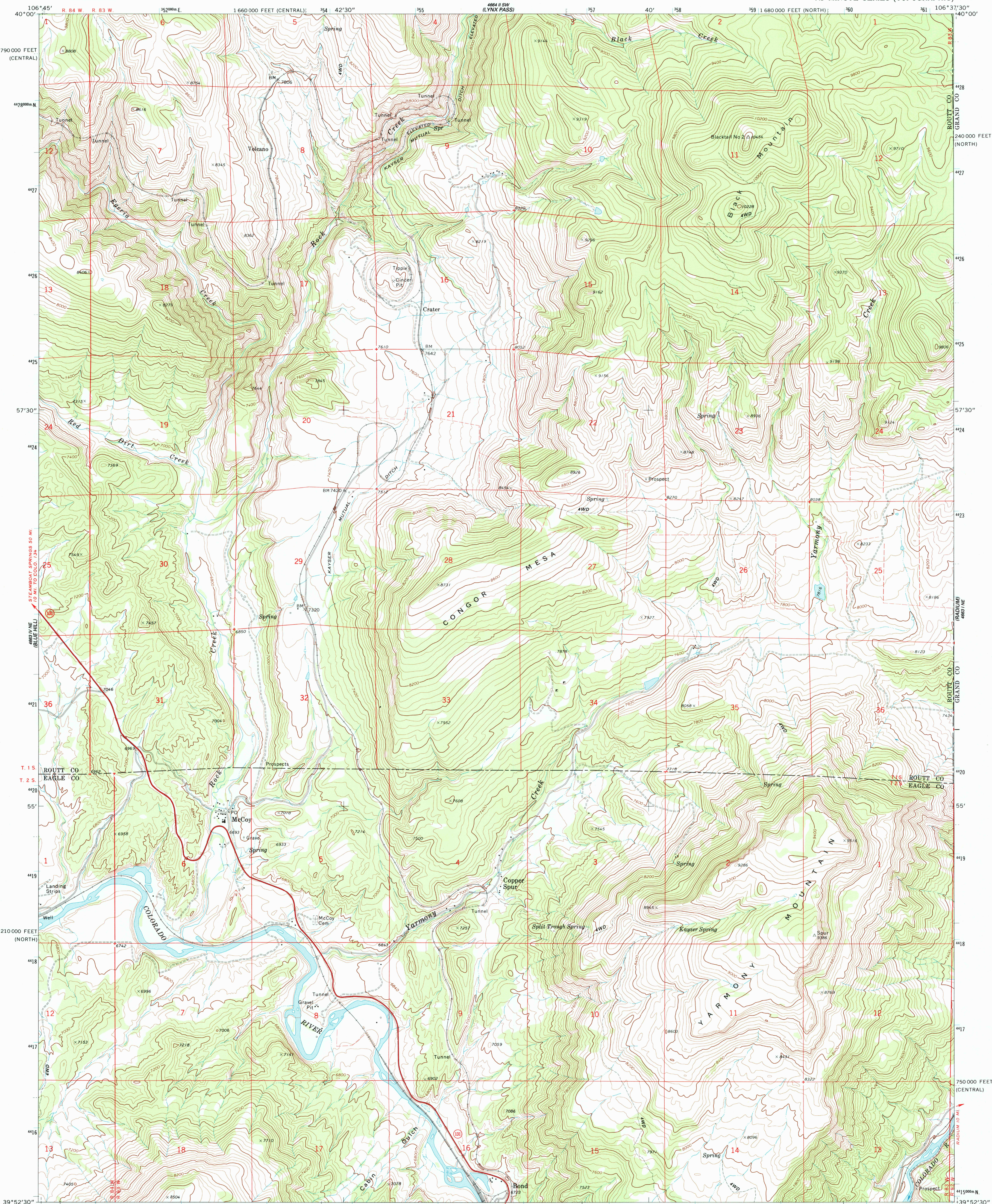
Scale 1:24,000
(NAD 83)



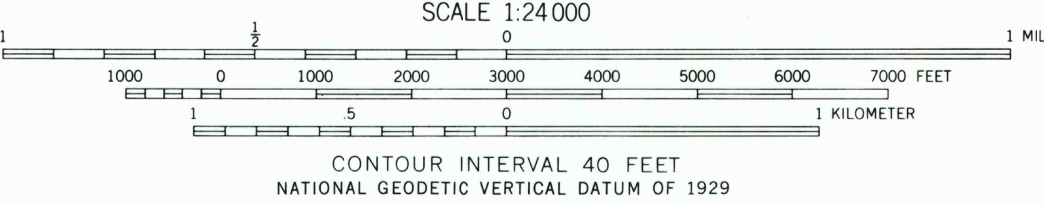
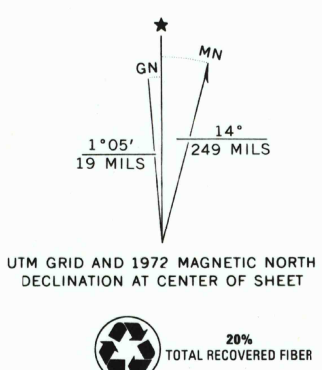
U.S. DEPARTMENT OF THE INTERIOR
U.S. GEOLOGICAL SURVEY

MC COY QUADRANGLE
COLORADO
7.5 MINUTE SERIES (TOPOGRAPHIC)

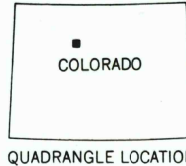
Scale 1:24,000
(NAD 83)



Mapped, edited, and published by the Geological Survey
Control by USGS, NOS/NOAA, and U.S. Forest Service
Topography by photogrammetric methods from aerial photographs
taken 1971. Field checked 1972
Projection: Colorado coordinate system, north zone
(Lambert conformal conic)
10,000-foot grid ticks based on Colorado coordinate system
north and central zones
1000-meter Universal Transverse Mercator grid ticks, zone 13
shown in blue. 1927 North American Datum
The difference between 1927 North American Datum
and North American Datum of 1983 (NAD 83) for 7.5 minute
intersections is given in USGS Bulletin 1875. The NAD 83
is shown by dashed corner ticks
Fine red dashed lines indicate selected fence lines



THIS MAP COMPLIES WITH NATIONAL MAP ACCURACY STANDARDS
FOR SALE BY U.S. GEOLOGICAL SURVEY, P.O. BOX 25286, DENVER, COLORADO 80225
A FOLDER DESCRIBING TOPOGRAPHIC MAPS AND SYMBOLS IS AVAILABLE ON REQUEST



ROAD CLASSIFICATION
Primary highway, hard surface
Secondary highway, hard surface
Unimproved road
Interstate Route
U. S. Route
State Route

RECEIVED
AUG 31 2001
MC COY, COLO.
39106-H6-TF-024
1972
DMA 4663 1 NW-SERIES V877

