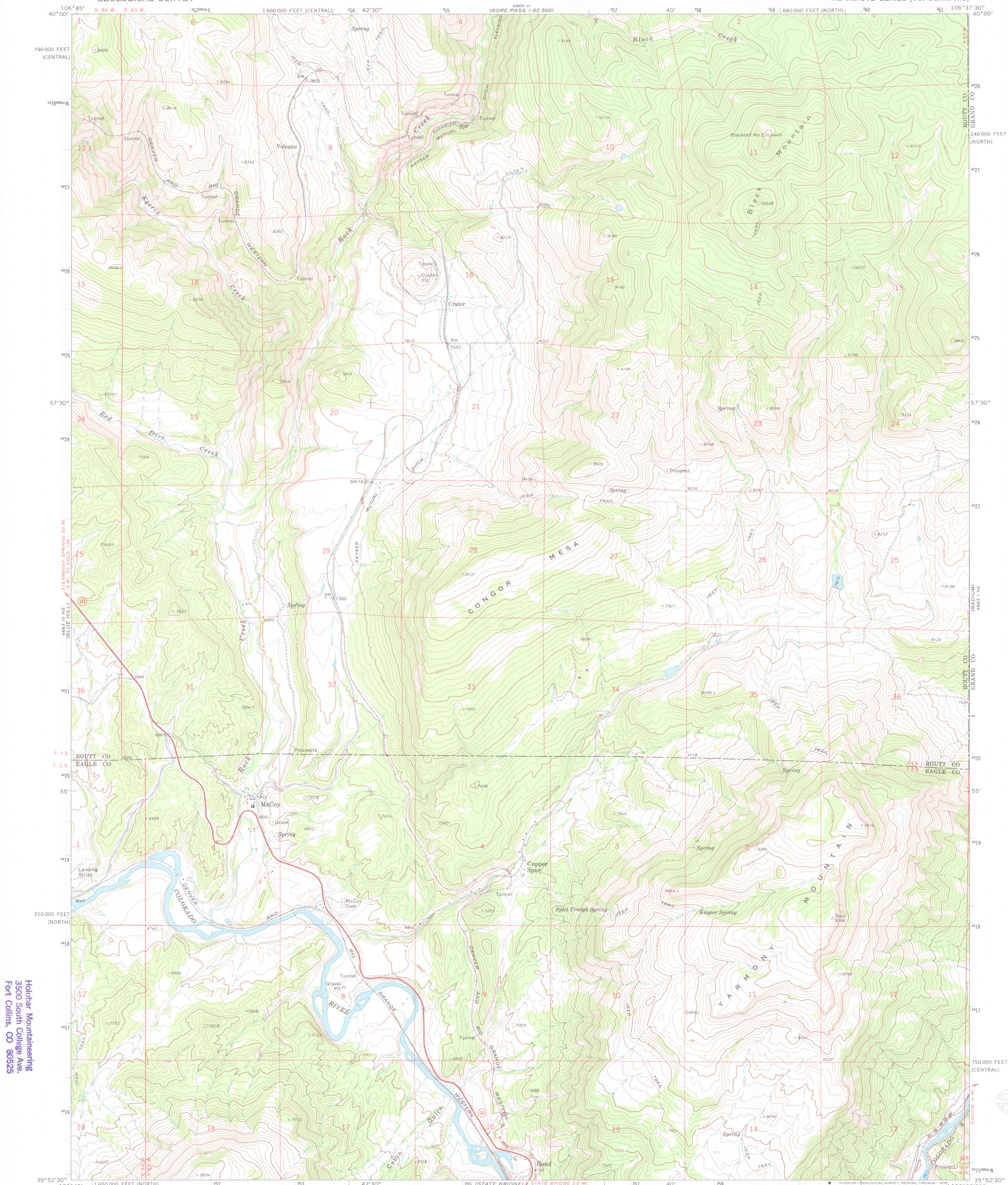


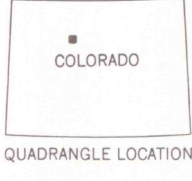
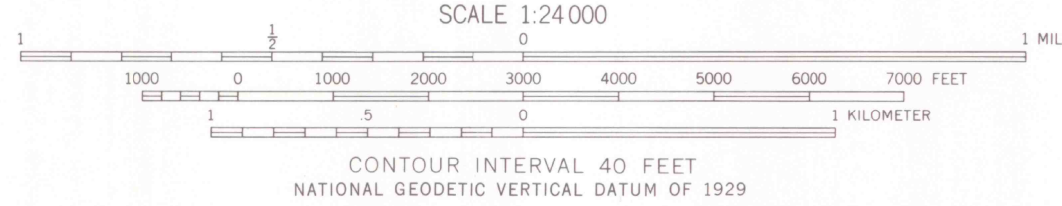
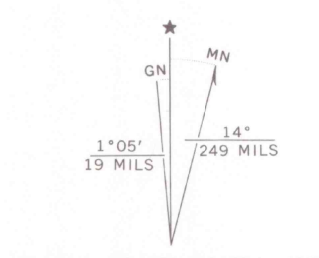
UNITED STATES
DEPARTMENT OF THE INTERIOR
GEOLOGICAL SURVEY

MC COY QUADRANGLE
COLORADO
7.5 MINUTE SERIES (TOPOGRAPHIC)



Holubar Mountaineering
3500 South College Ave.
Fort Collins, CO 80525

Mapped, edited, and published by the Geological Survey
Control by USGS, USC&GS, and U. S. Forest Service
Topography by photogrammetric methods from aerial
photographs taken 1971. Field checked 1972
Projection: Colorado coordinate system, north zone
(Lambert conformal conic)
10,000-foot grid ticks based on Colorado coordinate system,
north and central zones
1000-meter Universal Transverse Mercator grid ticks,
zone 13, shown in blue. 1927 North American datum
Fine red dashed lines indicate selected fence lines



ROAD CLASSIFICATION
Primary highway, hard surface
Secondary highway, hard surface
Light-duty road, hard or improved surface
Unimproved road
Interstate Route
U. S. Route
State Route

MC COY, COLO.
N3952.5-W10637.5/7.5

1972

AMS 4663 1 NW-SERIES V877

THIS MAP COMPLIES WITH NATIONAL MAP ACCURACY STANDARDS
FOR SALE BY U.S. GEOLOGICAL SURVEY, DENVER, COLORADO 80225, OR RESTON, VIRGINIA 22092
A FOLDER DESCRIBING TOPOGRAPHIC MAPS AND SYMBOLS IS AVAILABLE ON REQUEST

DEC 29 2006

G 3700
s24
G4
MAP ROOM