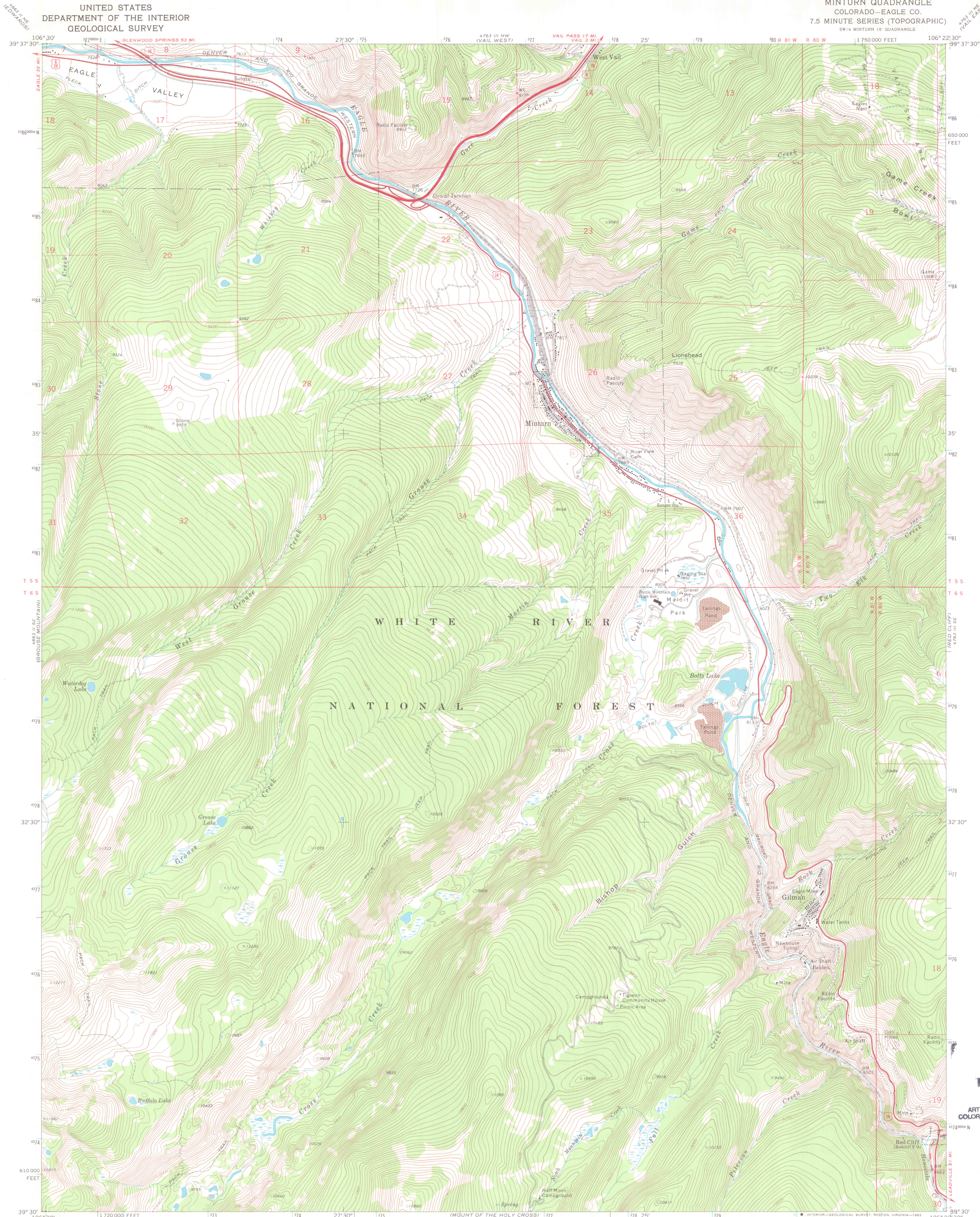


UNITED STATES
DEPARTMENT OF THE INTERIOR
GEOLOGICAL SURVEY

MINTURN QUADRANGLE
COLORADO—EAGLE CO.
7.5 MINUTE SERIES (TOPOGRAPHIC)
SW 1/4 MINTURN 15' QUADRANGLE
1:750 000 FEET

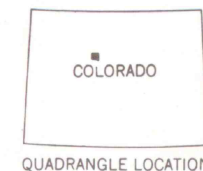
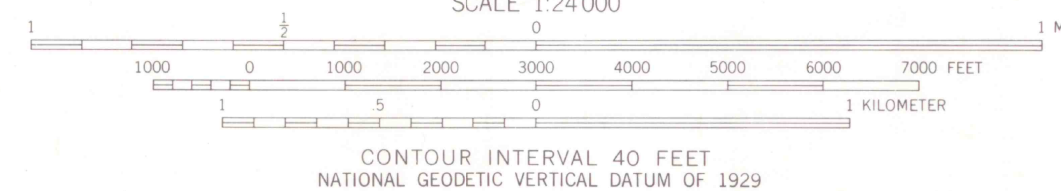


Mapped, edited, and published by the Geological Survey

Control by USGS and USC&GS
Topography by photogrammetric methods from aerial
photographs taken 1969. Field checked 1970
Polyconic projection. 1927 North American datum
10,000-foot grid based on Colorado coordinate system,
central zone
1000-meter Universal Transverse Mercator grid ticks,
zone 13, shown in blue
Fine red dashed lines indicate selected fence lines
Where omitted, land lines have not been established
To place on the predicted North American Datum 1983
move the projection lines 5 meters north and
51 meters east as shown by dashed corner ticks

There may be private inholdings within the boundaries of
the National or State reservations shown on this map

THIS MAP COMPLIES WITH NATIONAL MAP ACCURACY STANDARDS
FOR SALE BY U. S. GEOLOGICAL SURVEY, DENVER, COLORADO 80225, OR RESTON, VIRGINIA 22092
A FOLDER DESCRIBING TOPOGRAPHIC MAPS AND SYMBOLS IS AVAILABLE ON REQUEST



QUADRANGLE LOCATION

Map photoinspected 1979
No major culture or drainage changes observed

ROAD CLASSIFICATION
Primary highway, hard surface
Secondary highway, hard surface
Unimproved road
Interstate Route
U. S. Route
State Route

MINTURN, COLO.
SW 1/4 MINTURN 15' QUADRANGLE
N 3930-W 10622.5-7.5

1970
PHOTOINSPECTED 1979
DMA 4763 III SW-SERIES V877

MAY 27 1998
MAP ROOM
ARTHUR LAKES L.
COLORADO SCHOOL OF MINES

OFFICE COPY

3701
C222
S24
U5