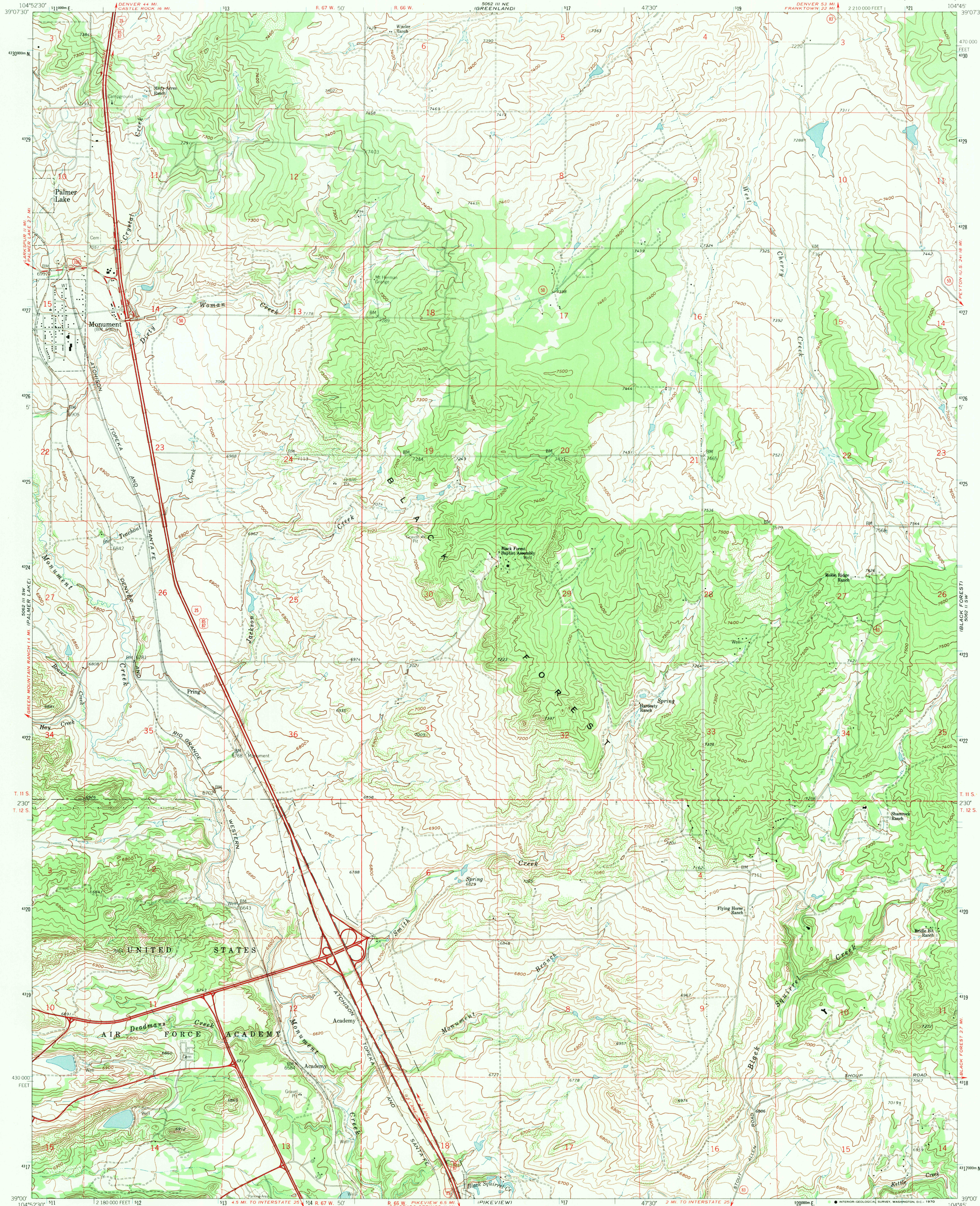


UNITED STATES  
DEPARTMENT OF THE INTERIOR  
GEOLOGICAL SURVEY

MONUMENT QUADRANGLE  
COLORADO-EL PASO CO.  
7.5 MINUTE SERIES (TOPOGRAPHIC)



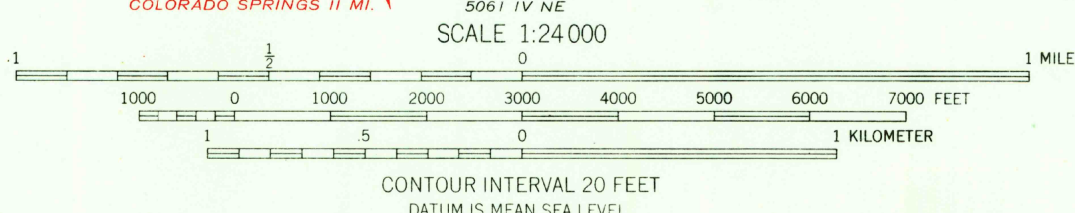
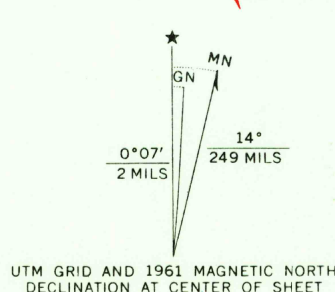
Mapped, edited, and published by the Geological Survey  
in cooperation with U. S. Corps of Engineers

Control by USGS and USC&GS

Topography by photogrammetric methods from aerial photographs  
taken 1952. Field checked 1954. Revised from aerial photographs  
taken 1960. Field checked 1961

Polyconic projection. 1927 North American datum.  
10,000-foot grid based on Colorado coordinate system, central zone  
1000-meter Universal Transverse Mercator grid ticks,  
zone 13, shown in blue

Fine red dashed lines indicate selected fence and field lines where  
generally visible on aerial photographs. This information is unchecked



THIS MAP COMPLIES WITH NATIONAL MAP ACCURACY STANDARDS  
FOR SALE BY U. S. GEOLOGICAL SURVEY, DENVER, COLORADO 80225 OR WASHINGTON, D. C. 20242  
A FOLDER DESCRIBING TOPOGRAPHIC MAPS AND SYMBOLS IS AVAILABLE ON REQUEST

USGS  
Historical File  
Topographic Division



FILE COPY  
TOPOGRAPHIC DIVISION

U.S.G.S.

ROAD CLASSIFICATION  
Heavy-duty ——— Light-duty ———  
Medium-duty ——— Unimproved dirt ———  
Interstate Route ——— U.S. Route ——— State Route ———

MONUMENT, COLO.  
N3900-W10445/7.5

1961

AMS 5062 III, SE-SERIES V877

1750  
NOV 1 1969