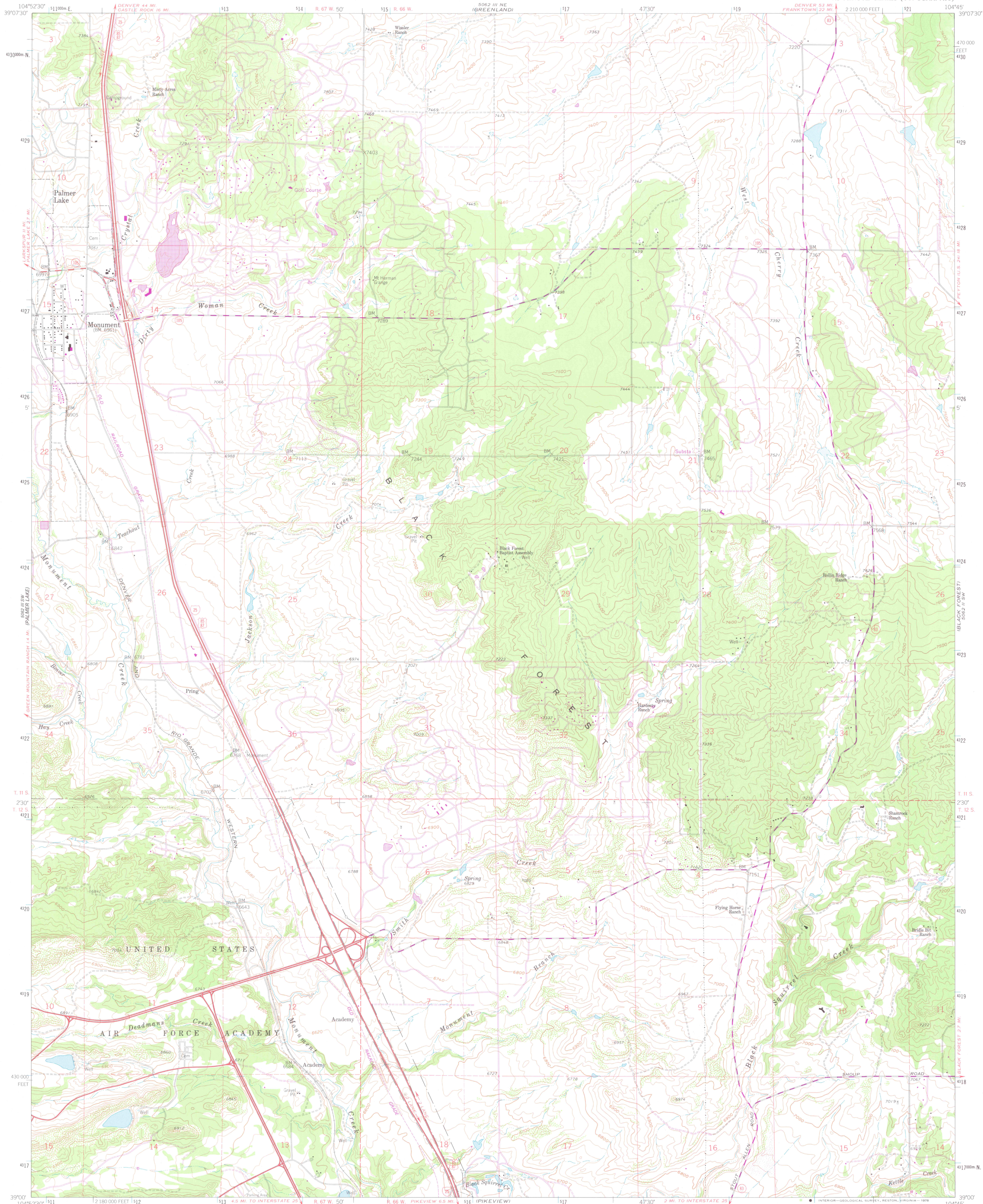


UNITED STATES  
DEPARTMENT OF THE INTERIOR  
GEOLOGICAL SURVEY

MONUMENT QUADRANGLE  
COLORADO-EL PASO CO.  
7.5 MINUTE SERIES (TOPOGRAPHIC)



Mapped, edited, and published by the Geological Survey  
in cooperation with U. S. Corps of Engineers

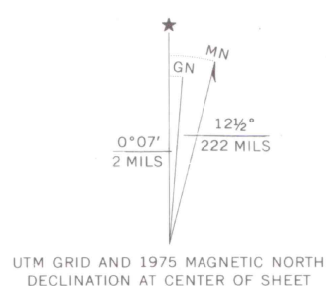
Control by USGS and NOS/NOAA

Topography by photogrammetric methods from aerial photographs  
taken 1952. Field checked 1954. Revised from aerial photographs  
taken 1960. Field checked 1961

Polyconic projection. 1927 North American datum  
10,000-foot grid based on Colorado coordinate system, central zone  
1000-meter Universal Transverse Mercator grid ticks,  
zone 13, shown in blue

Fine red dashed lines indicate selected fence and field lines where  
generally visible on aerial photographs. This information is unchecked

Revisions shown in purple compiled from aerial photographs  
taken 1969 and 1975. This information not field checked



SCALE 1:24,000  
CONTOUR INTERVAL 20 FEET  
NATIONAL GEODETIC VERTICAL DATUM OF 1929

THIS MAP COMPLIES WITH NATIONAL MAP ACCURACY STANDARDS  
FOR SALE BY U. S. GEOLOGICAL SURVEY, DENVER, COLORADO 80225, OR RESTON, VIRGINIA 22092  
A FOLDER DESCRIBING TOPOGRAPHIC MAPS AND SYMBOLS IS AVAILABLE ON REQUEST

ROAD CLASSIFICATION  
Heavy-duty ——— Light-duty ———  
Medium-duty ——— Unimproved dirt ———  
Interstate Route ——— U.S. Route ——— State Route ———  
QUADRANGLE LOCATION  
COLORADO

MONUMENT, COLO.  
N3900-W10445/7.5

1961  
PHOTOREVISED 1969 AND 1975  
AMS 5062 III SE-SERIES V877

OFFICE COPY

LIBRARY USE ONLY