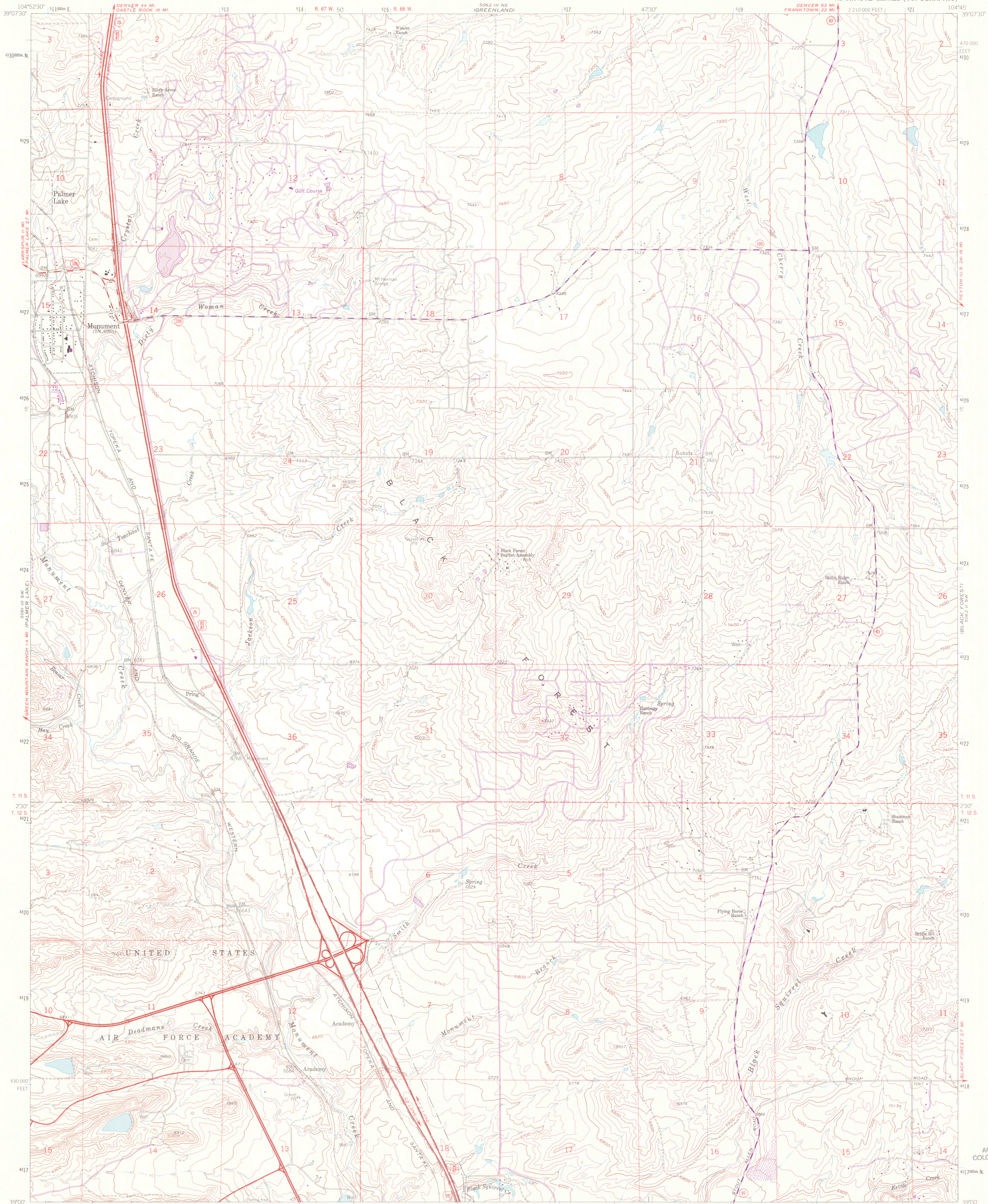


5062 III NE
LARKSPUR

5062 III NW
CHERRY VALE SCHOOL

UNITED STATES
DEPARTMENT OF THE INTERIOR
GEOLOGICAL SURVEY

MONUMENT QUADRANGLE
COLORADO-EL PASO CO.
7.5 MINUTE SERIES (TOPOGRAPHIC)



Mapped, edited, and published by the Geological Survey
in cooperation with U. S. Corps of Engineers

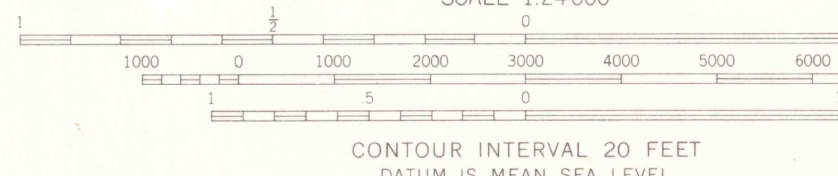
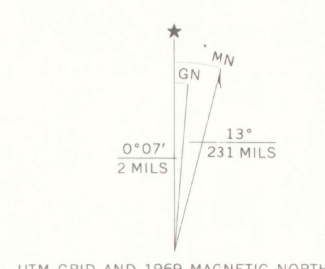
Control by USGS and USC&GS

Topography by photogrammetric methods from aerial photographs
taken 1952. Field checked 1954. Revised from aerial photographs
taken 1960. Field checked 1961.

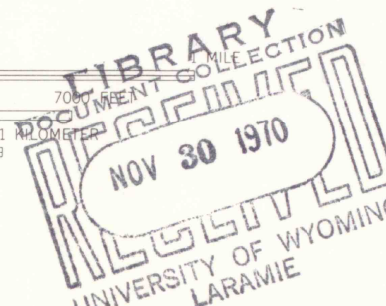
Polyconic projection. 1927 North American datum
10,000-foot grid based on Colorado coordinate system, central zone
1000-meter Universal Transverse Mercator grid ticks,
zone 13, shown in blue

Fine red dashed lines indicate set fence and field lines where
generally visible on aerial photographs. This information is unchecked

Revisions shown in purple compiled from aerial photographs
taken 1969. This information not field checked



CONTOUR INTERVAL 20 FEET
DATUM IS MEAN SEA LEVEL



ROAD CLASSIFICATION	
Heavy-duty	Light-duty
Medium-duty	Unimproved dirt
Interstate Route	U.S. Route
	State Route

OFFICE COPY
LIBRARY USE ONLY

MONUMENT, COLO.
N3900-W10445/7.5

1961
PHOTOREVISED 1969
AMS 5062 III SE-SERIES V877

JUL 0 6 2000

MAP FROM
ARTHUR LAKES LIBRARY
COLORADO SCHOOL OF MINES

G37 00
\$24
.64

G37005
c1
w/p un3