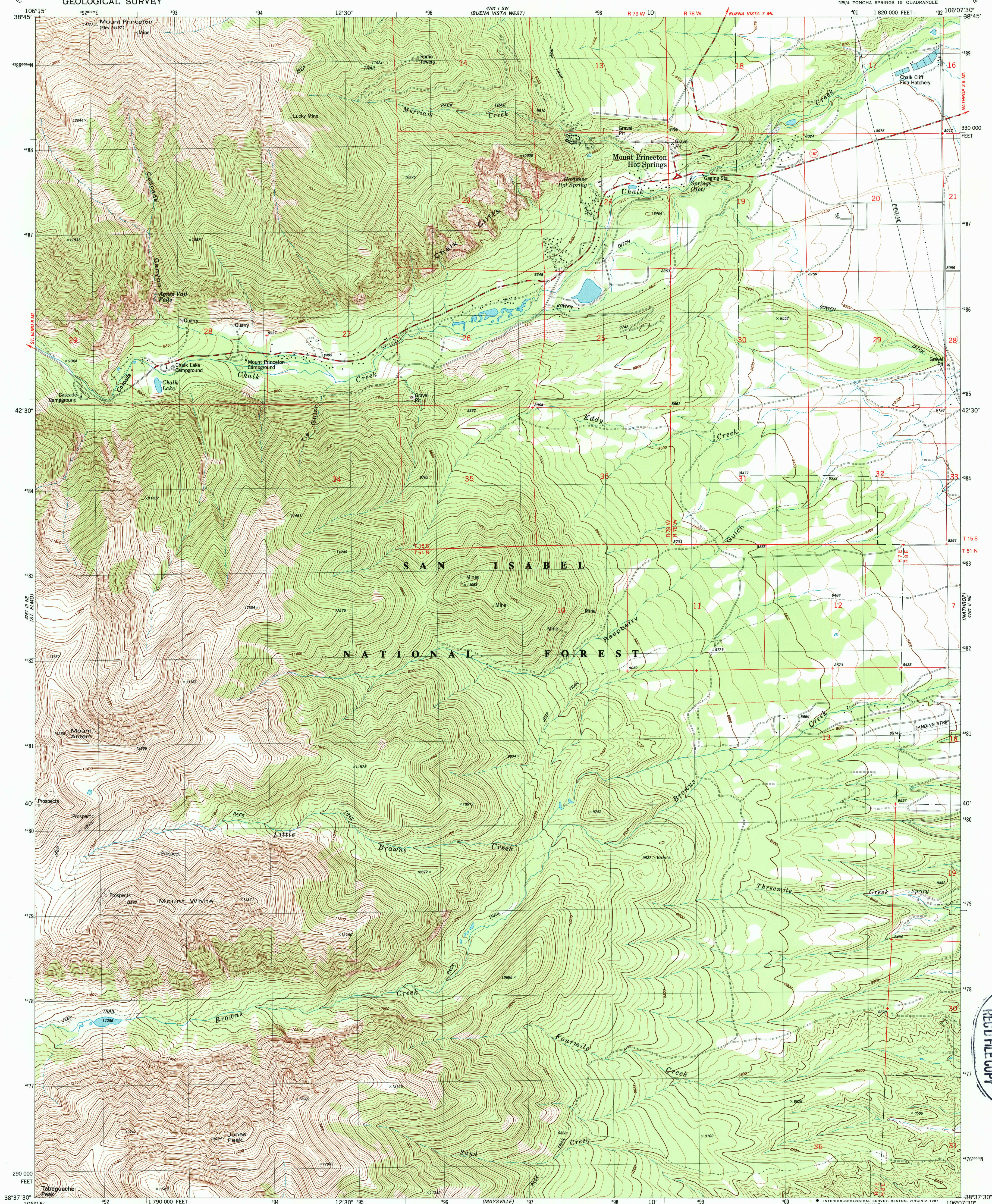


UNITED STATES
DEPARTMENT OF THE INTERIOR
GEOLOGICAL SURVEY

MOUNT ANTERO QUADRANGLE
COLORADO-CHAFFEE CO.
7.5 MINUTE SERIES (TOPOGRAPHIC)



Mapped, edited, and published by the Geological Survey

Control by USGS and NOS/NOAA

Topography by photogrammetric methods from aerial photographs taken 1975. Field checked 1976. Map edited 1983

Projection and 10,000-foot grid ticks: Colorado coordinate system, central zone (Lambert conformal conic)

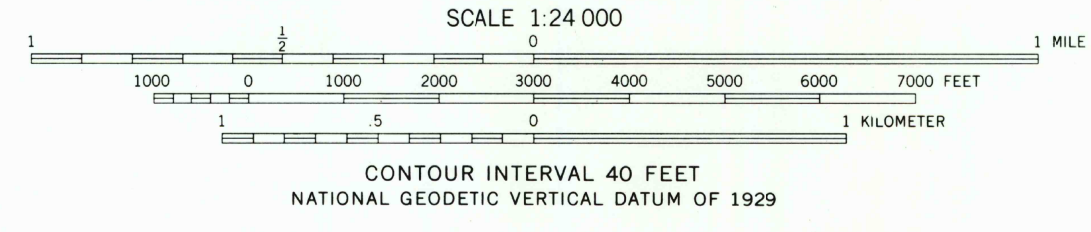
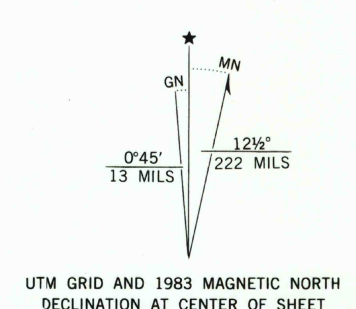
1000-meter Universal Transverse Mercator grid, zone 13 1927 North American Datum

To place on the predicted North American Datum 1983 move the projection lines 4 meters north and 51 meters east as shown by dashed corner ticks

Fine red dashed lines indicate selected fence lines

Certain land lines are omitted because of insufficient data

There may be private inholdings within the boundaries of the National or State reservations shown on this map



ROAD CLASSIFICATION	
Primary highway, hard surface	Light-duty road, hard or improved surface
Secondary highway, hard surface	Unimproved road
Interstate Route	U. S. Route
	State Route

MOUNT ANTERO, COLO.
NW/4 PONCHA SPRINGS 15' QUADRANGLE
38106-F2-TF-024

1983

DMA 4761 II NW-SERIES V877

USGS AND HISTORICAL MAP
JUN 8 1987
REC'D FILE COPY