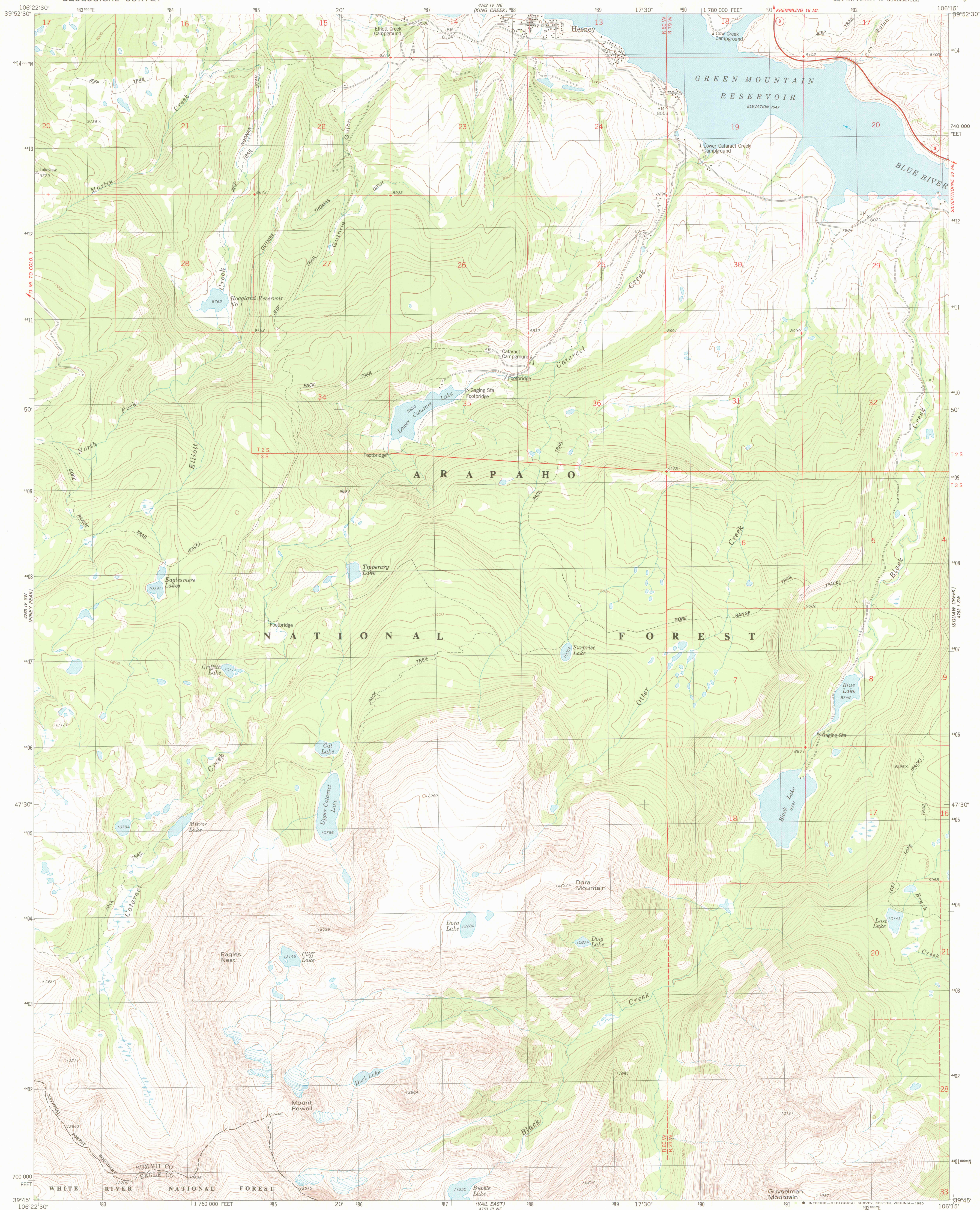


UNITED STATES  
DEPARTMENT OF THE INTERIOR  
GEOLOGICAL SURVEY

MOUNT POWELL QUADRANGLE  
COLORADO  
7.5 MINUTE SERIES (TOPOGRAPHIC)



Mapped, edited, and published by the Geological Survey

Control by USGS and NOS/NOAA, and U.S. Forest Service

Topography by photogrammetric methods from aerial photographs

taken 1975. Field checked 1976. Map edited 1980

Projection and 10,000-foot grid ticks: Colorado

coordinate system, central zone (Lambert conformal conic)

1000-meter Universal Transverse Mercator grid, zone 13

1927 North American datum

To place on the predicted North American Datum 1983

move the projection lines 5 meters north and

51 meters east as shown by dashed corner ticks

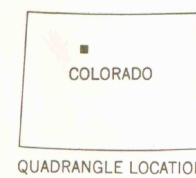
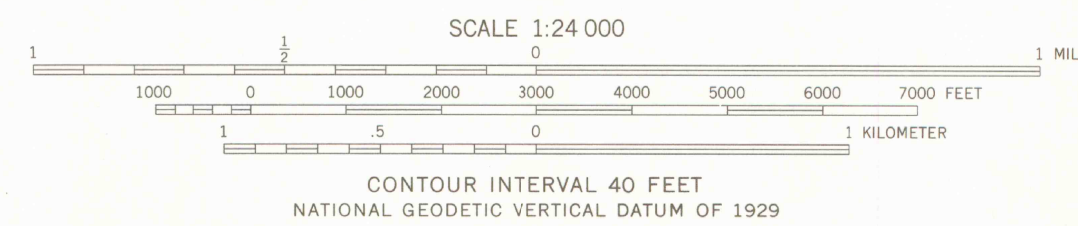
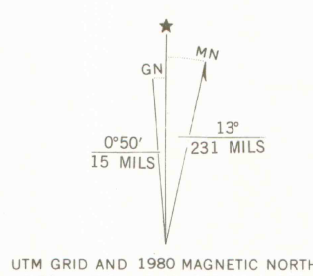
Fine red dashed lines indicate selected fence lines

Where omitted land lines have not been established

or are not shown because of insufficient data

There may be private inholdings within the boundaries of the

National or State reservations shown on this map



ROAD CLASSIFICATION	
Primary highway, hard surface	Light-duty road, hard or improved surface
Secondary highway, hard surface	Unimproved road
Interstate Route	U.S. Route
	State Route

MOUNT POWELL, COLO.  
SE/4 MT. POWELL, 15' QUADRANGLE  
N3945-W10615/7.5

AUG 21 1980

MAP ROOM

ARTHUR LAKES LIBRARY

DMA 4763 IV SE-SERIES V877  
LIBRARY USE ONLY

OFFICE COPY