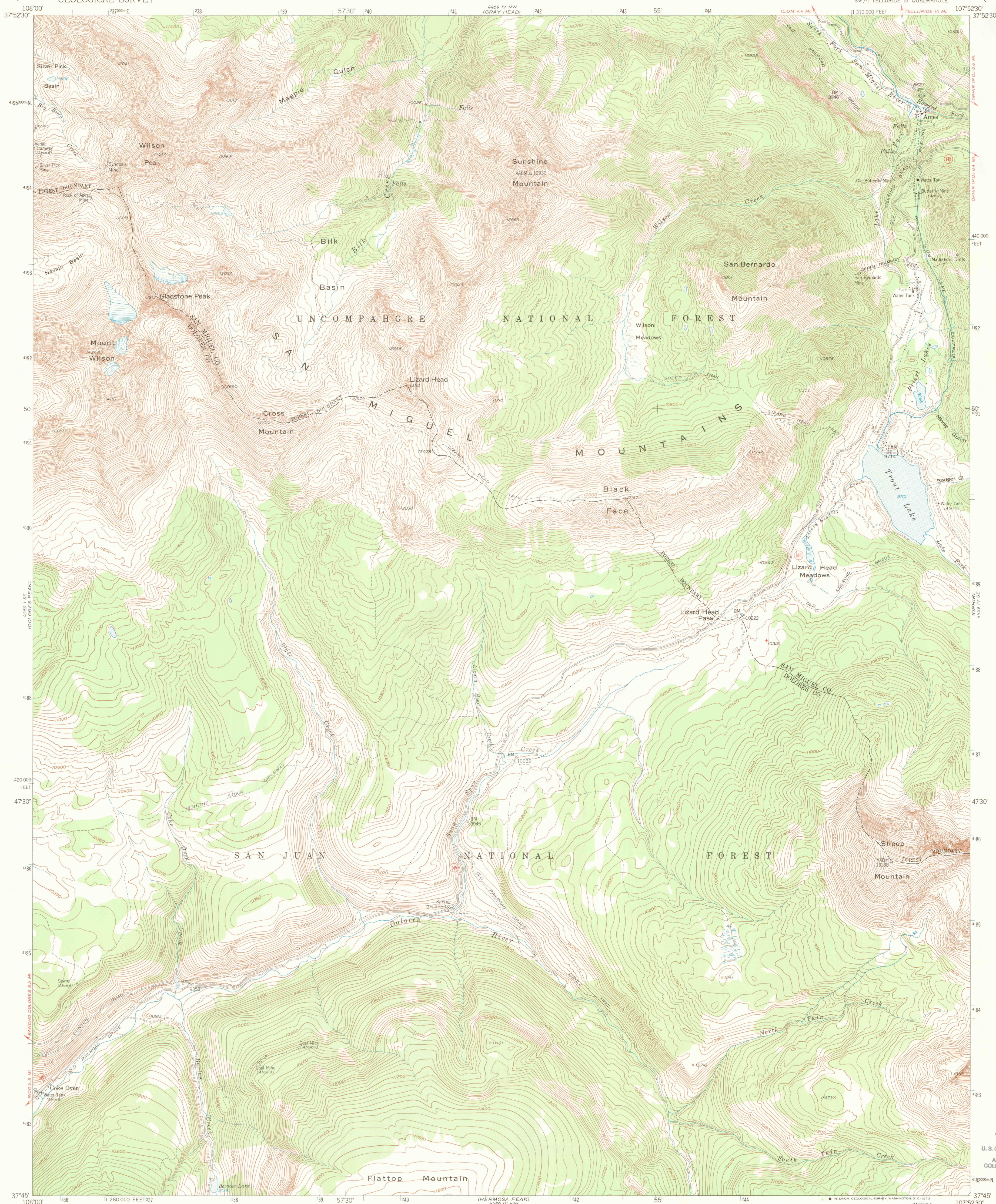


4459 IV NW
(GRAY HEAD)

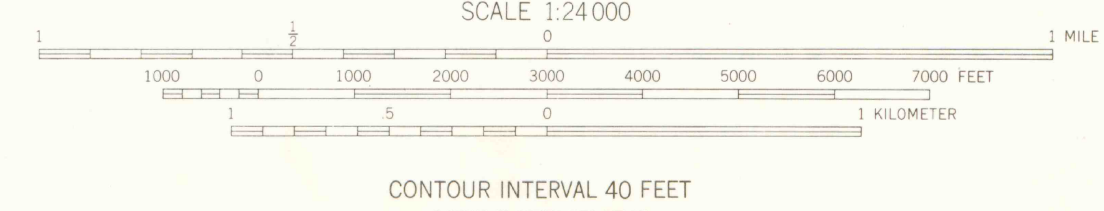
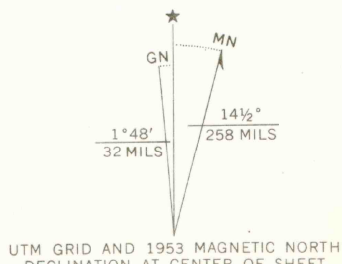
UNITED STATES
DEPARTMENT OF THE INTERIOR
GEOLOGICAL SURVEY

MOUNT WILSON QUADRANGLE
COLORADO
7.5 MINUTE SERIES (TOPOGRAPHIC)
SW/4 TELLURIDE 15 QUADRANGLE

4459 IV NE
(TELLURIDE)



Mapped, edited, and published by the Geological Survey
with cooperation by the Atomic Energy Commission
Control by USGS and USC&GS
Topography from aerial photographs by multiplex methods
Aerial photographs taken 1952. Field check 1953
Polyconic projection. 1927 North American datum
10,000-foot grid based on Colorado coordinate system,
south zone
1000-meter Universal Transverse Mercator grid ticks,
zone 13, shown in blue
Land lines are omitted in T. 41 N., T. 42 N., and T. 43 N.-R. 9 W. and
R. 10 W. because of insufficient data. All recovered corners are shown
All mining features on this map are inactive unless otherwise indicated



THIS MAP COMPLIES WITH NATIONAL MAP ACCURACY STANDARDS
FOR SALE BY U.S. GEOLOGICAL SURVEY, DENVER, COLORADO 80225, OR WASHINGTON, D. C. 20242
A FOLDER DESCRIBING TOPOGRAPHIC MAPS AND SYMBOLS IS AVAILABLE ON REQUEST



OFFICE COPY
FOR FIELD USE ONLY

ROAD CLASSIFICATION
Light-duty ————— Unimproved dirt —————
State Route

MOUNT WILSON, COLO.
SW/4 TELLURIDE 15 QUADRANGLE
N3745-W10752.5/7.5

1953
AMS 4459 IV SW-SERIES V877



JUL 10 1999
U. S. GOVERNMENT DEPOSITORY
FOR MAPS
ARTHUR LAKES LIBRARY
COLORADO SCHOOL OF MINES

G 3700
S24
G4
MAP ROOM

ENGINEER'S MOUNTAIN
G 371
S24
G4
MAP ROOM