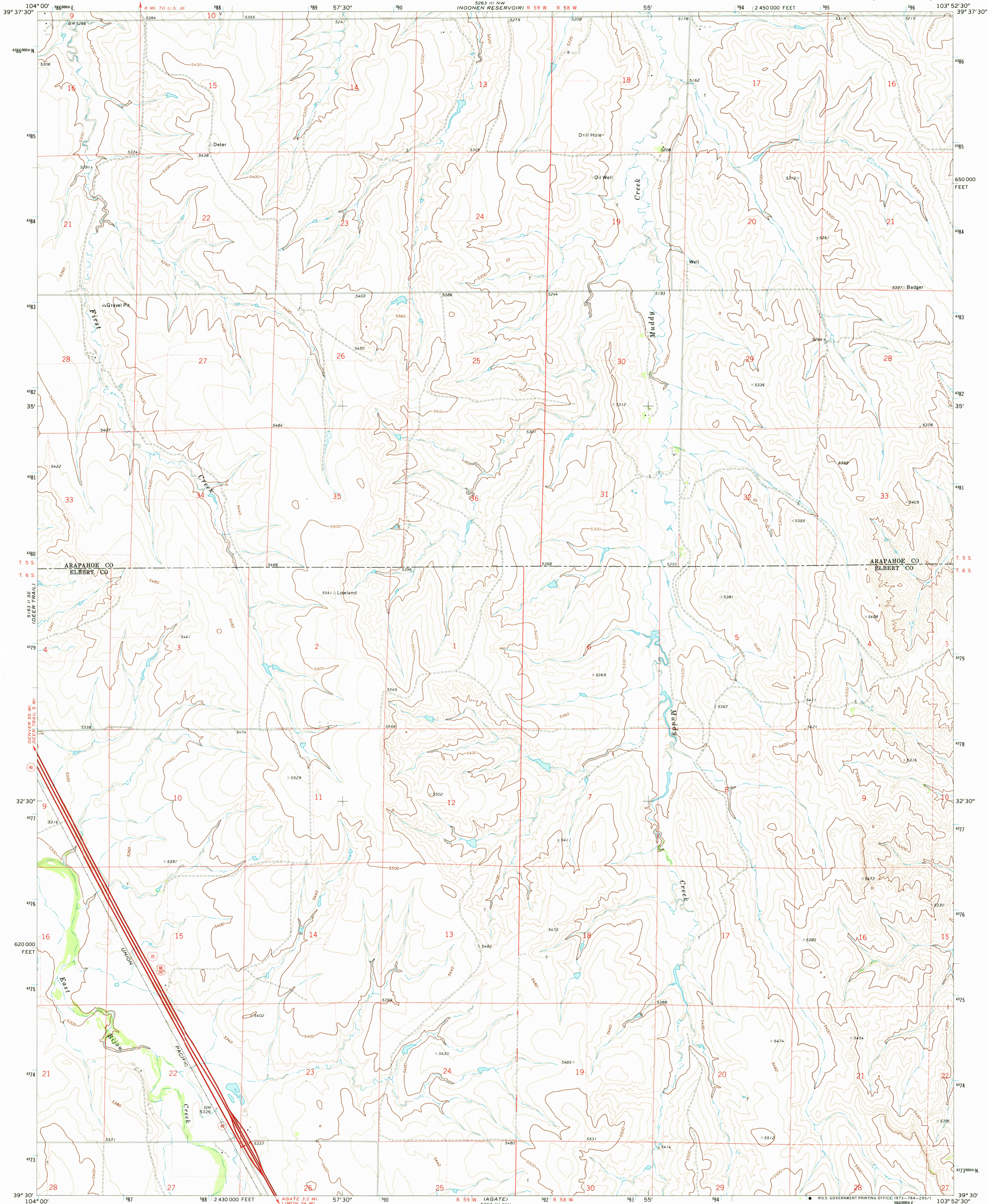


3 1/2 IN. (90.0 mm)

UNITED STATES  
DEPARTMENT OF THE INTERIOR  
GEOLOGICAL SURVEY

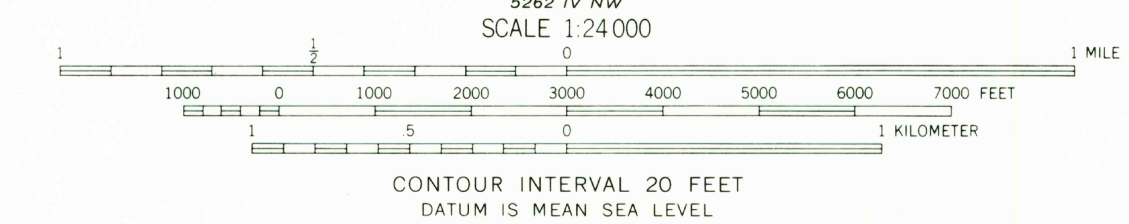
NOONEN RESERVOIR SW QUADRANGLE  
COLORADO  
7.5 MINUTE SERIES (TOPOGRAPHIC)



Mapped, edited, and published by the Geological Survey

Control by USGS and USC&GS  
Topography by photogrammetric methods from aerial photographs taken 1968. Field checked 1969  
Polyconic projection. 1927 North American datum  
10,000-foot grid based on Colorado coordinate system, central zone  
1000-meter Universal Transverse Mercator grid ticks, zone 13, shown in blue  
Fine red dashed lines indicate selected fence lines

UTM GRID AND 1969 MAGNETIC NORTH DECLINATION AT CENTER OF SHEET  
0° 41' 12" M  
12° 14' 22" M



ROAD CLASSIFICATION  
Primary highway, hard surface  
Secondary highway, hard surface  
Unimproved road  
Light-duty road, hard or improved surface  
Interstate Route  
U.S. Route  
State Route

NOONEN RESERVOIR SW, COLO.  
N3930-W10352.5/7.5

1969

AMS 5263 III SW-SERIES V877

THIS MAP COMPLIES WITH NATIONAL MAP ACCURACY STANDARDS  
FOR SALE BY U.S. GEOLOGICAL SURVEY, DENVER, COLORADO 80225, OR WASHINGTON, D.C. 20242  
A FOLDER DESCRIBING TOPOGRAPHIC MAPS AND SYMBOLS IS AVAILABLE ON REQUEST

USGS  
HISTORICAL FILE  
TOPOGRAPHIC DIVISION

1973  
3500  
50 plane