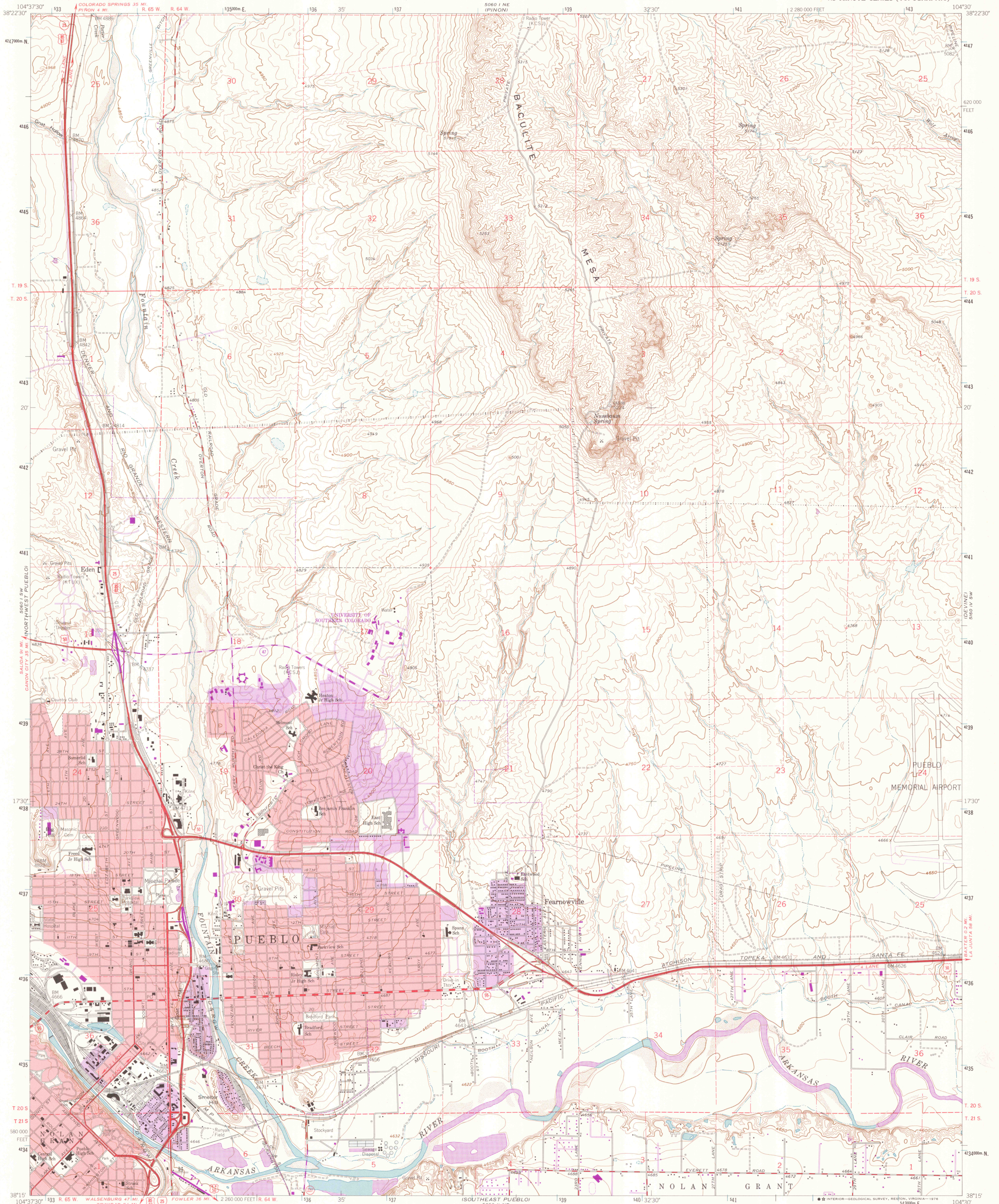


UNITED STATES  
DEPARTMENT OF THE INTERIOR  
GEOLOGICAL SURVEY

NORTHEAST PUEBLO QUADRANGLE  
COLORADO—PUEBLO CO.  
7.5 MINUTE SERIES (TOPOGRAPHIC)



Maped, edited, and published by the Geological Survey

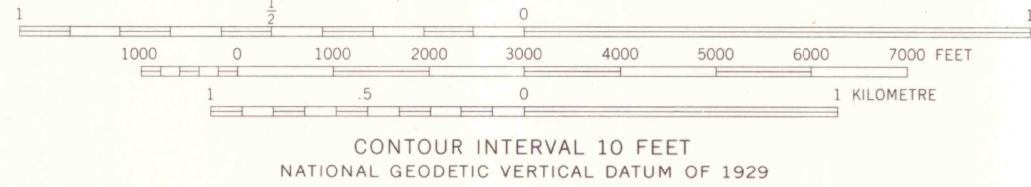
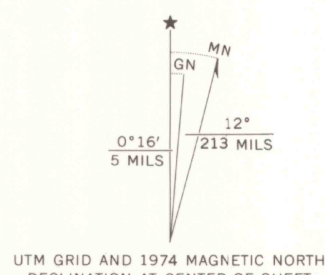
Control by USGS and NOS/NOAA

Topography by photogrammetric methods from aerial photographs taken 1954 and 1957. Field checked 1961

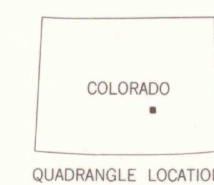
Polyconic projection. 1927 North American datum  
10,000-foot grid based on Colorado coordinate system, south zone  
1000-metre Universal Transverse Mercator grid ticks,  
zone 13, shown in blue

Red tint indicates areas in which only landmark buildings are shown  
Fine red dashed lines indicate selected fence and field lines where  
generally visible on aerial photographs. This information is unchecked

Revisions shown in purple compiled from aerial photographs  
taken 1970 and 1974. This information not field checked  
Purple tint indicates extension of urban areas



THIS MAP COMPLIES WITH NATIONAL MAP ACCURACY STANDARDS  
FOR SALE BY U. S. GEOLOGICAL SURVEY, DENVER, COLORADO 80225, OR RESTON, VIRGINIA 22092  
A FOLDER DESCRIBING TOPOGRAPHIC MAPS AND SYMBOLS IS AVAILABLE ON REQUEST



ROAD CLASSIFICATION	
Primary highway, hard surface	Light-duty road, hard or improved surface
Secondary highway, hard surface	Unimproved road
Interstate Route	U. S. Route
	State Route

NORTHEAST PUEBLO, COLO.  
N3815-W10430/7.5

1961  
PHOTOREVISED 1970 AND 1974  
AMS 5060 1 SE—SERIES V877

NOV 2 2005

ARTHEUR  
COLORADO SOURCE OF MAPS

G 3700  
224  
64  
120 ROOM