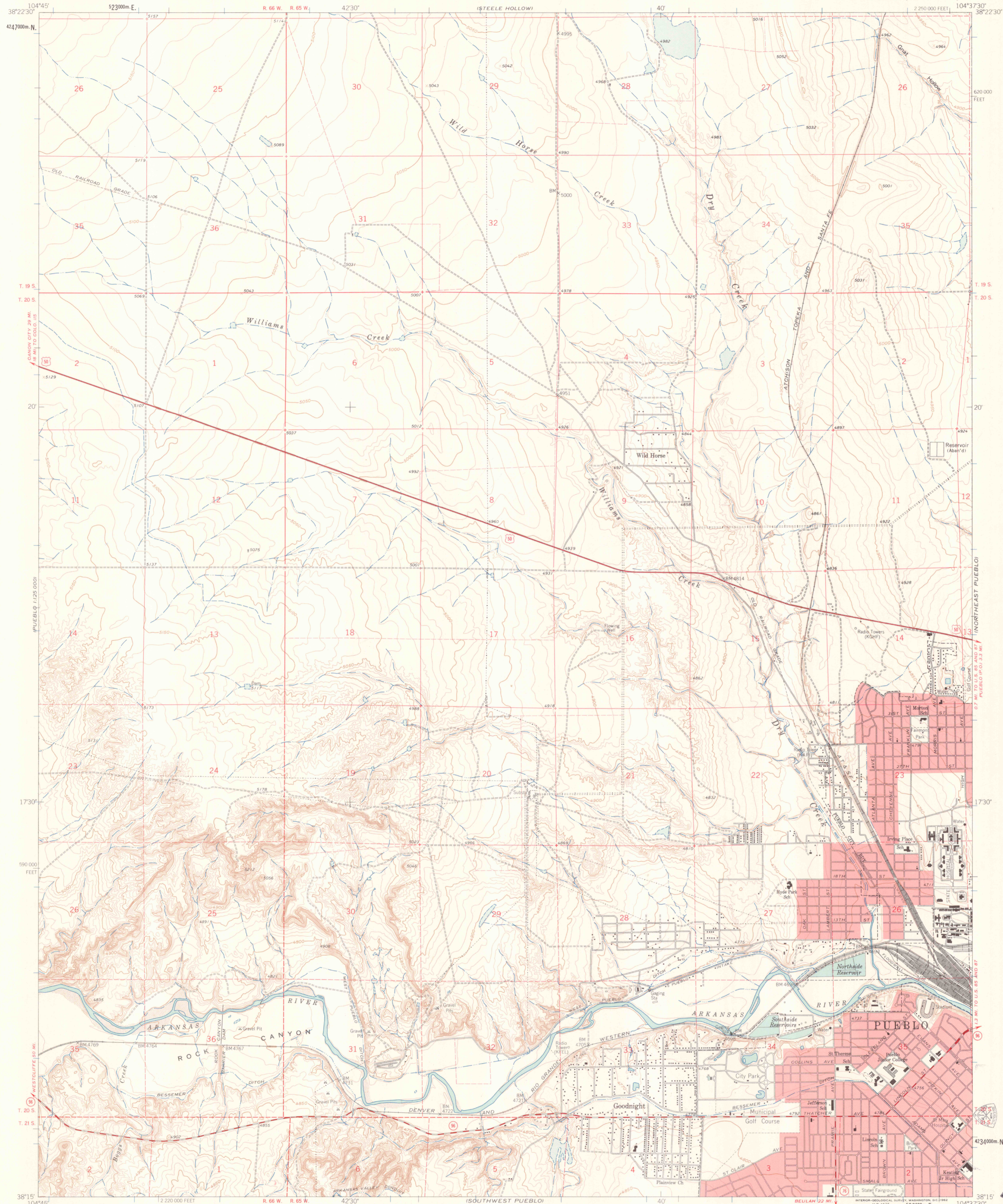


PUEBLO  
1:250,000

UNITED STATES  
DEPARTMENT OF THE INTERIOR  
GEOLOGICAL SURVEY

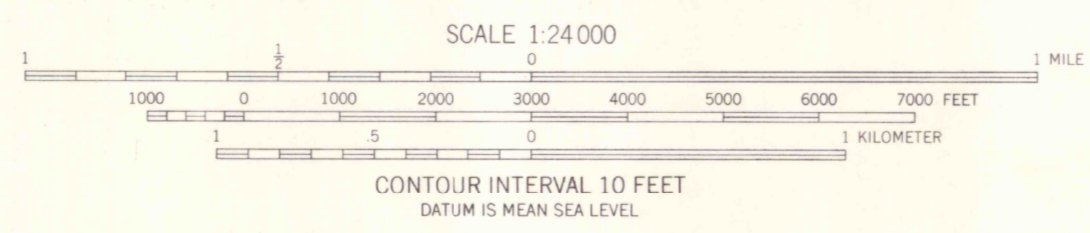
NORTHWEST PUEBLO QUADRANGLE  
COLORADO-PUEBLO CO.  
7.5 MINUTE SERIES (TOPOGRAPHIC)

IPN001



Mapped, edited, and published by the Geological Survey  
Control by USGS and USC&GS  
Topography by photogrammetric methods from aerial  
photographs taken 1957. Field checked 1961.  
Polyconic projection. 1927 North American datum  
10,000-foot grid based on Colorado coordinate system,  
south zone  
1000-meter Universal Transverse Mercator grid ticks,  
zone 13, shown in blue  
Red tint indicates areas in which only landmark buildings are shown  
Fine red dashed lines indicate selected fence and field lines where  
generally visible on aerial photographs. This information is unchecked

TRUE NORTH  
MAGNETIC NORTH  
APPROXIMATE MEAN  
DECLINATION, 1961



THIS MAP COMPLIES WITH NATIONAL MAP ACCURACY STANDARDS  
FOR SALE BY U.S. GEOLOGICAL SURVEY, DENVER 25, COLORADO OR WASHINGTON 25, D.C.  
A FOLDER DESCRIBING TOPOGRAPHIC MAPS AND SYMBOLS IS AVAILABLE ON REQUEST

COLORADO  
QUADRANGLE LOCATION

ROAD CLASSIFICATION  
Heavy-duty ——— Light-duty ———  
Medium-duty ——— Unimproved dirt ———  
U.S. Route ——— State Route ———

NORTHWEST PUEBLO, COLO.  
N3815-W10437 5/7 5

1961

OFFICE COPY  
3401  
C222  
S24  
US  
COLORADO SCHOOL OF MINES LIBRARY  
018800 3163255

AUG 20 1997

MAP ROOM  
ARTHUR LAKES LIBRARY  
COLORADO SCHOOL OF MINES

LIBRARY USE ONLY