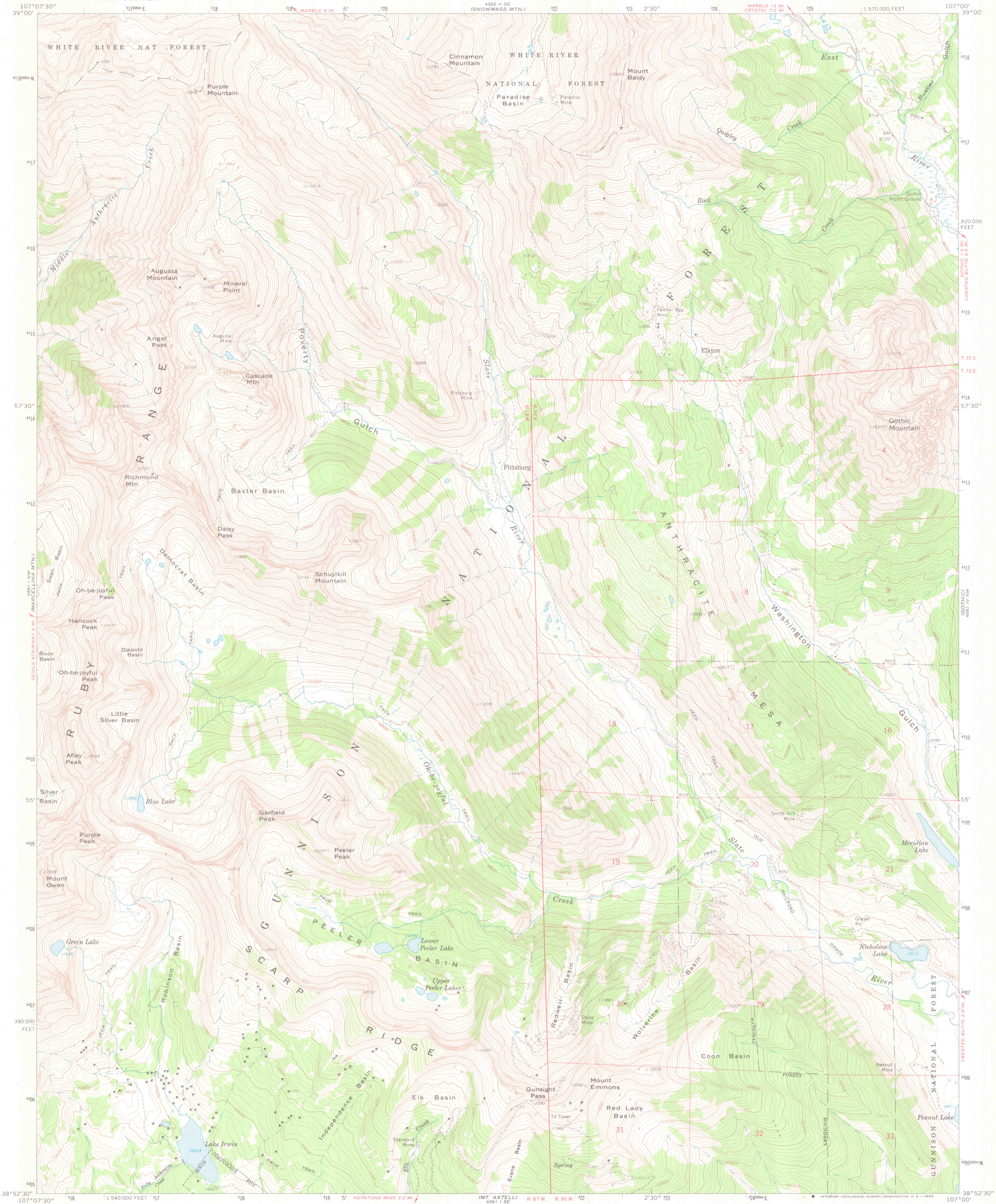


UNITED STATES
DEPARTMENT OF THE INTERIOR
GEOLOGICAL SURVEY

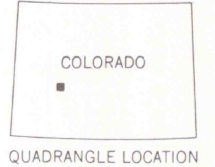
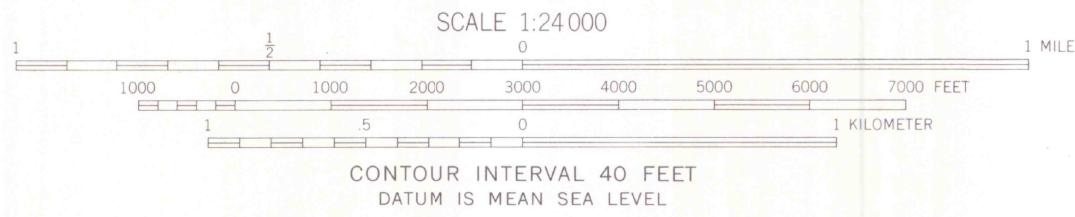
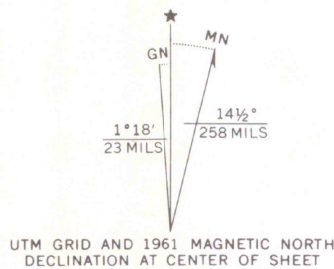
OH-BE-JOYFUL QUADRANGLE
COLORADO—GUNNISON CO.
7.5 MINUTE SERIES (TOPOGRAPHIC)
NE/4 ANTHRACITE 15' QUADRANGLE



Mapped, edited, and published by the Geological Survey
Control by USGS and USC&GS

Topography by photogrammetric methods from aerial
photographs taken 1958. Field checked 1961
Polyconic projection. 1927 North American datum
10,000-foot grid based on Colorado coordinate system, central zone
1000-meter Universal Transverse Mercator grid ticks,
zone 13, shown in blue

Where omitted, land lines have not been established
or are not shown because of insufficient data



ROAD CLASSIFICATION
Light-duty ————— Unimproved dirt —————



OH-BE-JOYFUL, COLO.
NE/4 ANTHRACITE 15' QUADRANGLE
N3852.5—W10700/7.5

1961

AMS 4561 I NE—SERIES V877

MAR 2 1 2005

U.S. GEOLOGICAL SURVEY
ANTHRAKITE QUADRANGLE
COLORADO GEOLOGICAL SURVEY

Q 3700

824

.G4

MAP ROOM