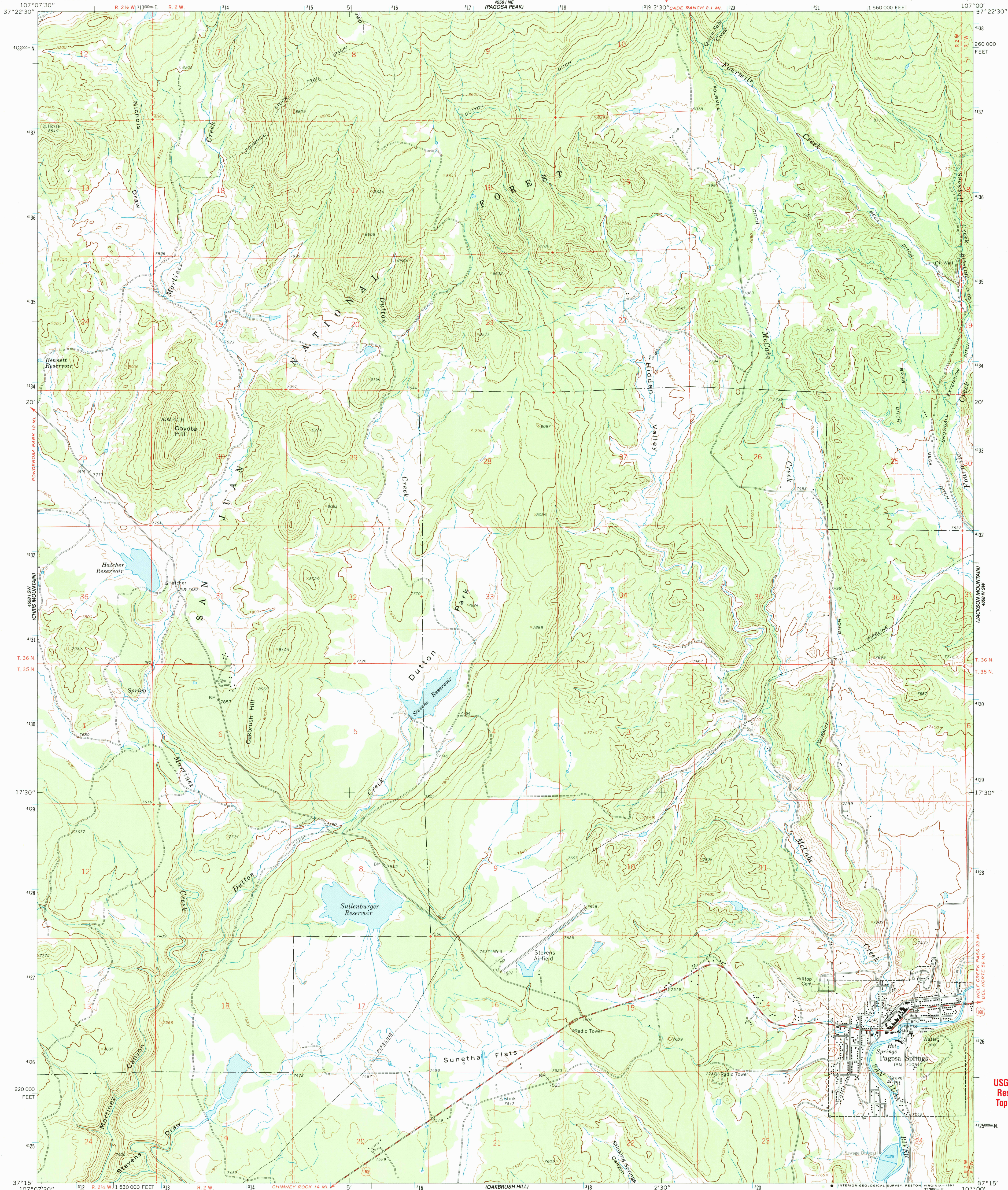


UNITED STATES  
DEPARTMENT OF THE INTERIOR  
GEOLOGICAL SURVEY

PAGOSA SPRINGS QUADRANGLE  
COLORADO—ARCHULETA CO.  
7.5 MINUTE SERIES (TOPOGRAPHIC)



Mapped by the U. S. Forest Service  
Edited and published by the Geological Survey  
Control by USGS, NOS/NOAA, and USFS  
Topography by photogrammetric methods from aerial  
photographs taken 1950 and 1960. Field checked by USGS 1964  
Polyconic projection. 1927 North American Datum  
10,000-foot grid based on Colorado coordinate system  
south zone  
1000-meter Universal Transverse Mercator grid ticks, zone 13  
shown in blue  
To place on the predicted North American Datum 1983  
move the projection lines 2 meters north and 53 meters  
east as shown by dashed corner ticks  
There maybe private inholdings within the boundaries of the  
National or State reservations shown on this map  
Fine red dashed lines indicate selected fence lines

UTM GRID AND 1964 MAGNETIC NORTH  
DECLINATION AT CENTER OF SHEET  
Certain land lines are omitted because of insufficient data

SCALE 1:24,000  
CONTOUR INTERVAL 40 FEET  
NATIONAL GEODETIC VERTICAL DATUM OF 1929

FOR SALE BY U. S. GEOLOGICAL SURVEY, DENVER, COLORADO 80225, OR RESTON, VIRGINIA 22092  
A FOLDER DESCRIBING TOPOGRAPHIC MAPS AND SYMBOLS IS AVAILABLE ON REQUEST

ROAD CLASSIFICATION  
Medium-duty ——— Light-duty ———  
Unimproved dirt - - - - -  
U. S. Route

COLORADO  
QUADRANGLE LOCATION

USGS NMD HISTORICAL MAP  
JAN 16 1991  
REC'D FILE COPY

PAGOSA SPRINGS, COLO.  
37107-C1-TF-024

1964  
DMA 4558 I SE-SERIES V877

USGS Library  
Reston, VA.  
Topo Archive