

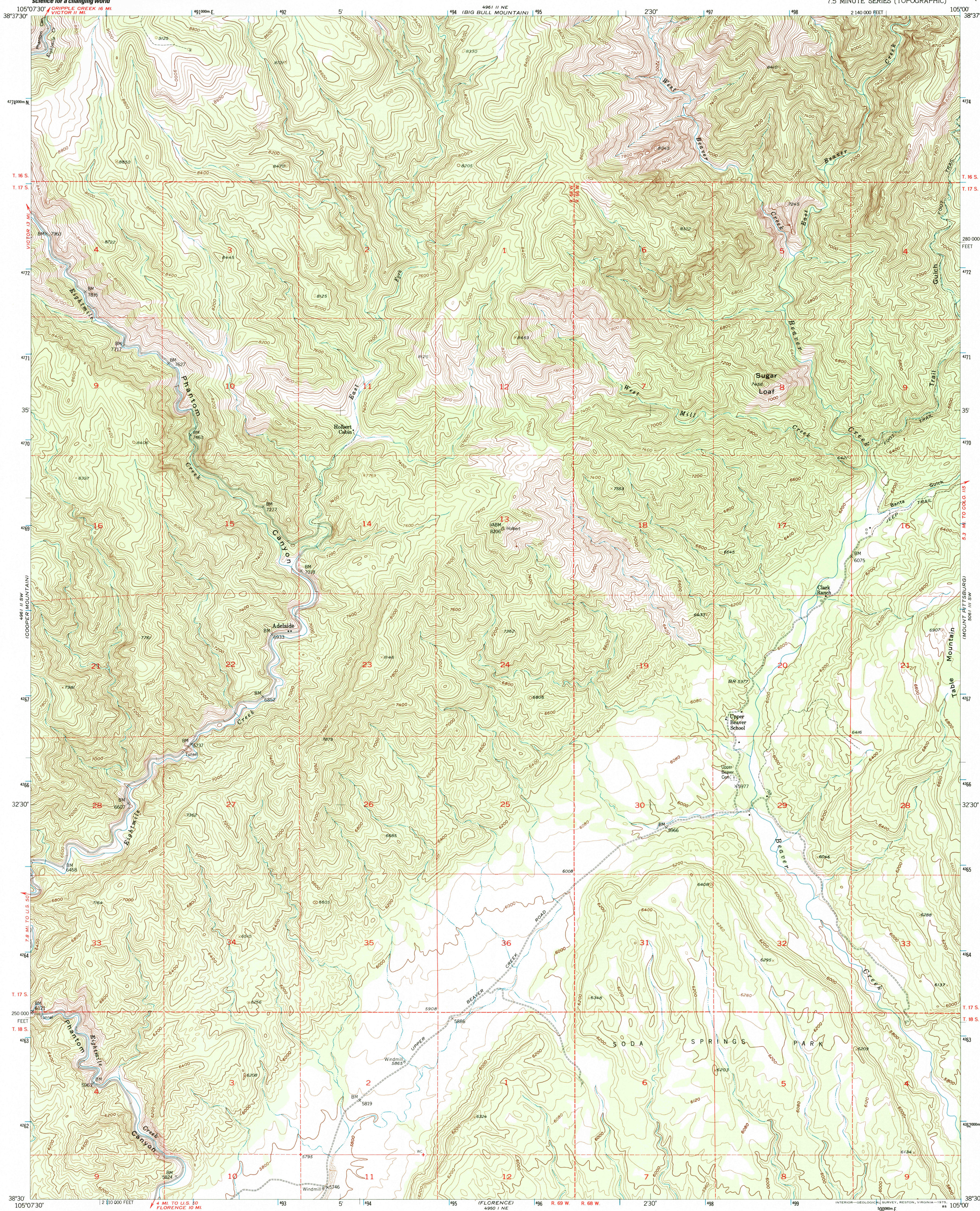
CRIPPLE CREEK
SOUTH



U.S. DEPARTMENT OF THE INTERIOR
U.S. GEOLOGICAL SURVEY

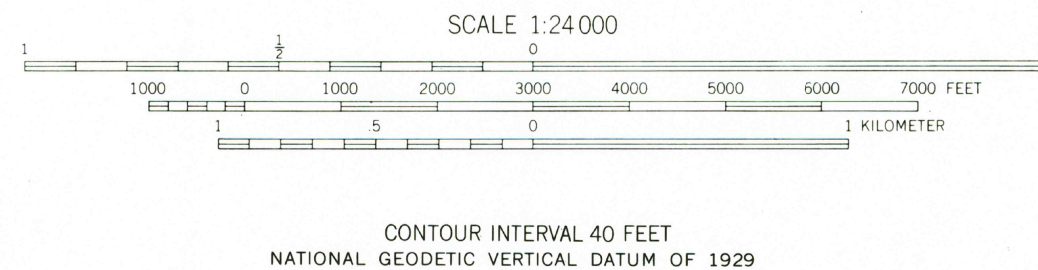
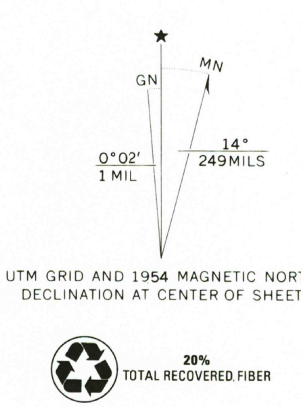
PHANTOM CANYON QUADRANGLE
COLORADO-FREMONT CO.
7.5 MINUTE SERIES (TOPOGRAPHIC)

581 II NW
(MOUNT BIG CHIEF)



CRIPPLE CREEK
SOUTH

Mapped, edited, and published by the Geological Survey
Control by USGS and USC&GS
Topography from aerial photographs by multiplex methods
Aerial photographs taken 1953. Field check 1954
Polyconic projection, 1927 North American datum
10,000-foot grid based on Colorado coordinate system,
central zone
Dashed land lines indicate approximate locations
Land lines in T. 16 S.-R. 68 W. and T. 16 S.-R. 69 W.
are omitted because of insufficient data
Unchecked elevations are shown in brown
1000-meter Universal Transverse Mercator grid ticks,
zone 13, shown in blue



ROAD CLASSIFICATION
Heavy-duty ——— Light-duty ———
Medium-duty ——— Unimproved dirt ———
U. S. Route ——— State Route ———

PHANTOM CANYON, COLO.
N3830-W10500/7.5
1954

AMS 4951 II SE-SERIES V877

RECEIVED
SEP 30 2000
USGS NAD
HISTORICAL MAP ARCHIVES
ISBN 0-607-12558-8
9 780607 125587