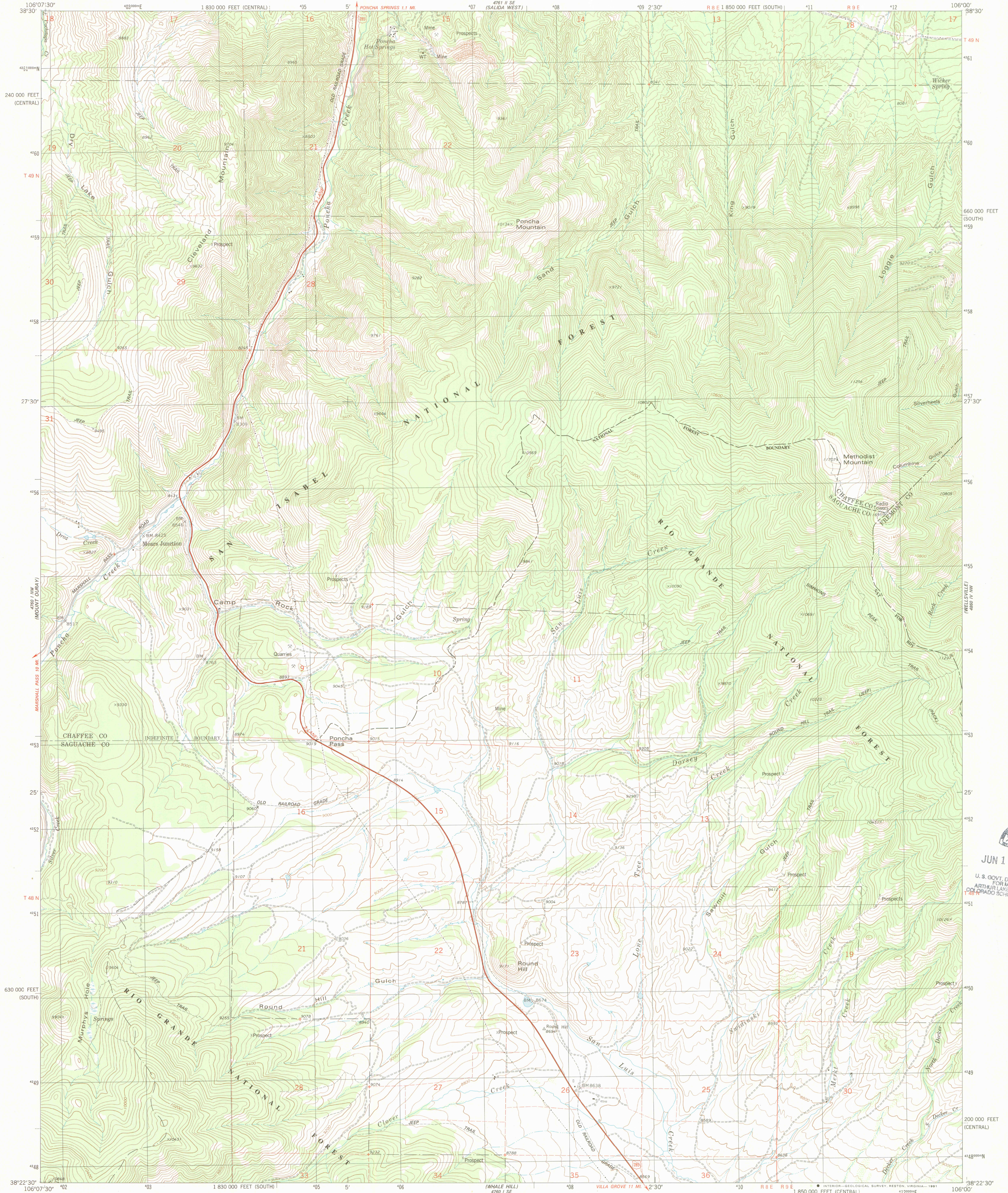


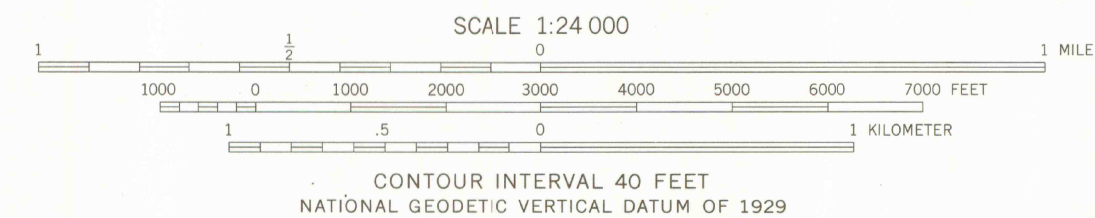
UNITED STATES
DEPARTMENT OF THE INTERIOR
GEOLOGICAL SURVEY

PONCHA PASS QUADRANGLE
COLORADO
7.5 MINUTE SERIES (TOPOGRAPHIC)
NE 4 BONANZA 15' QUADRANGLE



Mapped, edited, and published by the Geological Survey
Control by USGS and NOS/NOAA
Topography by photogrammetric methods from aerial photographs
taken 1975. Field checked 1976. Map edited 1980
Projection: Colorado coordinate system, south zone
(Lambert conformal conic)
10,000-foot grid ticks based on Colorado coordinate
system, south and central zones
1000-meter Universal Transverse Mercator grid, zone 13
1927 North American Datum
To place on the predicted North American Datum 1983
move the projection lines 4 meters north and
50 meters east as shown by dashed corner ticks
Fine red dashed lines indicate selected fence lines
Certain land lines are omitted because of insufficient data

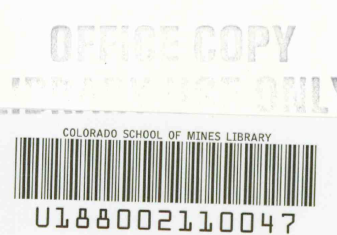
There may be private inholdings within the boundaries
of the National or State reservations shown on this map



THIS MAP COMPLIES WITH NATIONAL MAP ACCURACY STANDARDS
FOR SALE BY U.S. GEOLOGICAL SURVEY, DENVER, COLORADO 80225, OR RESTON, VIRGINIA 22092
A FOLDER DESCRIBING TOPOGRAPHIC MAPS AND SYMBOLS IS AVAILABLE ON REQUEST



ROAD CLASSIFICATION
Primary highway, hard surface ———— Improved surface ————
Secondary highway, hard surface ———— Unimproved road ————
Interstate Route U.S. Route State Route



PONCHA PASS, COLO.
38106-D1-TF-024
1980
DMA 4760 I NE-SERIES V877

JUN 11 1992
U.S. GOVT. DEPOSITORY
FOR MAPS
ARTHUR L. LANKS LIBRARY
1380 ARCADE SCHOOL OF MINES

3700
201.64
MAP ROOM
Poncha Pass