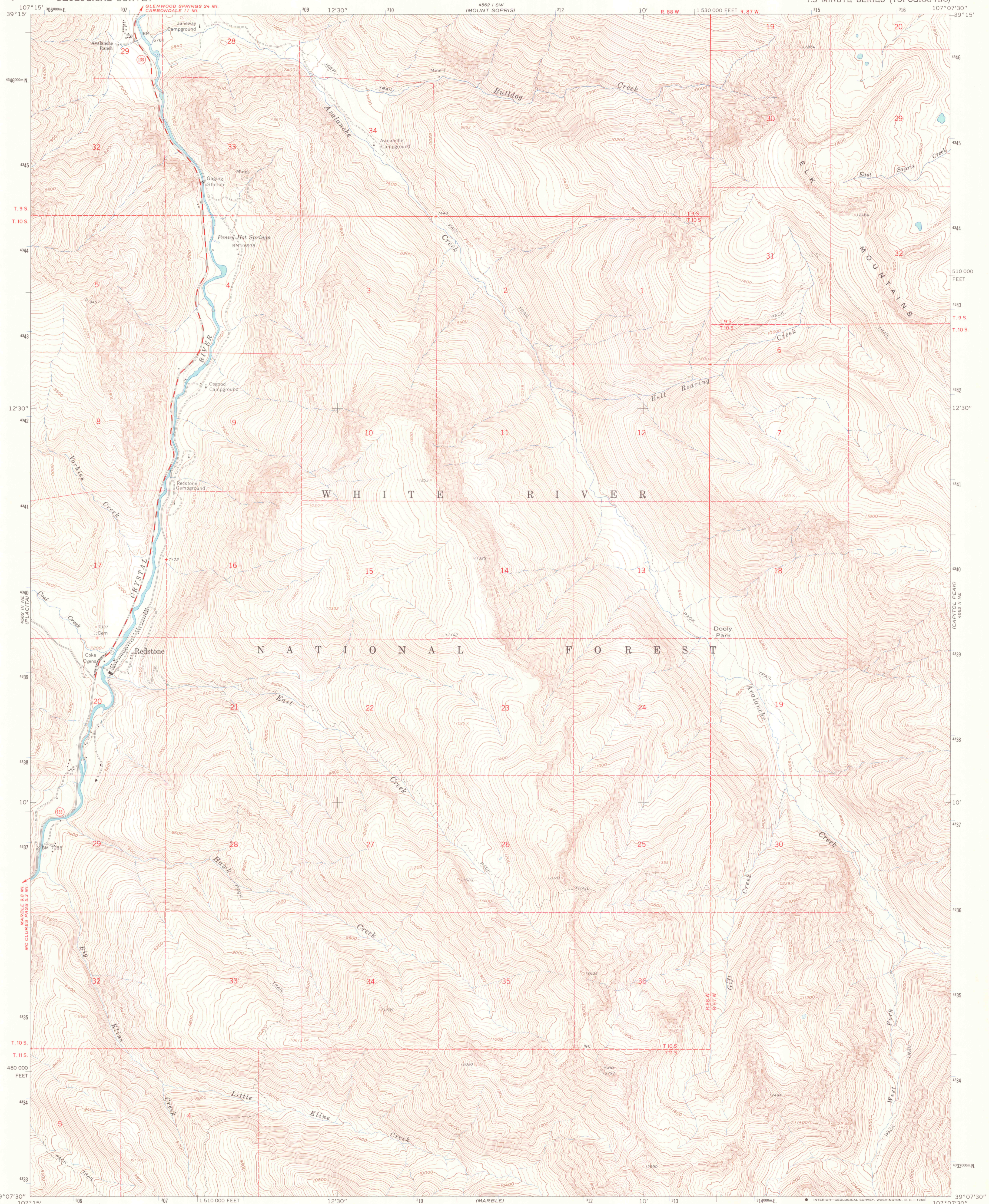


UNITED STATES
DEPARTMENT OF THE INTERIOR
GEOLOGICAL SURVEY

REDSTONE QUADRANGLE
COLORADO-PITKIN CO.
7.5 MINUTE SERIES (TOPOGRAPHIC)



Maped, edited, and published by the Geological Survey

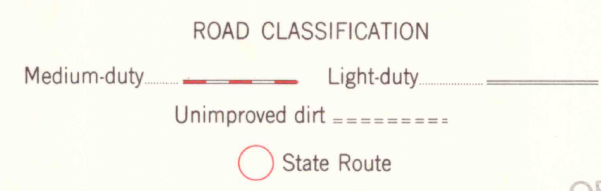
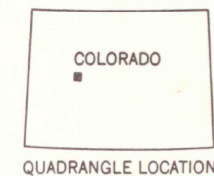
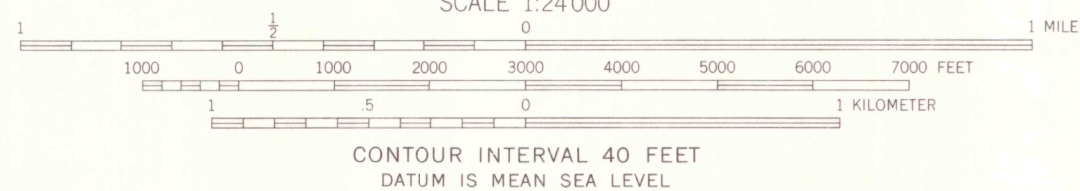
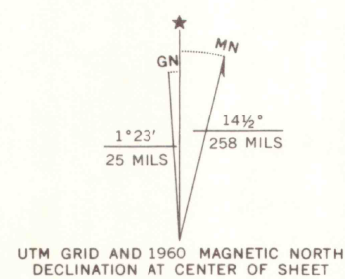
Control by USGS and USC&GS

Topography by photogrammetric methods from aerial

photographs taken 1958. Field checked 1960

Polyconic projection. 1927 North American datum
10,000-foot grid based on Colorado coordinate system, central zone
1000-meter Universal Transverse Mercator grid ticks,
zone 13, shown in blue

Where omitted, land lines have not been established
or have been suspended



THIS MAP COMPLIES WITH NATIONAL MAP ACCURACY STANDARDS
FOR SALE BY U.S. GEOLOGICAL SURVEY, DENVER, COLORADO 80225, OR WASHINGTON, D.C. 20242
A FOLDER DESCRIBING TOPOGRAPHIC MAPS AND SYMBOLS IS AVAILABLE ON REQUEST

REDSTONE, COLO.
N3907.5-W10707.5/7.5

1960
AMS 4562 II NW - SERIES V877

OFFICE COPY

G 3701
C222
S24
US