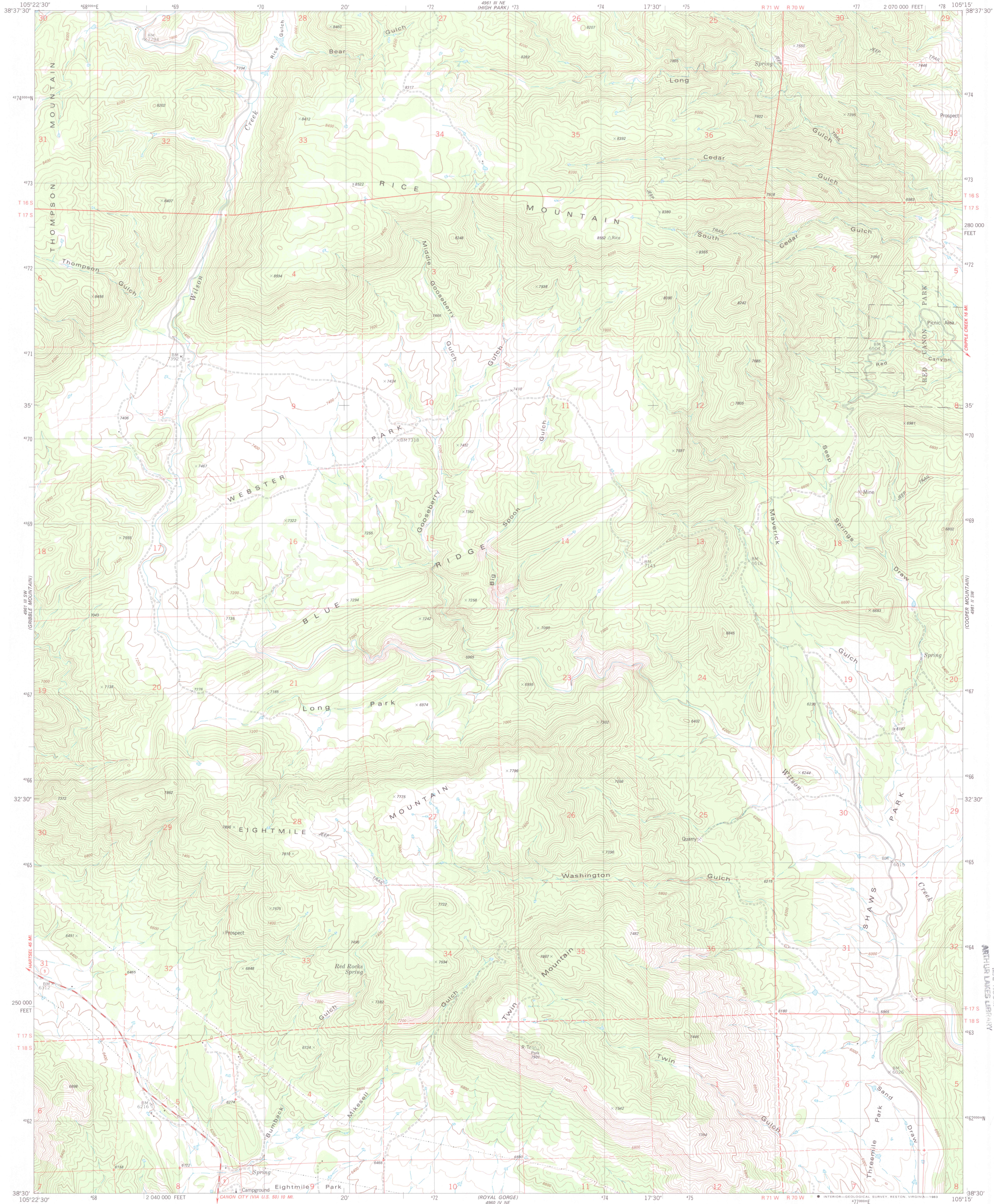
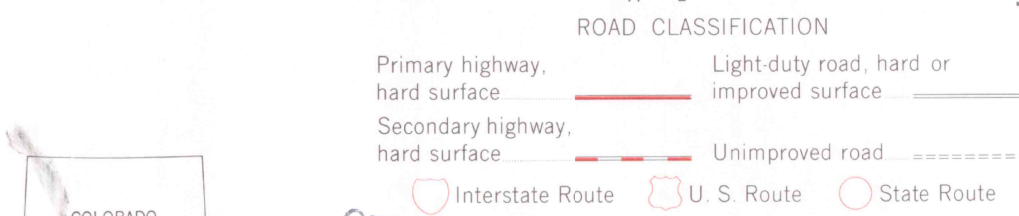
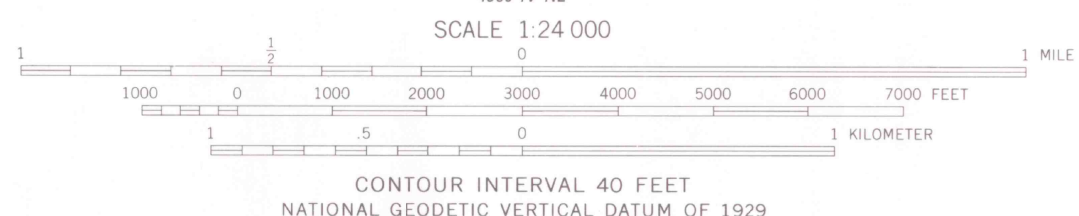
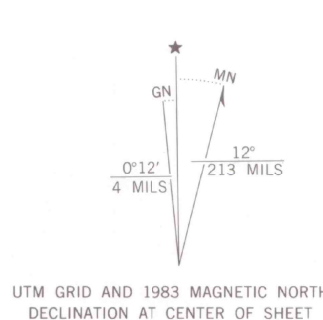


UNITED STATES
DEPARTMENT OF THE INTERIOR
GEOLOGICAL SURVEY

RICE MOUNTAIN QUADRANGLE
COLORADO—FREMONT CO.
7.5 MINUTE SERIES (TOPOGRAPHIC)
SE 1/4 COVER MOUNTAIN 15' QUADRANGLE



Mapped, edited, and published by the Geological Survey
Control by USGS and NOS/NOAA
Topography by photogrammetric methods from aerial photographs
taken 1975. Field checked 1976. Map edited 1983
Projection and 10,000-foot grid ticks: Colorado
coordinate system, central zone (Lambert conformal conic)
1000-meter Universal Transverse Mercator grid, zone 13
1927 North American datum
To place on the predicted North American Datum 1983
move the projection lines 4 meters north and
49 meters east as shown by dashed corner ticks
Fine red dashed lines indicate selected fence lines



OFFICE COPY

RICE MOUNTAIN, COLO.
SE 1/4 COVER MOUNTAIN 15' QUADRANGLE
N3830-W10515/7.5

1983

DMA 4961 III SE-SERIES V877

AUG 15 1984
MAP ROOM
NATIONAL LIBRARY OF CONGRESS

C222
s24

LIBRARY USE ONLY