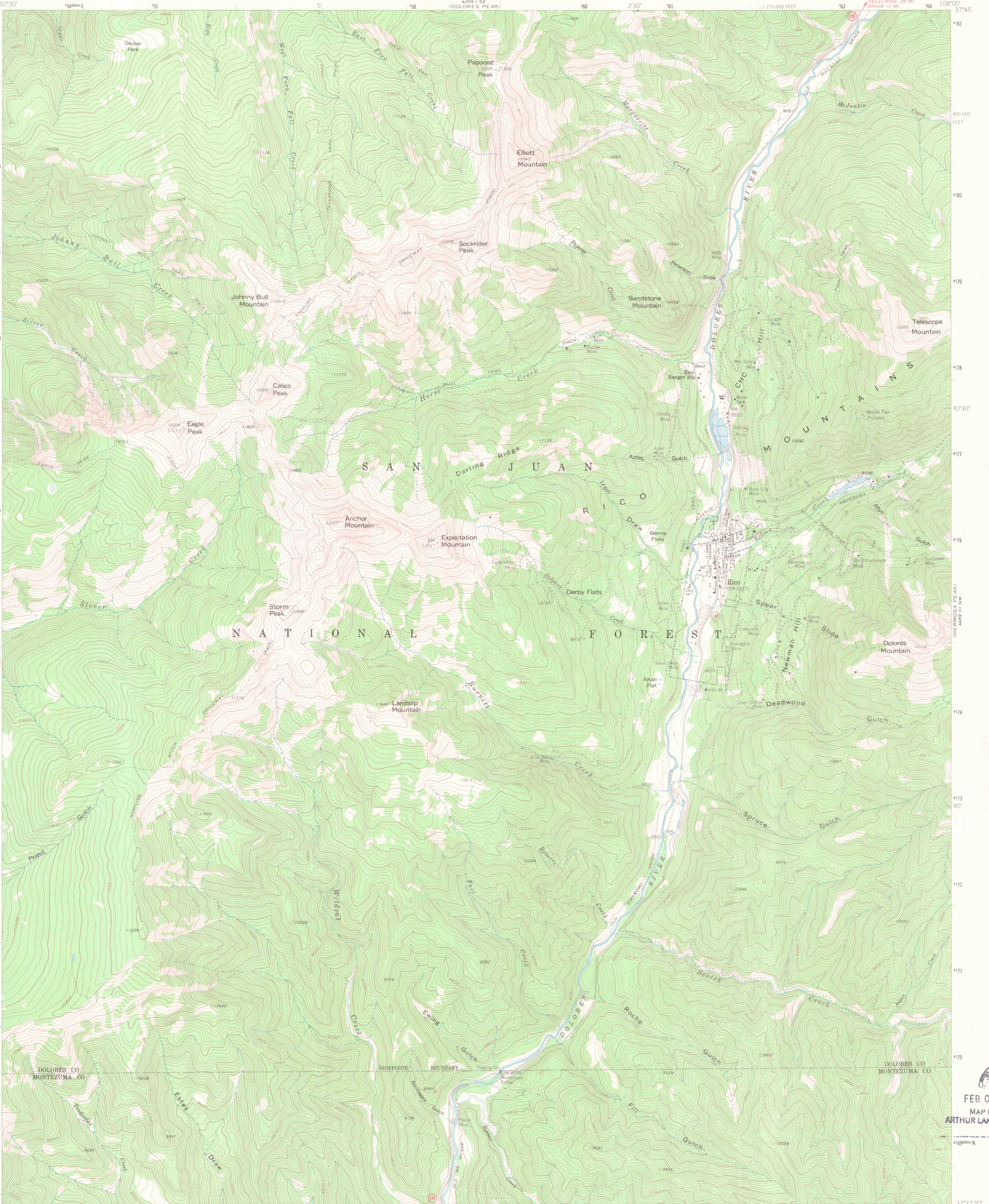
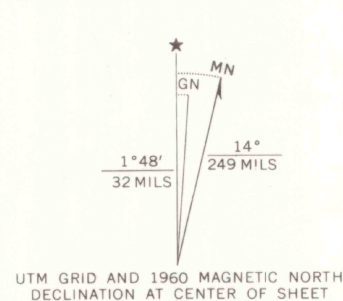


UNITED STATES
DEPARTMENT OF THE INTERIOR
GEOLOGICAL SURVEY

RICO QUADRANGLE
COLORADO
7.5 MINUTE SERIES (TOPOGRAPHIC)
NE/4 RICO 15 QUADRANGLE
TELLURIDE 25 MI.
SIPWIR 12 MI.



Mapped, edited, and published by the Geological Survey
Control by USGS and USC&GS
Topography by photogrammetric methods from aerial
photographs taken 1956. Field checked 1960
Polyconic projection. 1927 North American datum
10,000-foot grid based on Colorado coordinate system,
south zone
1000 meter Universal Transverse Mercator grid ticks,
zone 12, shown in blue
Land lines omitted because of insufficient data
All recovered corners are shown



THIS MAP COMPLIES WITH NATIONAL MAP ACCURACY STANDARDS
FOR SALE BY U.S. GEOLOGICAL SURVEY, DENVER, COLORADO 80225, OR WASHINGTON, D. C. 20242
A FOLDER DESCRIBING TOPOGRAPHIC MAPS AND SYMBOLS IS AVAILABLE ON REQUEST



OFFICE COPY
LIBRARY USE ONLY



ROAD CLASSIFICATION
Light-duty ————— Unimproved dirt —————
State Route

RICO, COLO.
NE/4 RICO 15 QUADRANGLE
N3737.5 - W10800/7.5

1960
AMS 4359 II NE-SERIES V877

G 3700
s24
.G4
MAP ROOM

1960
AMS 4359 II NE-SERIES V877

FEB 04 1966
MAP ROOM
ARTHUR LAKES LIBRARY