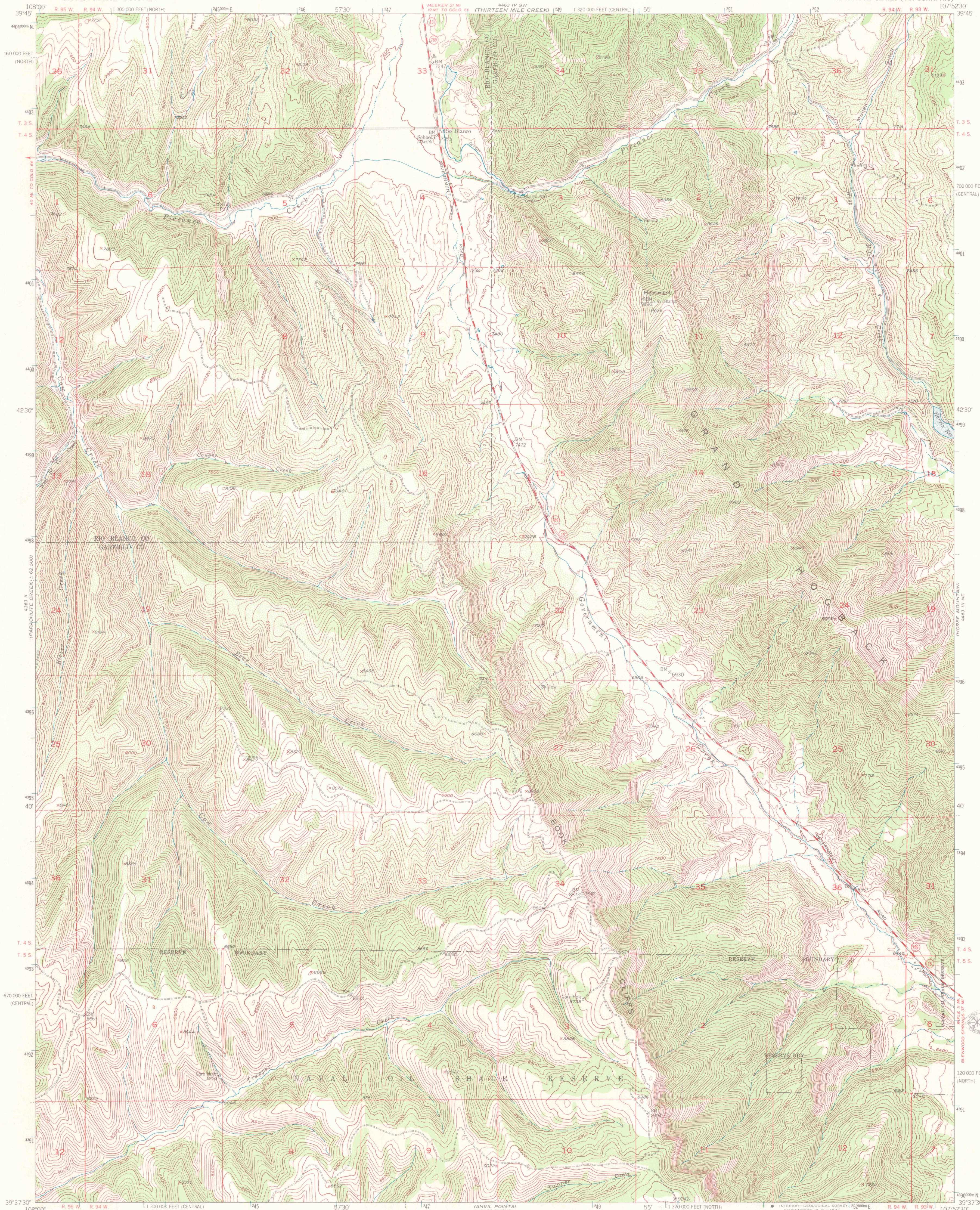


UNITED STATES  
DEPARTMENT OF THE INTERIOR  
GEOLOGICAL SURVEY

RIO BLANCO QUADRANGLE  
COLORADO  
7.5 MINUTE SERIES (TOPOGRAPHIC)



Maped, edited, and published by the Geological Survey

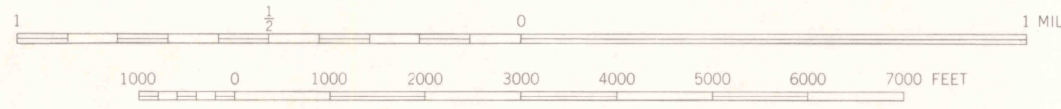
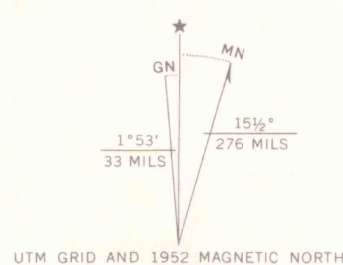
Control by USGS and USC&GS

Topography from aerial photographs by multiplex methods  
Aerial photographs taken 1948; Field check 1952

Polyconic projection, 1927 North American datum  
10,000-foot grid based on Colorado coordinate system,  
central and north zones

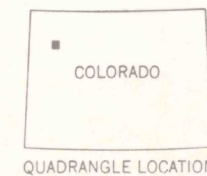
Dashed land lines indicate approximate locations  
Land lines unsurveyed in part of T.4 S., R.94 W.

1000-meter Universal Transverse Mercator grid ticks,  
zone 13, shown in blue



CONTOUR INTERVAL 40 FEET  
DATUM IS MEAN SEA LEVEL

THIS MAP COMPLIES WITH NATIONAL MAP ACCURACY STANDARDS  
FOR SALE BY U. S. GEOLOGICAL SURVEY, DENVER, COLORADO 80225, OR WASHINGTON, D. C. 20242  
A FOLDER DESCRIBING TOPOGRAPHIC MAPS AND SYMBOLS IS AVAILABLE ON REQUEST



OFFICE COPY  
LIBRARY

ROAD CLASSIFICATION  
Medium-duty ——— Light-duty ———  
Unimproved dirt ———  
State Route

RIO BLANCO, COLO.  
N3937.5-W10752.5/7.5

1952

AMS 4463 III NW-SERIES V877

JAN 03 2006

ASTHUR  
COLLEGE

G 3700  
s24  
.G4  
MAP ROOM