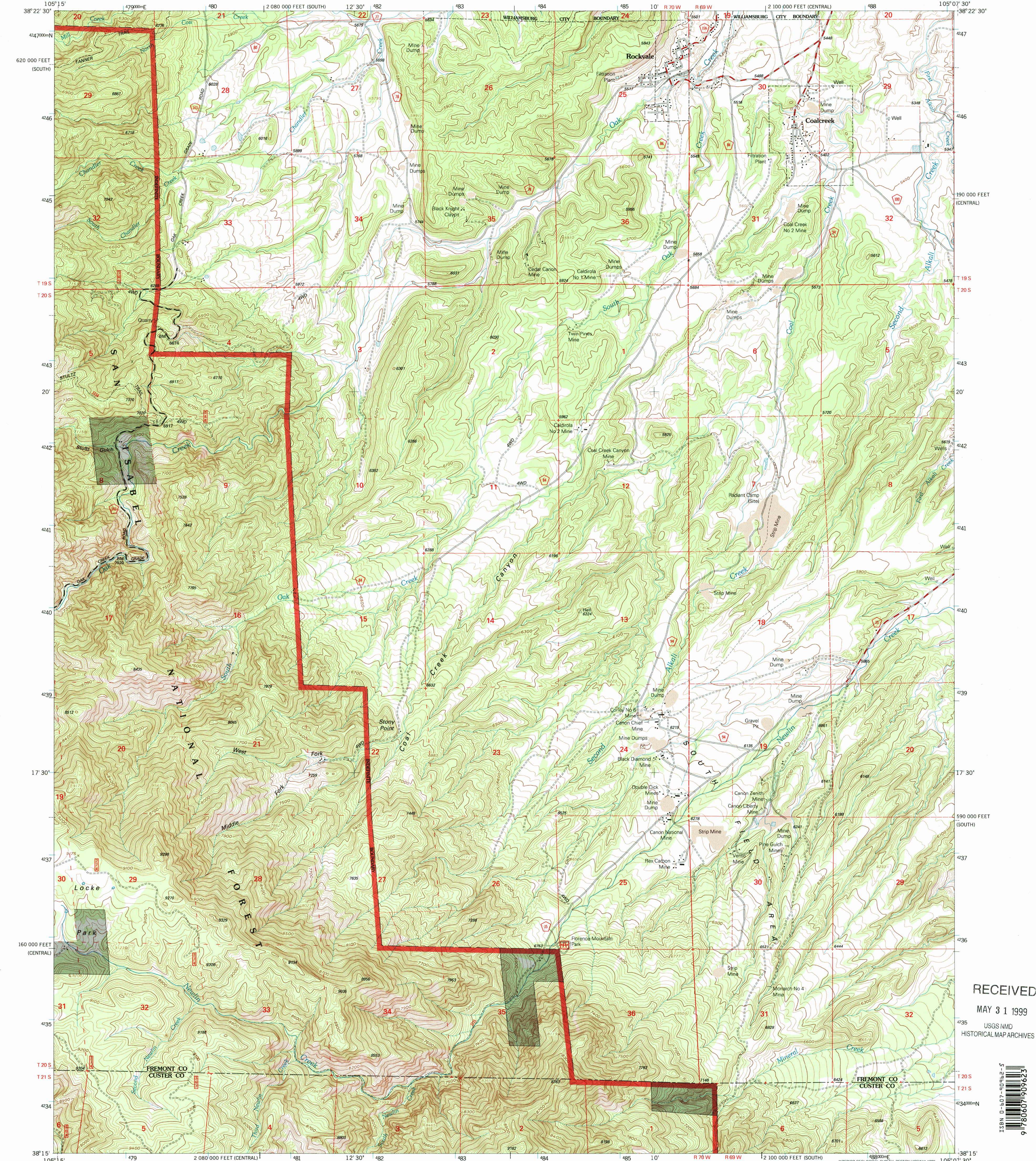


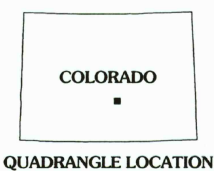
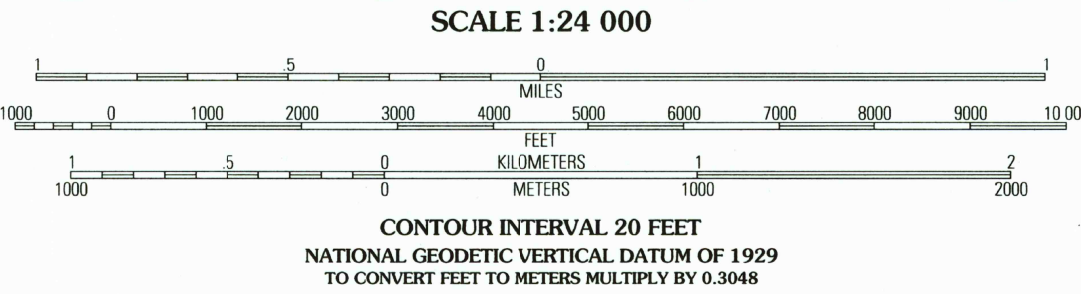
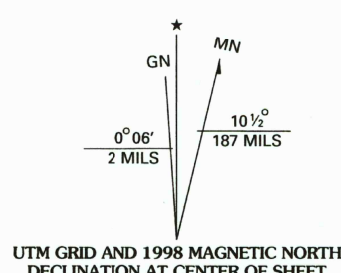
UNITED STATES
DEPARTMENT OF THE INTERIOR
GEOLOGICAL SURVEY

UNITED STATES
DEPARTMENT OF AGRICULTURE
FOREST SERVICE

ROCKVALE QUADRANGLE
COLORADO
7.5-MINUTE SERIES (TOPOGRAPHIC)



Produced by the U.S. Geological Survey
Revised by the U.S. Forest Service
Areas outside the National Forest System lands may not have been revised
Topography compiled 1954. Planimetry derived from imagery taken 1988
Public Land Survey System and survey control current as of 1996. Partial
field check by U.S. Forest Service 1994
North American Datum of 1927 (NAD 27). Projection and 10 000-foot ticks:
Colorado coordinate system, central and south zones (Lambert conformal conic)
Blue 1000-meter Universal Transverse Mercator ticks, zone 13
North American Datum of 1983 (NAD 83) is shown by dashed corner ticks
The values of the shift between NAD 27 and NAD 83 for 7.5-minute
intersections are obtainable from National Geodetic Survey NADCON software
Non-National Forest System lands within the National Forest
Inholdings may exist in other National or State reservations
This map is not a legal land line or ownership document. Public lands are
subject to change and leasing, and may have access restrictions; check
with local offices. Obtain permission before entering private lands



1	2	3	1 Royal Gorge
			2 Canon City
4		5	3 Florence
			4 Curley Peak
			5 Florence SE
6	7	8	6 Mount Tyndall
			7 Hardscrabble Mountain
			8 Wetmore

ADJOINING 7.5' QUADRANGLES

Interstate	5	Primary highway	1
Secondary highway	10	Light-duty road	2
U. S.	10	Composition: Unspecified	3
State	10	Paved	4
County	10	Gravel	5
National Forest, suitable for passenger cars	10	Dirt	6
National Forest, suitable for high clearance vehicles	10	Unimproved; 4 wheel drive	7
National Forest Trail	34	Trail	8
		Gate; Barrier	9

ROCKVALE, CO
1994
NIMA 4960 I SW - SERIES V877

RECEIVED
MAY 31 1999
USGS NMD
HISTORICAL MAP ARCHIVES

