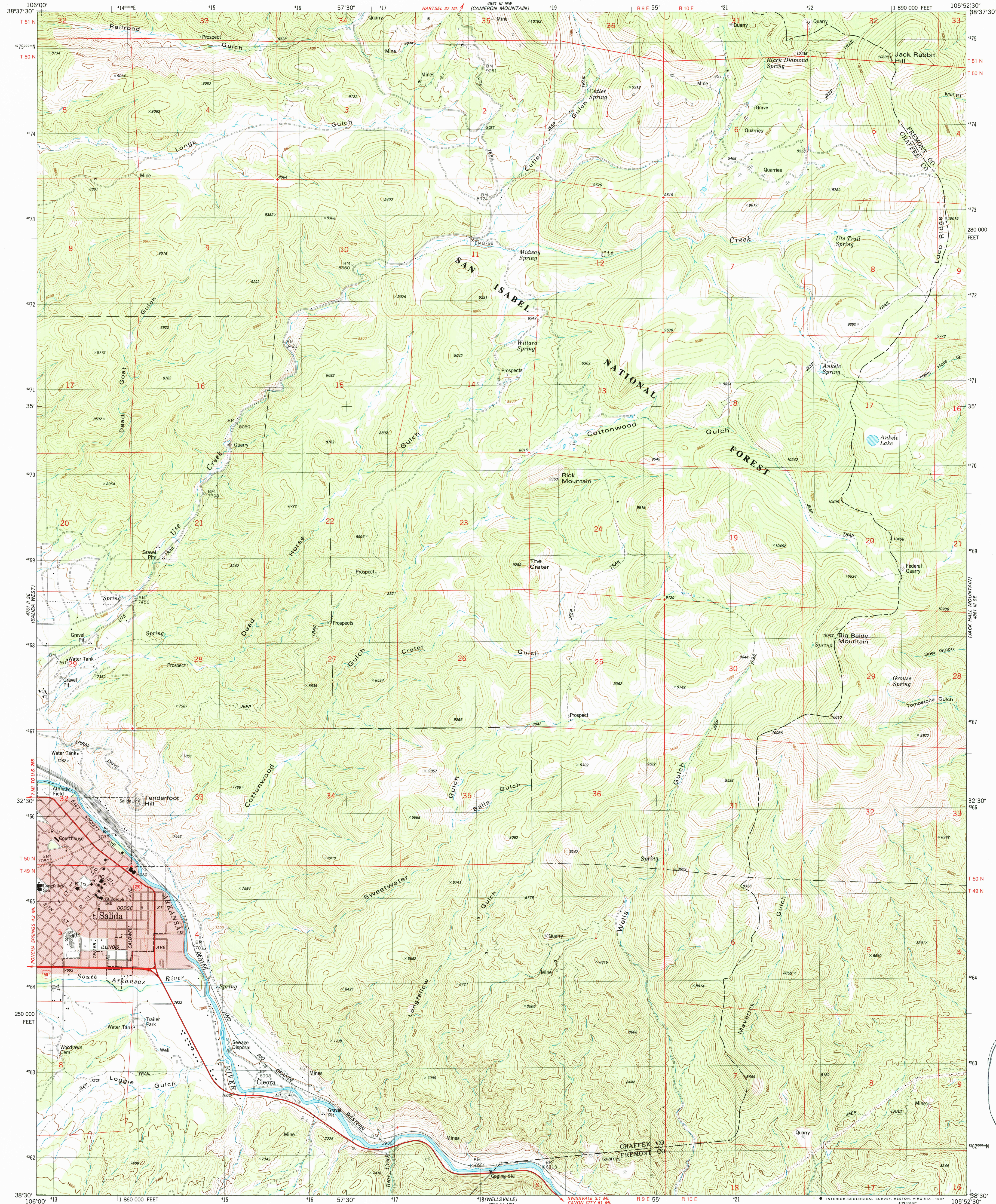


APR 1988
(NAT 1988)

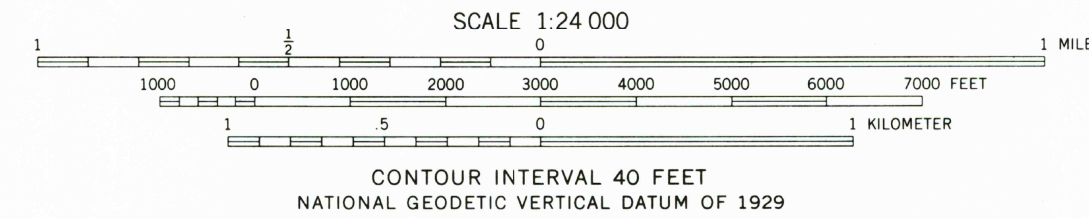
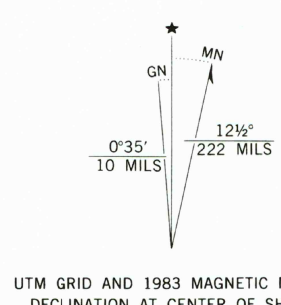
UNITED STATES
DEPARTMENT OF THE INTERIOR
GEOLOGICAL SURVEY

SALIDA EAST QUADRANGLE
COLORADO
7.5 MINUTE SERIES (TOPOGRAPHIC)
SW/4 CAMERON MOUNTAIN 15' QUADRANGLE

APR 1988
(NAT 1988)



Mapped, edited, and published by the Geological Survey
Control by USGS and NOS/NOAA
Topography by photogrammetric methods from aerial photographs
taken 1975. Field checked 1976. Map edited 1983
Projection and 10,000-foot grid ticks: Colorado
coordinate system, central zone (Lambert conformal conic)
1000-meter Universal Transverse Mercator grid, zone 13
1927 North American Datum
To place on the predicted North American Datum 1983
move the projection lines 4 meters north and
50 meters east as shown by dashed corner ticks
Certain land lines are omitted because of insufficient data
There may be private inholdings within the boundaries of
the National or State reservations shown on this map



ROAD CLASSIFICATION
Primary highway, hard surface
Secondary highway, hard surface
Light-duty road, hard or improved surface
Unimproved road
Interstate Route
U. S. Route
State Route

SALIDA EAST, COLO.
SW/4 CAMERON MOUNTAIN 15' QUADRANGLE
38105-E8-TF-024

1983

DMA 4861 III SW-SERIES V877

USGS 7.5 MINUTE TOPOGRAPHIC MAP
APR 28 1988
REC'D FILE COPY