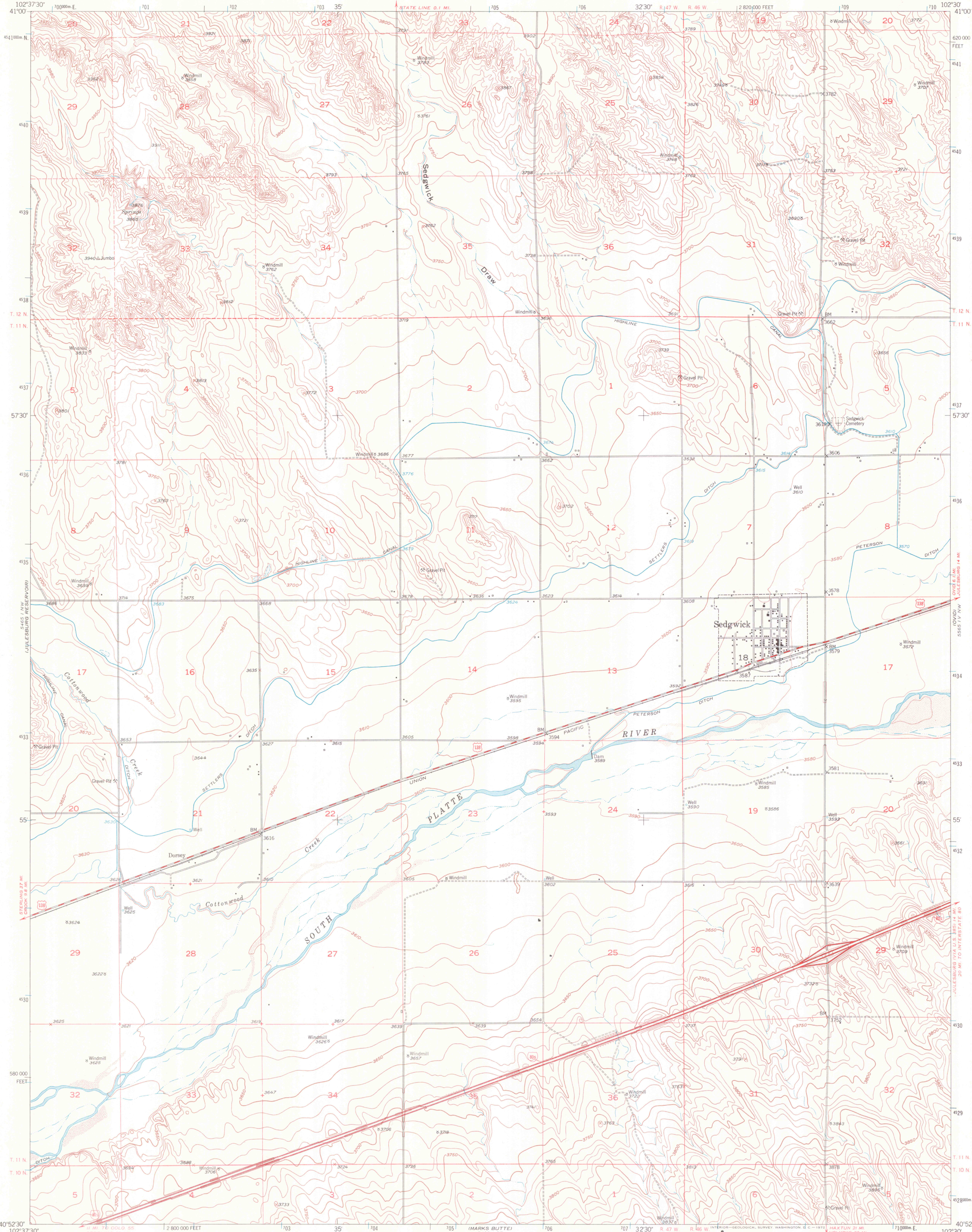


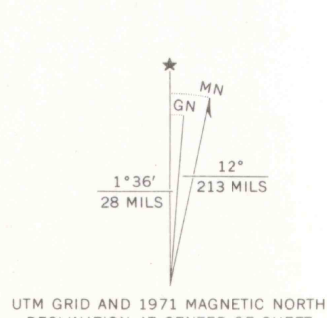
UNITED STATES
DEPARTMENT OF THE INTERIOR
GEOLOGICAL SURVEY

SEDGWICK QUADRANGLE
COLORADO-SEDGWICK CO.
7.5 MINUTE SERIES (TOPOGRAPHIC)

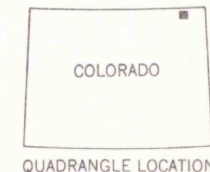
5566 1/4 SW
10TH PELL



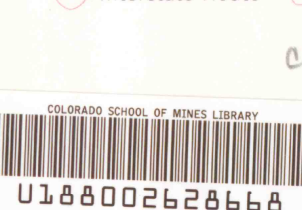
Mapped, edited, and published by the Geological Survey
as part of the Department of the Interior program
for the development of the Missouri River Basin
Control by USGS and USC&GS
Culture and drainage in part compiled from aerial photographs
taken 1948. Topography by planetable surveys 1953
Limited revision 1971
Polyconic projection. 1927 North American datum
10,000-foot grid based on Colorado coordinate system,
north zone
1000-meter Universal Transverse Mercator grid ticks,
zone 13, shown in blue



SCALE 1:24,000
CONTOUR INTERVAL 10 FEET
DATUM IS MEAN SEA LEVEL
THIS MAP COMPLIES WITH NATIONAL MAP ACCURACY STANDARDS
FOR SALE BY U.S. GEOLOGICAL SURVEY, DENVER, COLORADO 80225, OR WASHINGTON, D.C. 20242
A FOLDER DESCRIBING TOPOGRAPHIC MAPS AND SYMBOLS IS AVAILABLE ON REQUEST



ROAD CLASSIFICATION
Primary highway, hard surface
Secondary highway, hard surface
Unimproved road
Interstate Route
U.S. Route
State Route



SEDGWICK, COLO.
N4052.5-W10230/7.5
1953
LIMITED REVISION 1971
AMS 5465 1 NE-SERIES V877

OFFICE COPY

5566 1/4 SW
10TH PELL

G 3701
C222
S24
U5