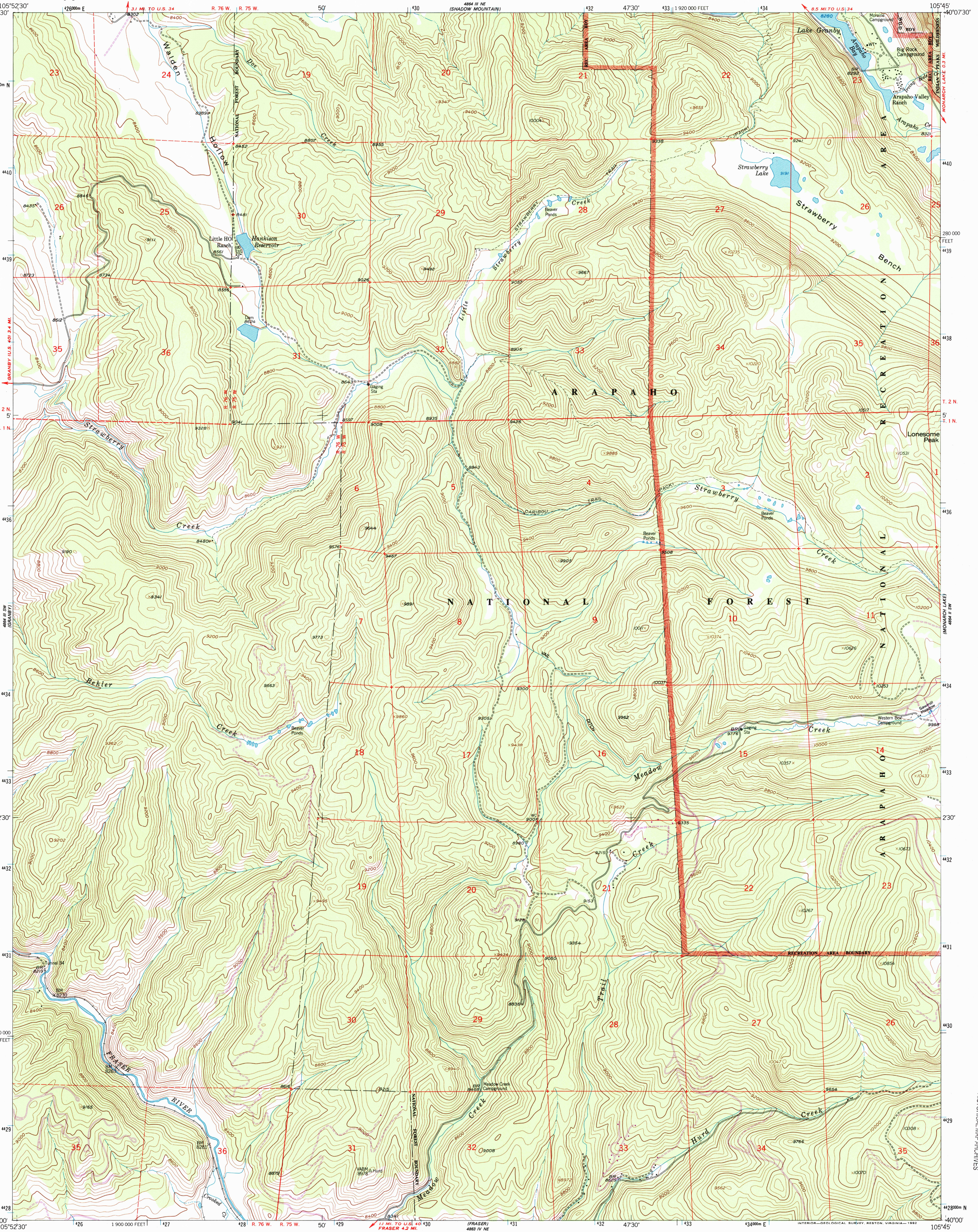


STRAWBERRY LAKE QUADRANGLE
COLORADO-GRAND CO.
7.5 MINUTE SERIES (TOPOGRAPHIC)

USGS U.S. DEPARTMENT OF THE INTERIOR
U.S. GEOLOGICAL SURVEY



Mapped, edited, and published by the Geological Survey
Control by USGS and NOS/NOAA
Topography by photogrammetric methods from aerial photographs
taken 1953. Field checked 1958
Polyconic projection. 1927 North American Datum
10,000-foot grid based on Colorado coordinate system,
north zone
1000-meter Universal Transverse Mercator grid ticks, zone 13,
shown in blue
The difference between 1927 North American Datum and North
American Datum of 1983 (NAD 83) for 7.5 minute intersections is
given in USGS Bulletin 1875. The NAD 83 is shown by dashed
corner ticks
Dashed land lines indicate approximate locations
Certain land lines omitted in T.1N-R.76W.
because of insufficient data
Unchecked elevations are shown in brown
There may be private inholdings within the boundaries of
the National or State reservations shown on this map

SCALE 1:24 000
1 0 1000 2000 3000 4000 5000 6000 7000 FEET
1 KILOMETER
CONTOUR INTERVAL 40 FEET
NATIONAL GEODETIC VERTICAL DATUM OF 1929
THIS MAP COMPLIES WITH NATIONAL MAP ACCURACY STANDARDS
FOR SALE BY U.S. GEOLOGICAL SURVEY, P.O. BOX 25286, DENVER, COLORADO 80225
A FOLDER DESCRIBING TOPOGRAPHIC MAPS AND SYMBOLS IS AVAILABLE ON REQUEST

ROAD CLASSIFICATION
Light-duty ——— Unimproved dirt ———
STRAWBERRY LAKE, COLO.
40105-A7-TF-024
1958
PHOTOREVISED 1978
DMA 4864 III SE-SERIES V877

RECEIVED
JUL 31 1999
USGS MND
HISTORICAL MAP ARCHIVES