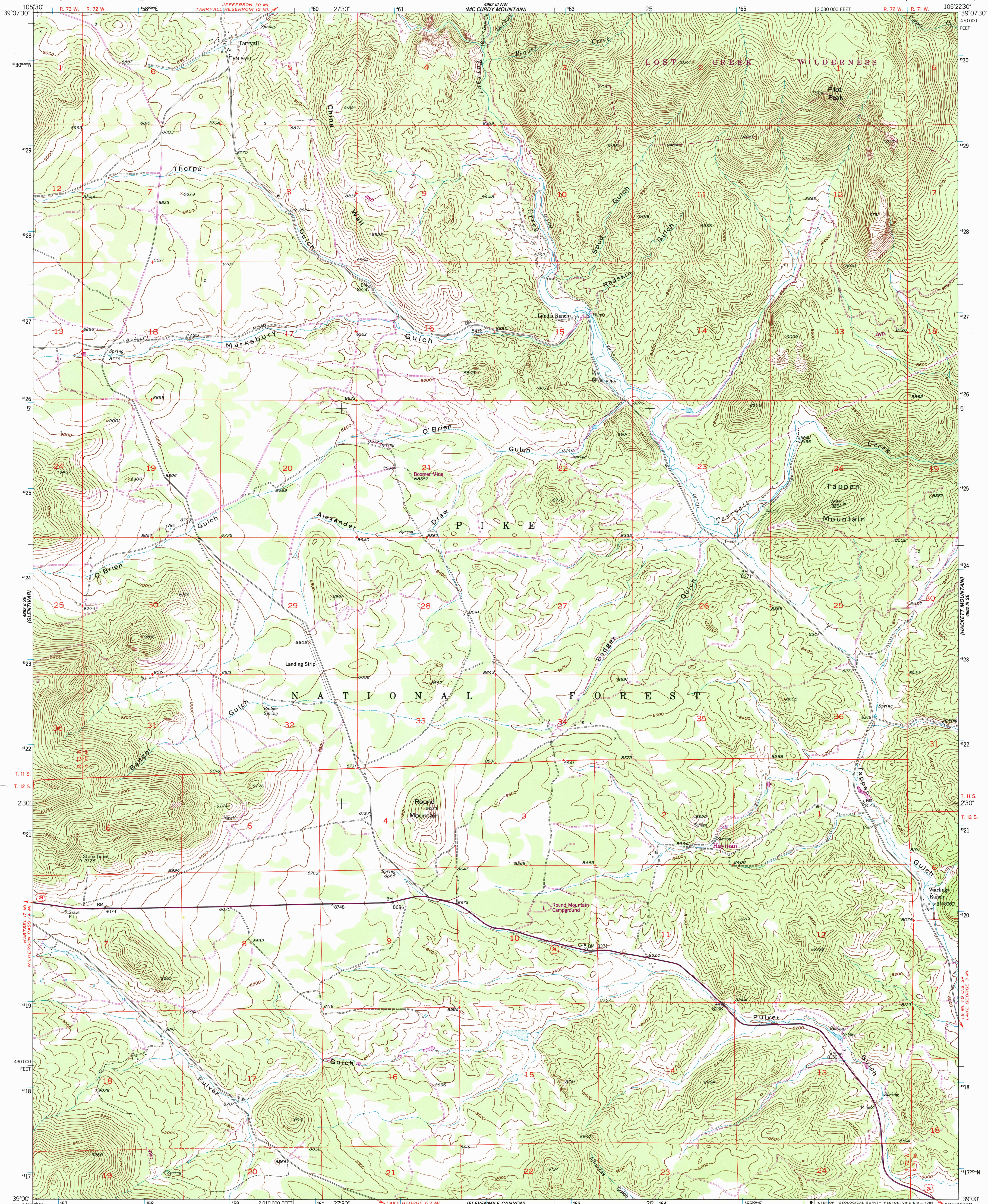


UNITED STATES  
DEPARTMENT OF THE INTERIOR  
GEOLOGICAL SURVEY

TARRYALL QUADRANGLE  
COLORADO-PARK CO.  
7.5 MINUTE SERIES (TOPOGRAPHIC)



Mapped, edited, and published by the Geological Survey as part of the Department of the Interior program for the development of the Missouri River Basin.

Control by USGS and NOS/NOAA

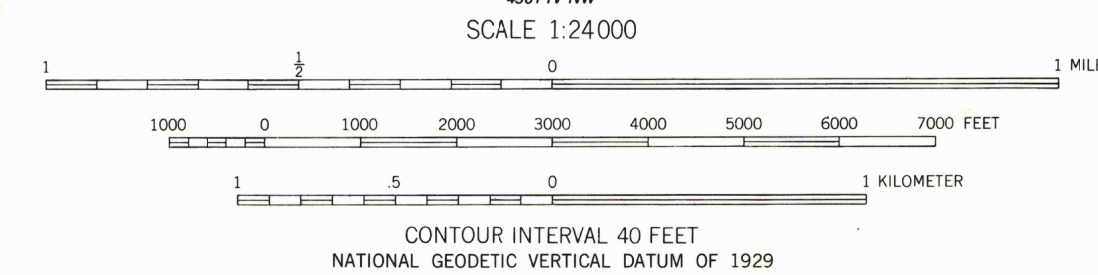
Topography from aerial photographs by multiplex methods. Aerial photographs taken 1953. Field check 1956.

Polycyclic projection. 1927 North American Datum 10,000-foot grid based on Colorado coordinate system, central zone 1000-meter Universal Transverse Mercator grid ticks, zone 13, shown in blue.

Dashed land lines indicate approximate locations.

To place on the predicted North American Datum 1983 move the projection lines 4 meters north and 49 meters east as shown by dashed corner ticks.

There may be private inholdings within the boundaries of the National or State reservations shown on this map.



THIS MAP COMPLIES WITH NATIONAL MAP ACCURACY STANDARDS FOR SALE BY U.S. GEOLOGICAL SURVEY, DENVER, COLORADO 80225, OR RESTON, VIRGINIA 22092. A FOLDER DESCRIBING TOPOGRAPHIC MAPS AND SYMBOLS IS AVAILABLE ON REQUEST.

Revisions shown in purple and woodland compiled from aerial photographs taken 1983 and other source data. Partial field check by U.S. Forest Service. Map edited 1984.

ROAD CLASSIFICATION

Primary highway, hard surface. Secondary highway, hard surface. Interstate Route. U.S. Route. State Route.

Light-duty road, hard or improved surface. Unimproved road. Dashed line.

TARRYALL, COLO.  
39105-A4-TF-024  
1956  
PHOTOREVISED 1984  
DMA 4962 III SW-SERIES V877

RETURN TO:  
USGS AND HISTORICAL MAP ARCHIVES