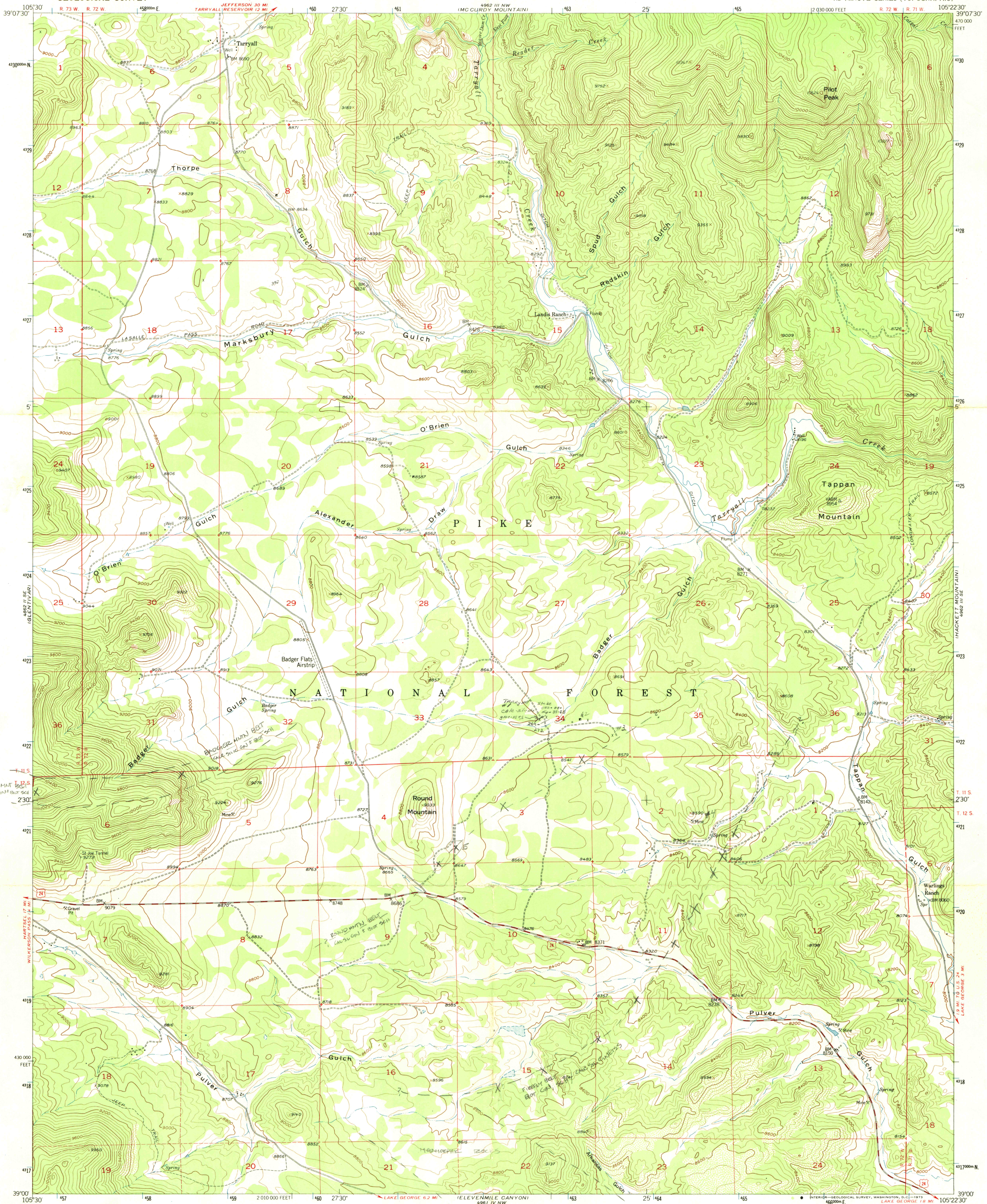
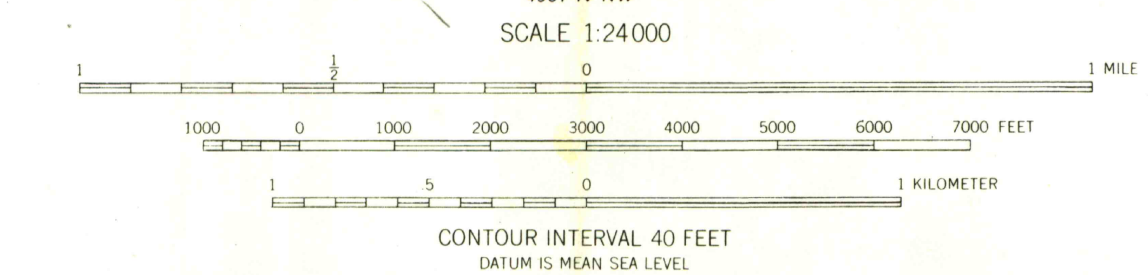
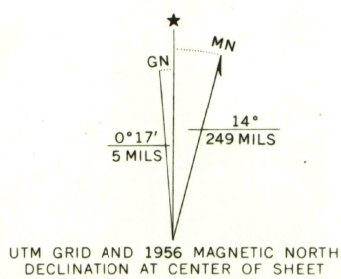


UNITED STATES  
DEPARTMENT OF THE INTERIOR  
GEOLOGICAL SURVEY

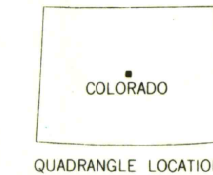
TARRYALL QUADRANGLE  
COLORADO-PARK CO.  
7.5 MINUTE SERIES (TOPOGRAPHIC)



Maped, edited, and published by the Geological Survey as part of the Department of the Interior program for the development of the Missouri River Basin Control by USGS and USC&GS  
Topography from aerial photographs by multiplex methods  
Aerial photographs taken 1953. Field check 1956  
Polyconic projection. 1927 North American datum  
10,000 foot grid based on Colorado coordinate system, central zone  
1000-meter Universal Transverse Mercator grid ticks, zone 13, shown in blue  
Dashed land lines indicate approximate locations



EXPLANATION  
MH B&S  
LAKES, SWAMP, OCCUR, Medium duty  
Unimproved dirt  
U.S. Route



MAR 30 2004

TARRYALL, COLO.  
N3900-W10522.5/7.5

G 3700  
524  
104  
MAP ROOM

THIS MAP COMPLIES WITH NATIONAL MAP ACCURACY STANDARDS  
FOR SALE BY U.S. GEOLOGICAL SURVEY, DENVER, COLORADO 80225, OR WASHINGTON, D.C. 20242  
A FOLDER DESCRIBING TOPOGRAPHIC MAPS AND SYMBOLS IS AVAILABLE ON REQUEST

AMS 4962 III SW-SERIES V877