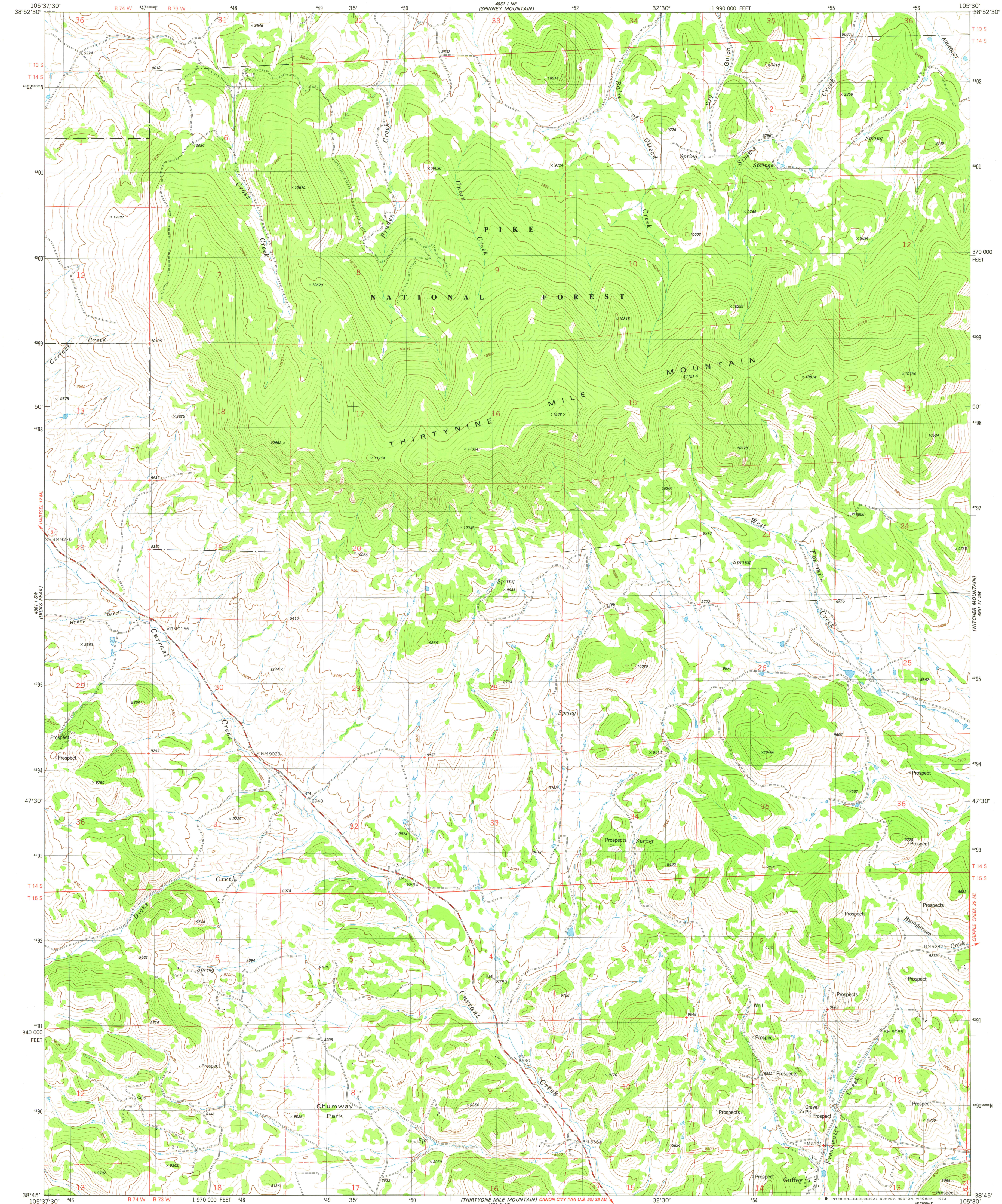


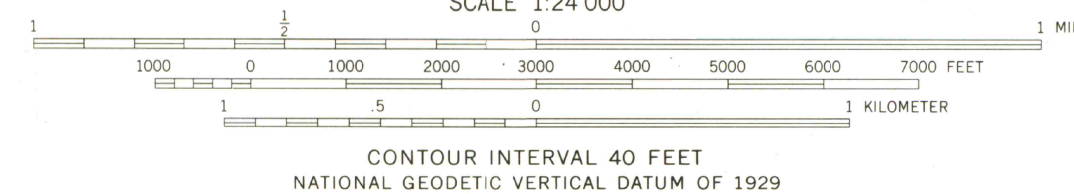
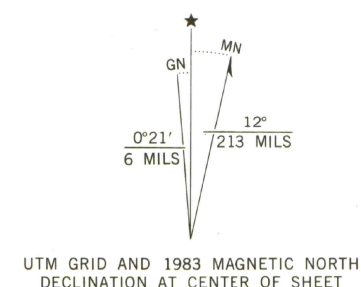
UNITED STATES
DEPARTMENT OF THE INTERIOR
GEOLOGICAL SURVEY

THIRTYNINE MILE MOUNTAIN QUADRANGLE
COLORADO-PARK CO.
7.5 MINUTE SERIES (TOPOGRAPHIC)

8E/4 GUFFEY 15' QUADRANGLE

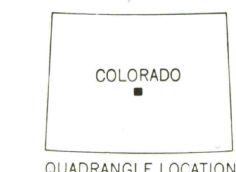


Mapped, edited, and published by the Geological Survey
Control by USGS and NOS/NOAA
Topography by photogrammetric methods from aerial photographs
taken 1975. Field checked 1976. Map edited 1983
Projection and 10,000-foot grid ticks: Colorado
coordinate system, central zone (Lambert conformal conic)
1000-meter Universal Transverse Mercator grid, zone 13
1927 North American datum
To place on the predicted North American Datum 1983
move the projection lines 4 meters north and
49 meters east as shown by dashed corner ticks
Fine red dashed lines indicate selected fence lines
There may be private inholdings within the boundaries of
the National or State reservations shown on this map



THIS MAP COMPLIES WITH NATIONAL MAP ACCURACY STANDARDS
FOR SALE BY U.S. GEOLOGICAL SURVEY, DENVER, COLORADO 80225, OR RESTON, VIRGINIA 22092
A FOLDER DESCRIBING TOPOGRAPHIC MAPS AND SYMBOLS IS AVAILABLE ON REQUEST

OFFICE COPY



ROAD CLASSIFICATION
Primary highway, hard surface
Secondary highway, hard surface
Unimproved road
Interstate Route
U. S. Route
State Route

THIRTYNINE MILE MOUNTAIN, COLO.
8E/4 GUFFEY 15' QUADRANGLE
N3845-W10530/7.5

1983

DMA 4861 I SE-SERIES V877

G
C222
S24
U5

LIBRARY USE ONLY

APR 12 1984
MAP ROOM
ARTHUR LAKES