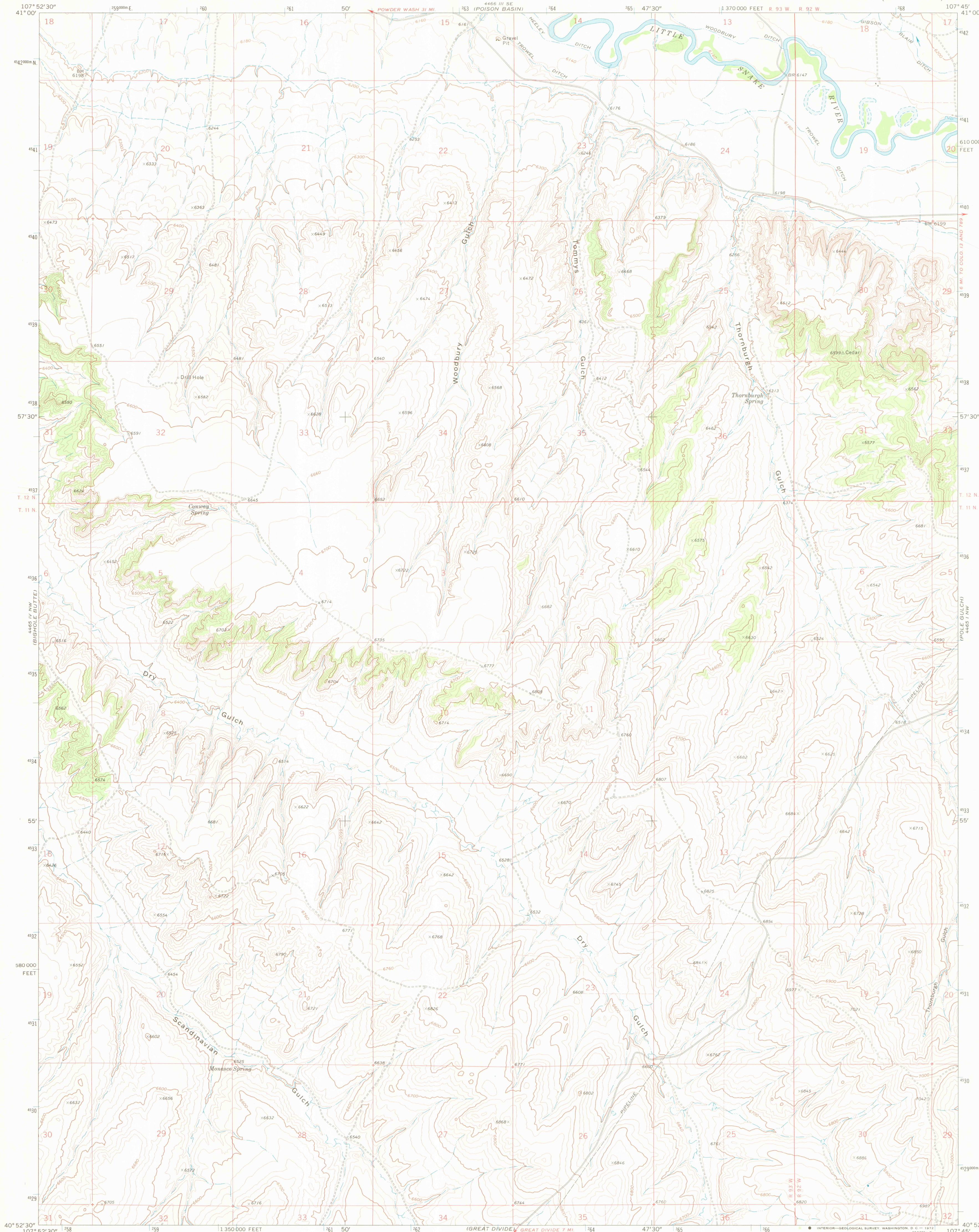
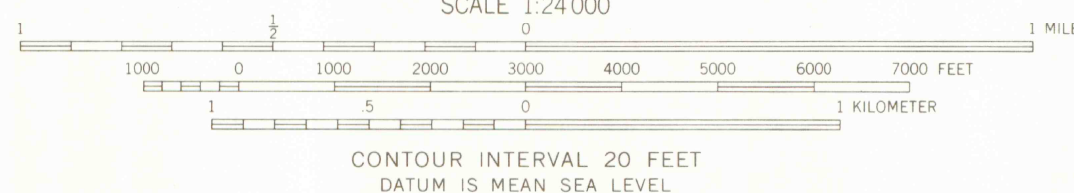
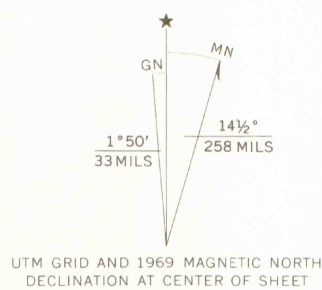


UNITED STATES  
DEPARTMENT OF THE INTERIOR  
GEOLOGICAL SURVEY

THORNBURGH GULCH QUADRANGLE  
COLORADO—MOFFAT CO.  
7.5 MINUTE SERIES (TOPOGRAPHIC)



Mapped, edited, and published by the Geological Survey  
Control by USGS and USC&GS  
Topography by photogrammetric methods from aerial  
photographs taken 1968. Field checked 1969  
Polyconic projection. 1927 North American datum  
10,000-foot grid based on Colorado coordinate system,  
north zone  
1000-meter Universal Transverse Mercator grid ticks,  
zone 13, shown in blue  
Fine red dashed lines indicate selected fence lines



CONTOUR INTERVAL 20 FEET  
DATUM IS MEAN SEA LEVEL



ROAD CLASSIFICATION  
Primary highway, hard surface  
Secondary highway, hard surface  
Unimproved road  
Interstate Route  
U.S. Route  
State Route  
Light-duty road, hard or improved surface  
Unimproved road  
Interstate Route  
U.S. Route  
State Route

THORNBURGH GULCH, COLO.  
N4052.5—W10745/7.5

1969

AMS 4465 IV NE—SERIES V877

THIS MAP COMPLIES WITH NATIONAL MAP ACCURACY STANDARDS  
FOR SALE BY U.S. GEOLOGICAL SURVEY, DENVER, COLORADO 80225, OR WASHINGTON, D.C. 20242  
A FOLDER DESCRIBING TOPOGRAPHIC MAPS AND SYMBOLS IS AVAILABLE ON REQUEST

ARTHUR LAKES LIBRARY  
COLORADO SCHOOL OF MINES