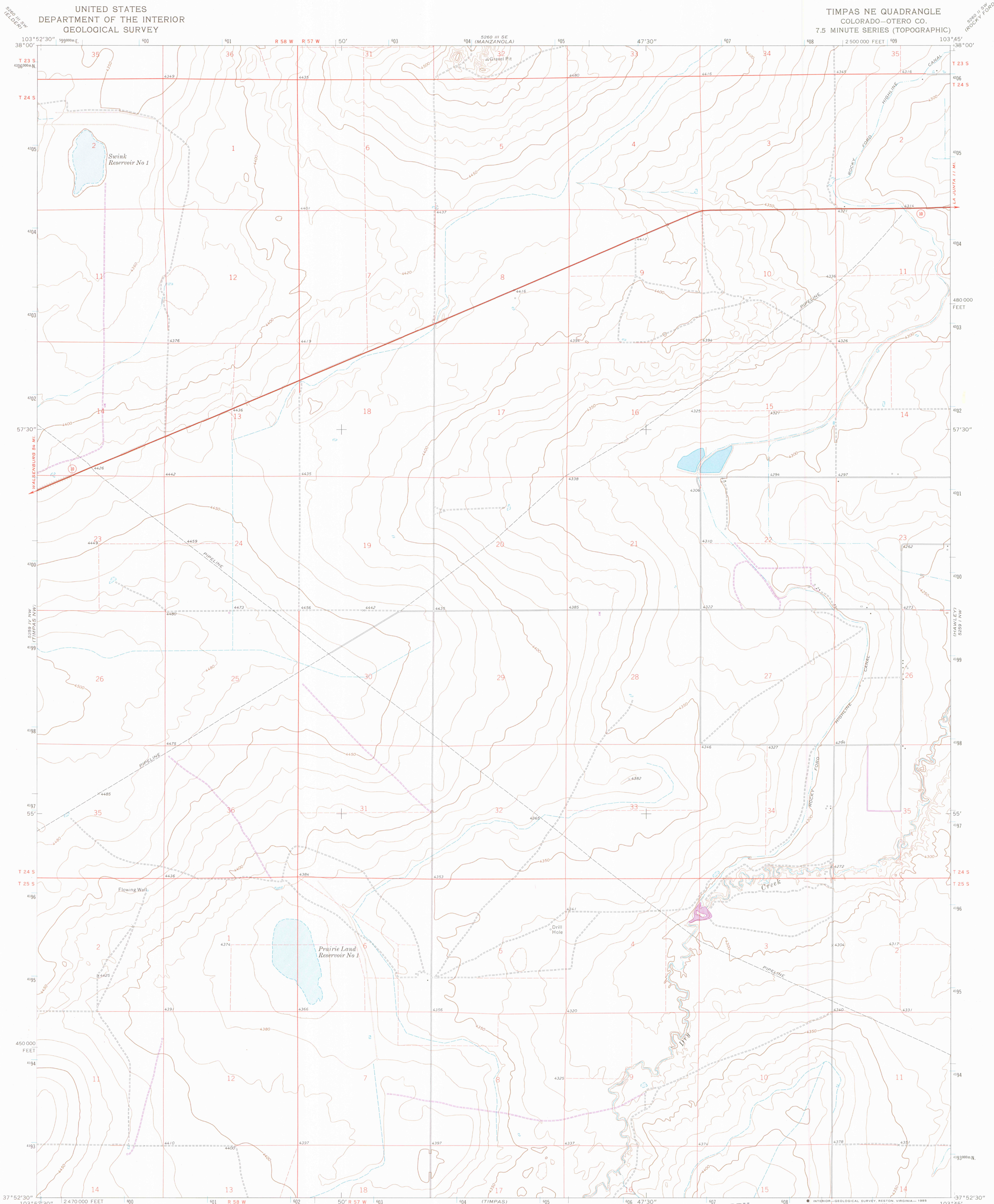


UNITED STATES
DEPARTMENT OF THE INTERIOR
GEOLOGICAL SURVEY

TIMPAS NE QUADRANGLE
COLORADO—OTERO CO.
7.5 MINUTE SERIES (TOPOGRAPHIC)



Mapped, edited, and published by the Geological Survey

Control by USGS and NOS/NOAA

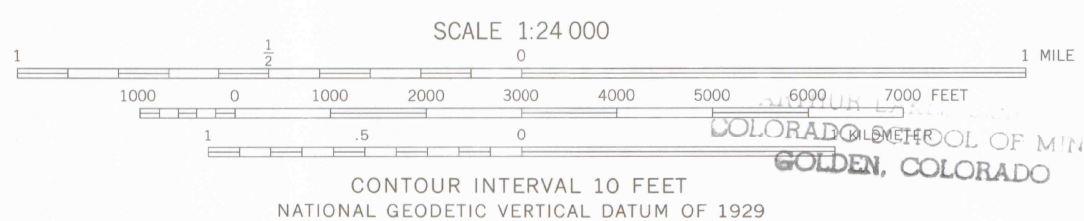
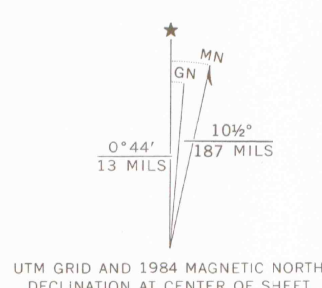
Topography by photogrammetric methods from aerial photographs taken 1971. Field checked 1972

Projection and 10,000-foot grid ticks: Colorado coordinate system, south zone (Lambert conformal conic) 1000-meter Universal Transverse Mercator grid ticks, zone 13, shown in blue. 1927 North American Datum

Fine red dashed lines indicate selected fence lines

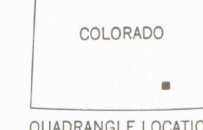
To place on the predicted North American Datum 1983 move the projection lines 2 meters north and 45 meters east as shown by dashed corner ticks

Revisions shown in purple and woodland compiled from aerial photographs taken 1983 and other source data This information not field checked. Map edited 1984



THIS MAP COMPLIES WITH NATIONAL MAP ACCURACY STANDARDS
FOR SALE BY U.S. GEOLOGICAL SURVEY, DENVER, COLORADO 80225, OR RESTON, VIRGINIA 22092
A FOLDER DESCRIBING TOPOGRAPHIC MAPS AND SYMBOLS IS AVAILABLE ON REQUEST

OFFICE COPY
LIBRARY USE ONLY



ROAD CLASSIFICATION
Primary highway, hard surface
Secondary highway, hard surface
Unimproved road
Light-duty road, hard or improved surface
Interstate Route
U. S. Route
State Route

GEOLOGICAL SURVEY OF WYOMING
TIMPAS NE, COLO.
37103-H7-TF-024

1972
PHOTOREVISED 1984
DMA 5259 IV NE—SERIES V877

LIBRARY
DOCUMENT COLLECTION
NOV 20 1985
UNIVERSITY OF WYOMING