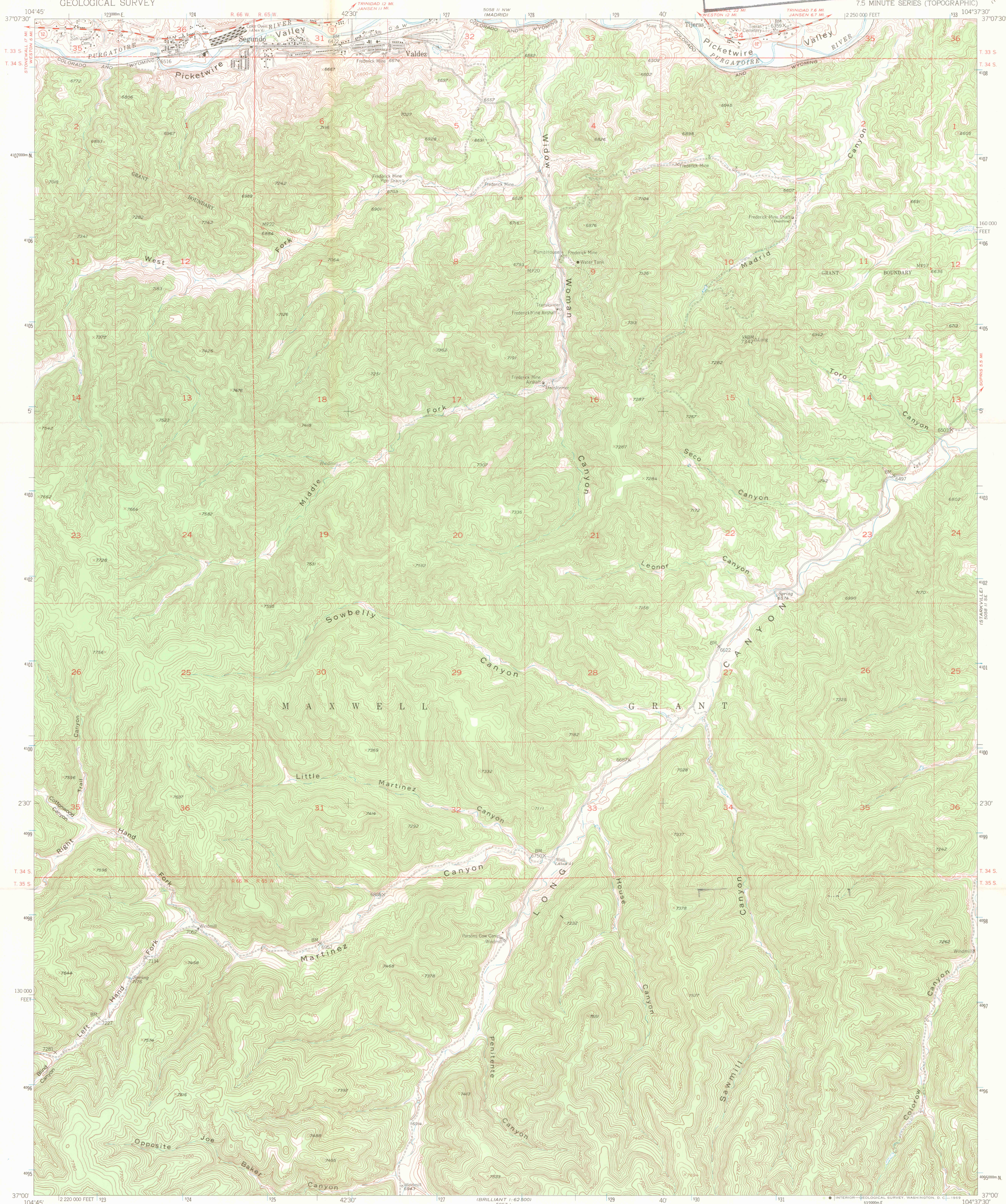


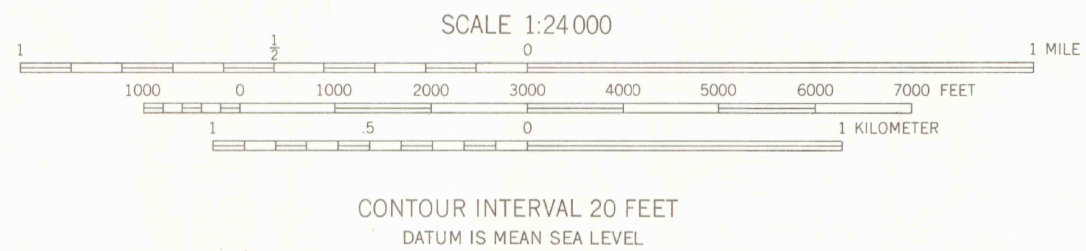
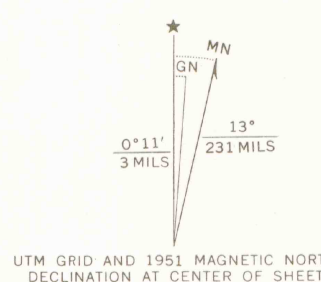
UNITED STATES
DEPARTMENT OF THE INTERIOR
GEOLOGICAL SURVEY

ALPINE RESCUE TEAM, INC.
P.O. BOX 934 • EVERGREEN, COLO. • 80439

VALDEZ QUADRANGLE
COLORADO-LAS ANIMAS CO.
7.5 MINUTE SERIES (TOPOGRAPHIC)

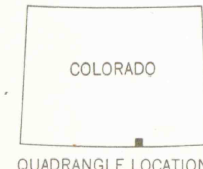


Mapped, edited, and published by the Geological Survey
Control by USGS and USC&GS
Topography from aerial photographs by multiplex methods
Aerial photographs taken 1947. Field check 1951
Polyconic projection. 1927 North American datum
10,000-foot grid based on Colorado coordinate system,
south zone
Dashed land lines indicate approximate locations
Land lines unsurveyed in T. 35 S.-R. 66 W. and
T. 35 S.-R. 66 W.
Unchecked elevations are shown in brown
1000-meter Universal Transverse Mercator grid ticks,
zone 13, shown in blue



THIS MAP COMPLIES WITH NATIONAL MAP ACCURACY STANDARDS
FOR SALE BY U.S. GEOLOGICAL SURVEY, DENVER, COLORADO 80225 OR WASHINGTON, D.C. 20242
A FOLDER DESCRIBING TOPOGRAPHIC MAPS AND SYMBOLS IS AVAILABLE ON REQUEST

ROAD CLASSIFICATION
Heavy-duty 4 LANE 16 LANE Light-duty
Medium-duty 4 LANE 16 LANE Unimproved dirt
U.S. Route State Route



VALDEZ, COLO.
N3700-W10437.5/7.5

1951

AMS 5058 II SW-SERIES V877