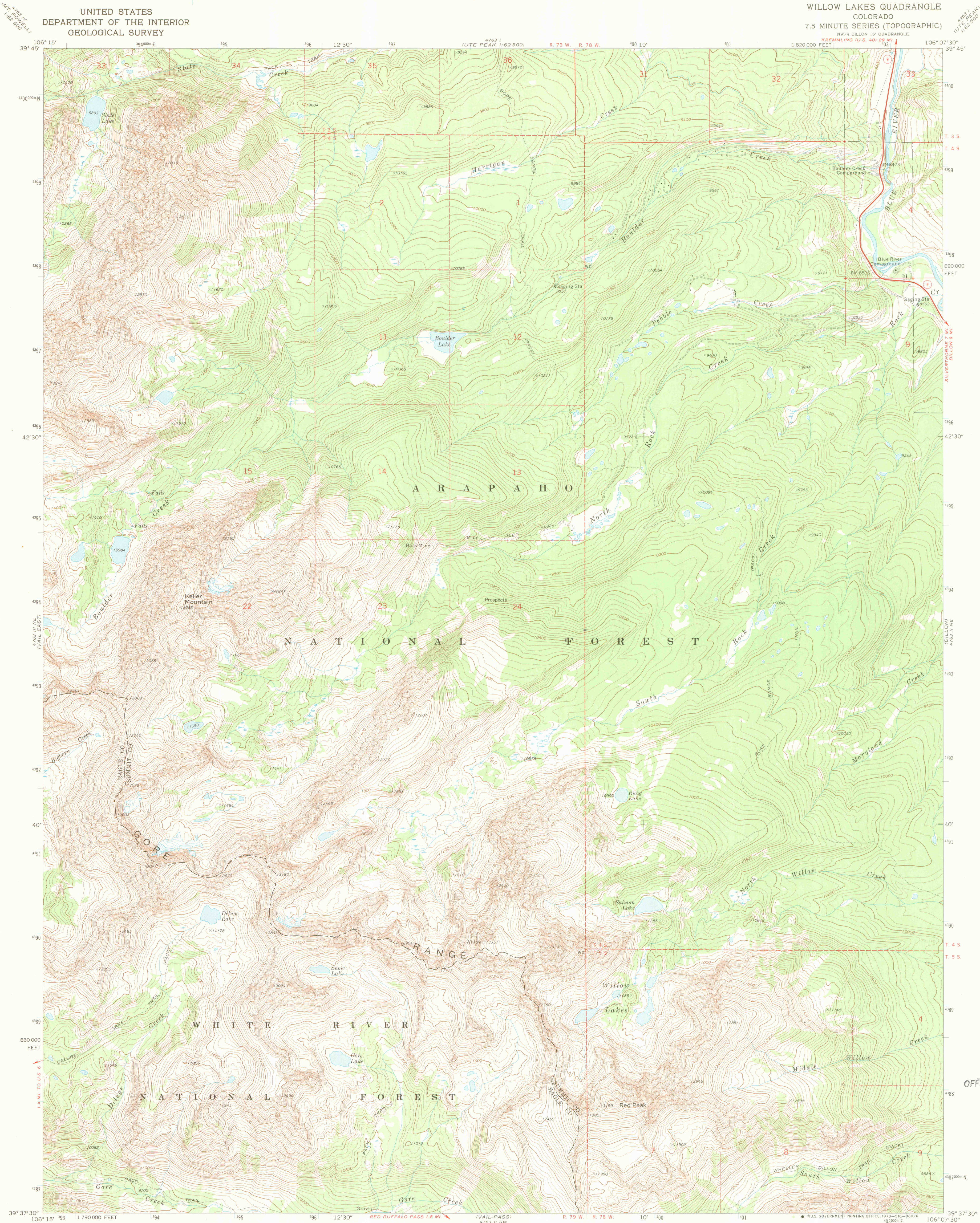
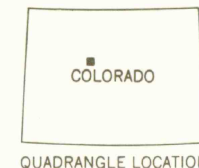
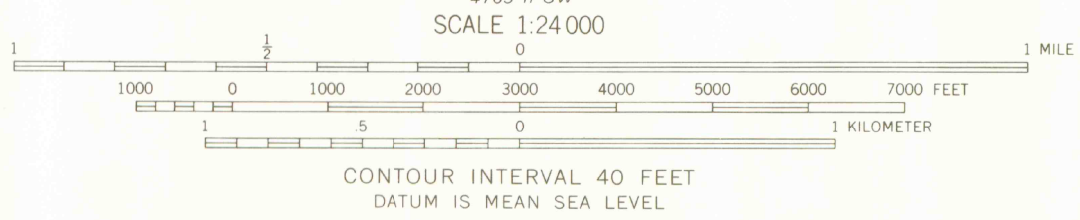
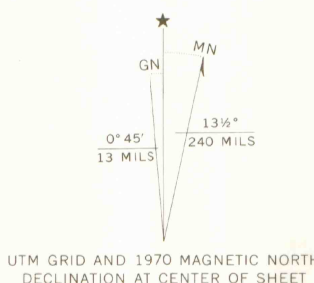


UNITED STATES
DEPARTMENT OF THE INTERIOR
GEOLOGICAL SURVEY

WILLOW LAKES QUADRANGLE
COLORADO
7.5 MINUTE SERIES (TOPOGRAPHIC)



Mapped, edited, and published by the Geological Survey
Control by USGS and USC&GS
Topography by photogrammetric methods from aerial
photographs taken 1969. Field checked 1970
Polyconic projection. 1927 North American datum
10,000-foot grid based on Colorado coordinate system,
central zone
1000-meter Universal Transverse Mercator grid ticks,
zone 13, shown in blue
Certain land lines are omitted because of insufficient data



ROAD CLASSIFICATION	
Primary highway, hard surface	Light-duty road, hard or improved surface
Secondary highway, hard surface	Unimproved road
Interstate Route	U. S. Route
	State Route

WILLOW LAKES, COLO.
NW 1/4 DILLON 15' QUADRANGLE
N 3937.5-W 10607.5/7.5

1970

AMS 4763 II NW-SERIES V877
LIBRARY USE ONLY

SEP 3 1979
MAP ROOM
ARTHUR LAKES LIBRARY

OFFICE COPY 1

G 3700
s24
.G4
MAP ROOM