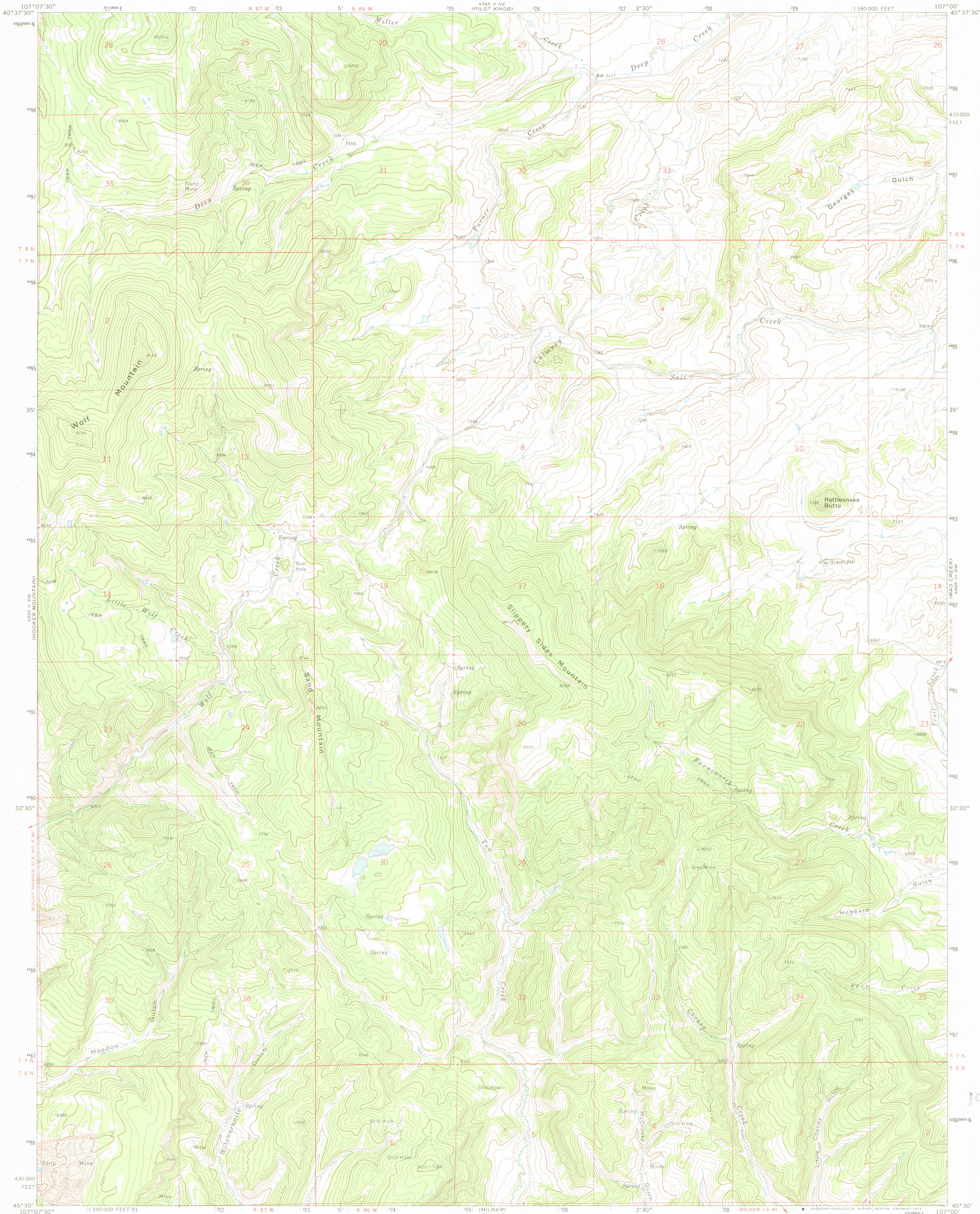


UNITED STATES
DEPARTMENT OF THE INTERIOR
GEOLOGICAL SURVEY

WOLF MOUNTAIN QUADRANGLE
COLORADO—ROUTT CO.
7.5 MINUTE SERIES (TOPOGRAPHIC)
SE 1/4 PILOT KNOB 15' QUADRANGLE



Mapped, edited, and published by the Geological Survey

Control by USGS and USC&GS

Topography by photogrammetric methods from aerial

photographs taken 1970. Field checked 1971

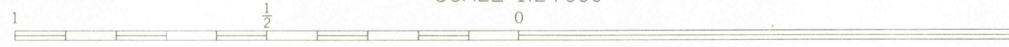
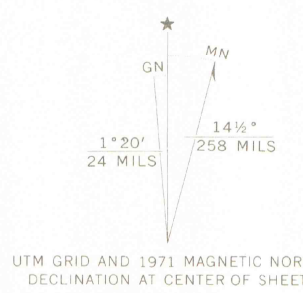
Projection and 10,000-foot grid ticks: Colorado

coordinate system, north zone (Lambert conformal conic)

1000-meter Universal Transverse Mercator grid ticks,

zone 13, shown in blue. 1927 North American datum

Fine red dashed lines indicate selected fence lines



CONTOUR INTERVAL 40 FEET

DATUM IS MEAN SEA LEVEL

COLORADO

QUADRANGLE LOCATION

ROAD CLASSIFICATION
Primary highway, hard surface
Secondary highway, hard surface
Unimproved road
Interstate Route
U. S. Route
State Route

WOLF MOUNTAIN, COLO.

SE 1/4 PILOT KNOB 15' QUADRANGLE

N4030-W10700/7.5

1971

AMS 4565 II SE—SERIES V877

THIS MAP COMPLIES WITH NATIONAL MAP ACCURACY STANDARDS
FOR SALE BY U. S. GEOLOGICAL SURVEY, DENVER, COLORADO 80225, OR RESTON, VIRGINIA 22092
A FOLDER DESCRIBING TOPOGRAPHIC MAPS AND SYMBOLS IS AVAILABLE ON REQUEST