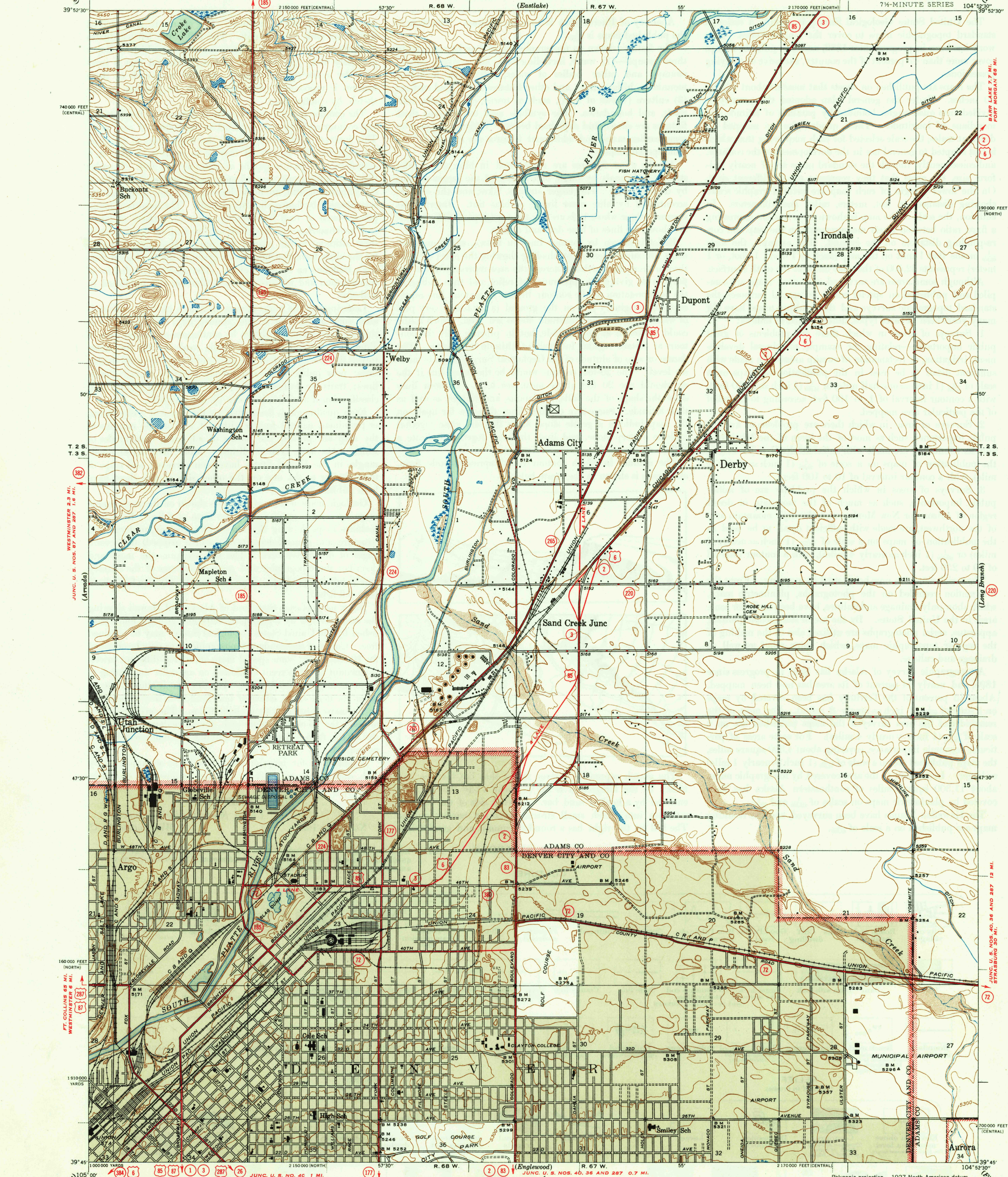


U. S. G. S.
FILE COPY
Inspection and Editing

UNITED STATES
DEPARTMENT OF THE INTERIOR
GEOLOGICAL SURVEY

STATE OF COLORADO
STATE HIGHWAY DEPARTMENT
CITY AND COUNTY OF DENVER
DENVER BOARD OF WATER COMMISSIONERS

COLORADO
DERBY QUADRANGLE
7 1/4-MINUTE SERIES



Glenn S. Smith, Division Engineer
Topography by J. H. Summers, C. Weible, C. E. Blunt,
H. E. O'Dell, and from Denver City special survey
Surveyed in 1938 DENVER (CIVIC CENTER) 0.7 MI.
Work Projects Administration Nos. 674-2552-3031-3687
Colorado State Highway Department, City and County of Denver,
Denver Board of Water Commissioners, Sponsors
Fred Graff, Jr., Geological Survey, Supervisor
Gray tint indicates areas in which only
landmark buildings are shown

Scale 1:680
Contour interval 10 feet
Datum is mean sea level
U.S. G. S.
Historical File
Topographic Division

Polyconic projection. 1927 North American datum
5000 yard grid based on U. S. zone system, E
10000 foot grids based on Colorado (North) and
Colorado (Central) rectangular coordinate systems
ROAD CLASSIFICATION
1946
Dependable hard surface
Heavy-duty road
Secondary hard surface
Loose-surface graded
Unsurfaced, graded
Dirt road
U. S. Route 16
State Route 26
More than two lanes indicated along road with tick at point of change. 3 LANE, 2 LANE
DERBY, COLO.
Edition of 1947
N3945-W10452.5/7.5

U. S. G. S.
FILE COPY
Inspection and Editing