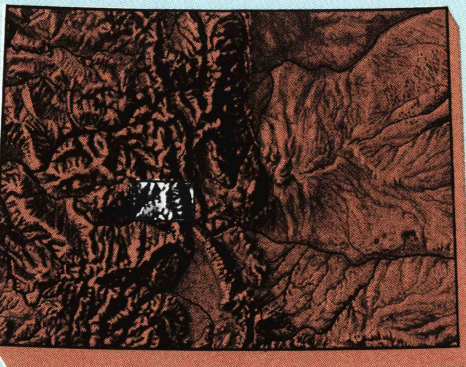


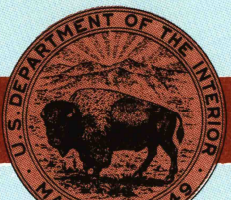
Gunnison  
COLORADO

1:100 000-scale metric  
topographic map



30 X 60 MINUTE QUADRANGLE  
SHOWING

- Contours and elevations in meters
- Highways, roads and other manmade structures
- Water features
- Woodland areas
- Geographic names



GEOLOGICAL SURVEY

1984

Produced by the United States Geological Survey  
Compiled from USGS 1:24 000-scale topographic maps dated 1954-1983. Partially revised from aerial photographs taken 1979 and other source data  
Revised information not field checked  
Map edited 1984

Projection and 10 000-meter grid, zone 13  
Universal Transverse Mercator  
25 000-foot grid ticks based on Colorado coordinate system, central zone, 1927 North American Datum  
To place on the predicted North American Datum 1983 move the projection lines 4 meters north and 52 meters east  
Where omitted, land lines have not been established or are not shown because of insufficient data  
There may be private inholdings within the boundaries of the National or State reservations shown on this map

CONTOUR INTERVAL 50 METERS  
NATIONAL GEODETIC VERTICAL DATUM OF 1929

THIS MAP COMPLIES WITH NATIONAL MAP ACCURACY STANDARDS

CONVERSION TABLE

Meters	Feet
1	3.2808
2	6.5617
3	9.8425
4	13.1234
5	16.4042
6	19.6850
7	22.9659
8	26.2467
9	29.5276
10	32.8084

To convert meters to feet  
multiply by 3.2808

To convert feet to meters  
multiply by 0.3048

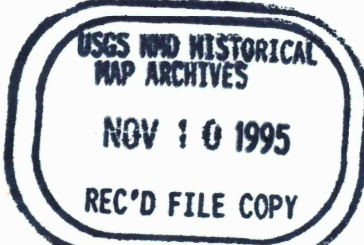
DECLINATION DIAGRAM

UTM grid convergence  
(GN) and 1984 magnetic  
declination (M)  
at center of map  
Diagram is approximate

ADJOINING MAPS

1	2	3
6	7	8

- 1 Carbondale
- 2 Leadville
- 3 Bailey
- 4 Paoletti
- 5 Pikes Peak
- 6 Moser
- 7 Squague
- 8 Canon City



Topographic Map Symbols

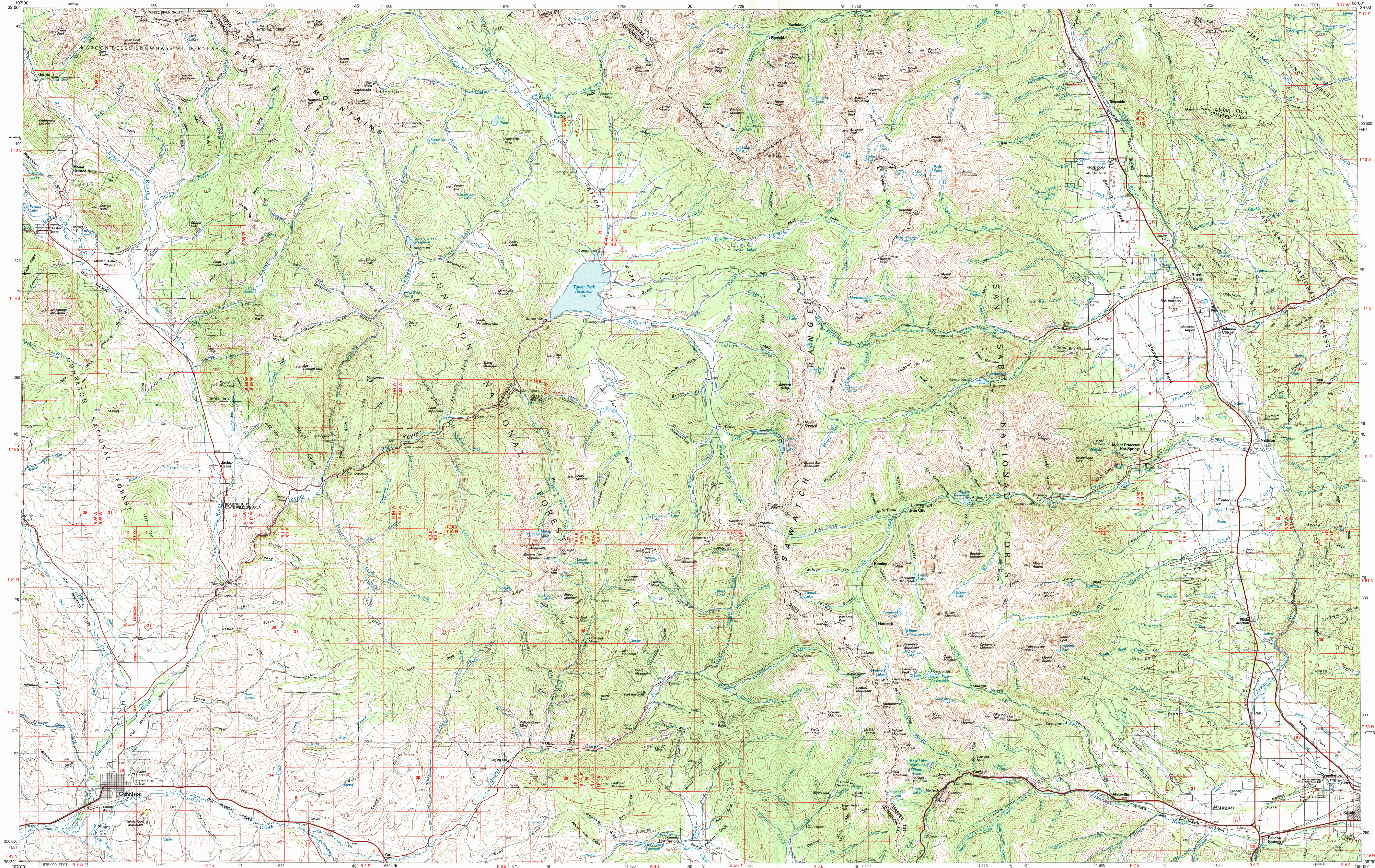
Primary highway, hard surface	
Secondary highway, hard surface	
Light duty road, principal street, hard or improved surface	
Other road or street, trail	
Route marker: Interstate, U. S., State	
Railroad: standard gage, narrow gage	
Bridge, overpass, underpass	
Tunnel: road, railroad	
Built up area, locality, settlement	
Airport: landing field, landing strip	
National boundary	
State boundary	
County boundary	
National or State reservation boundary	
Land grant boundary	
U. S. public lands survey: range, township, section	
Range, township, section line: protracted	
Power transmission line, pipeline	
Dam, dam with lock	
Cemetery, building	
Wellhead, water well, spring	
Mine shaft, adit or cave mine, quarry, gravel pit	
Campground, picnic area, U. S. location monument	
Ruins, cliff dwelling	
Distorted surface: strip mine, levee, sand	
Contours: index, intermediate, supplementary	
Bathymetric contours: index, intermediate	
Stream, lake: perennial, intermittent	
Rapids, large and small, falls, large and small	
Area to be submerged: marsh, swamp	
Land subject to controlled inundation: woodland	
Scrub, mangrove	
Orchard, vineyard	

A pamphlet describing topographic maps is available on request

FOR SALE BY U.S. GEOLOGICAL SURVEY  
DENVER, COLORADO 80225, OR RESTON, VIRGINIA 22092

GUNNISON, COLORADO  
38106-E1-TM-100

1984



SCALE 1:100 000

1 CM MAP REPRESENTS 1 KILOMETER ON THE GROUND  
CONTOUR INTERVAL 50 METERS

CONTOUR INTERVAL 50 METERS