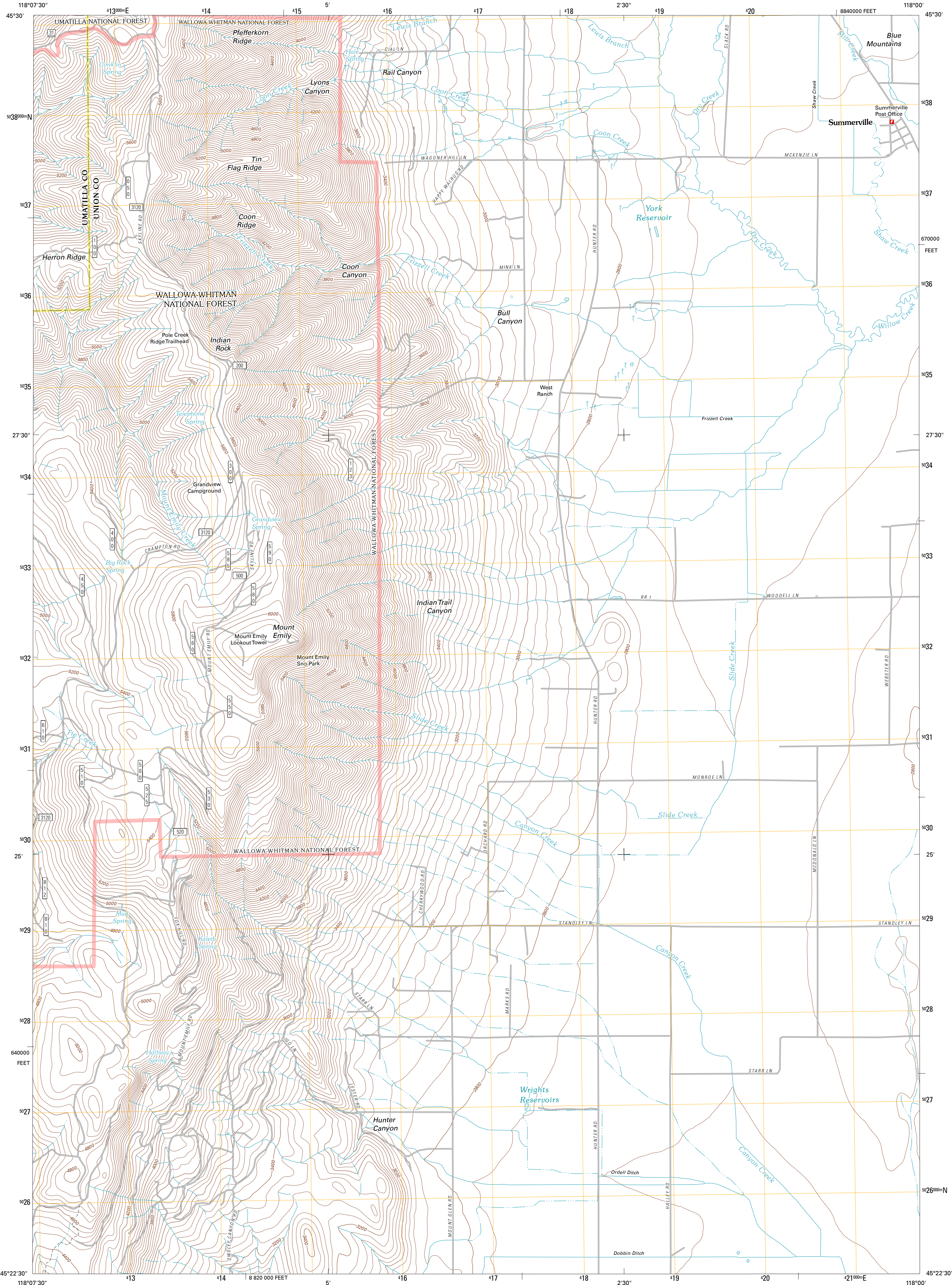




U.S. DEPARTMENT OF THE INTERIOR
U. S. GEOLOGICAL SURVEY

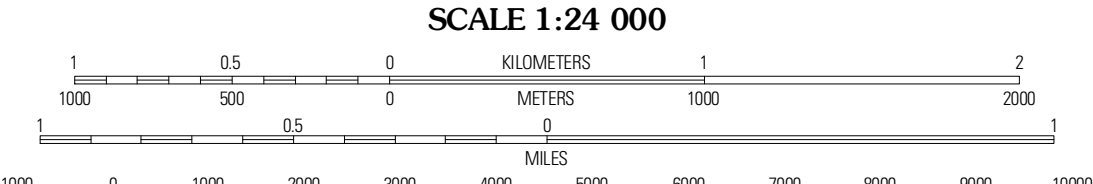
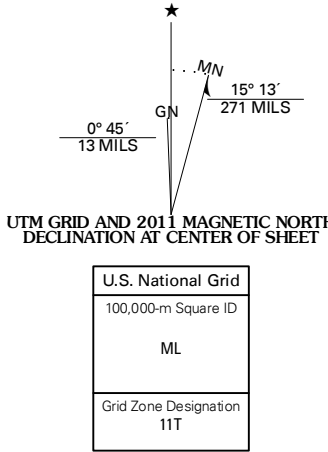


SUMMERVILLE QUADRANGLE
OREGON
7.5-MINUTE SERIES



Produced by the United States Geological Survey
North American Datum of 1983 (NAD83)
World Geodetic System of 1984 (WGS84). Projection and
1 000-meter grid. Universal Transverse Mercator, Zone 11T
10 000-foot ticks. Oregon Coordinate System of 1983 (north
zone)

Imagery.....NAIP, July 2009
Roads.....©2006-2010 Tele Atlas
Roads within US Forest Service Lands.....FS Topo Data
with limited Forest Service updates, 2009
Names.....GNS, 2010
Hydrography.....National Hydrography Dataset, 2009
Contours.....National Elevation Dataset, 2000
Boundaries.....Census, IBWC, IBC, USGS, 1972 - 2010



CONTOUR INTERVAL 40 FEET
NORTH AMERICAN VERTICAL DATUM OF 1988
This map was produced to conform with version 0.5.10
of the USGS US Topo Product Standard.
A metadata file associated with this product is draft version 0.5.16



QUADRANGLE LOCATION

Thimbleberry Mountain	Sunderson Spring	Elgin
Drumhill Ridge	Summerville	Inbaker
Higard	La Grande	Conley

ROAD CLASSIFICATION

Interstate Route	State Route
US Route	Local Road
Ramp	4WD

Legend for road types: Interstate Route, US Route, FS Primary Route, FS Passenger Route, FS High Clearance Route, State Route.

Check with local Forest Service unit
for current travel conditions and restrictions.

SUMMERVILLE, OR
2011