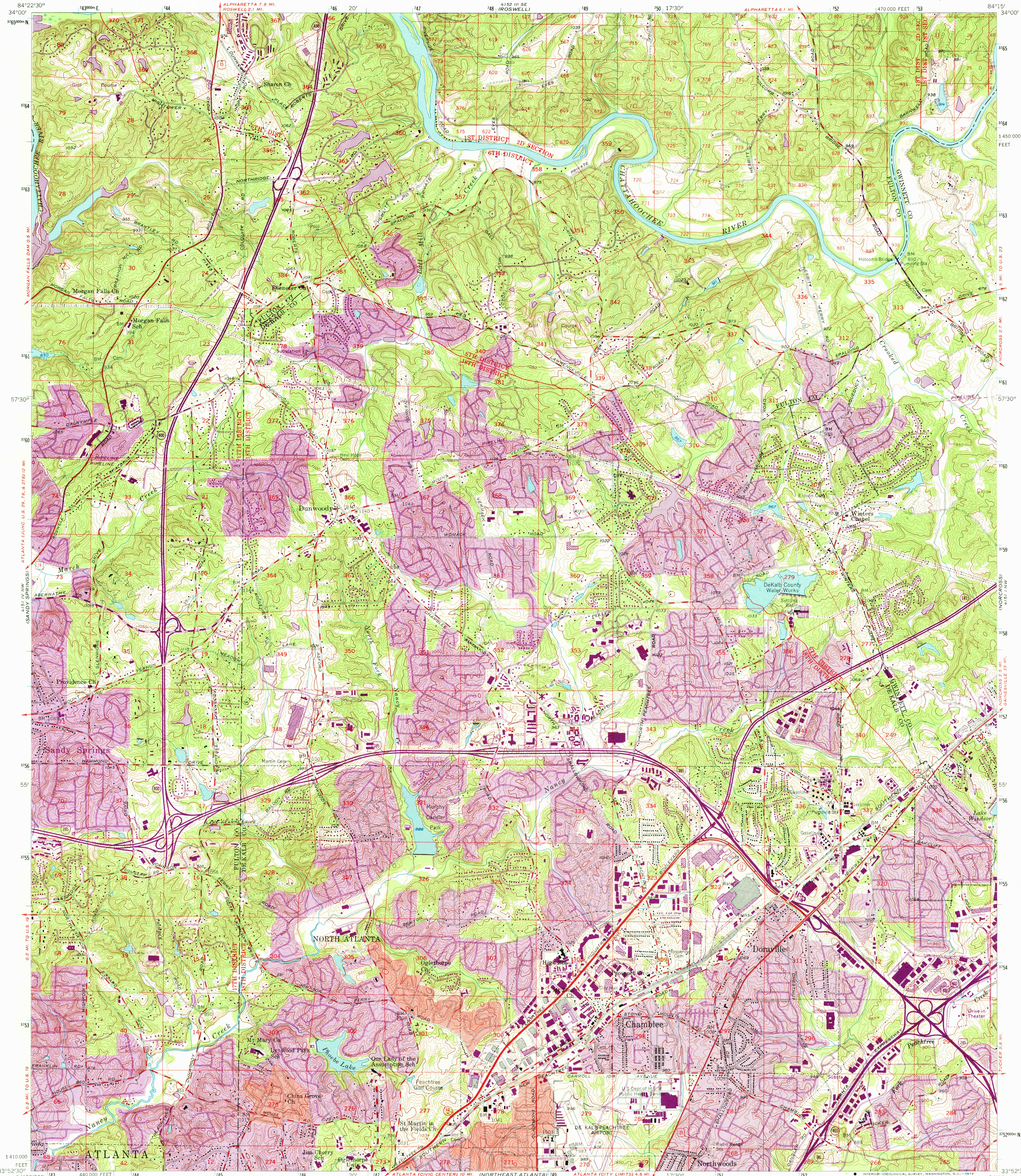


UNITED STATES
DEPARTMENT OF THE INTERIOR
GEOLOGICAL SURVEY

CHAMBLEE QUADRANGLE
GEORGIA
7.5 MINUTE SERIES (TOPOGRAPHIC)



Mapped, edited, and published by the Geological Survey

Control by USGS, USC&GS, Georgia Geodetic Survey,
and City of Atlanta

Topography from aerial photographs by stereoplanigraph

Aerial photographs taken 1952. Field check 1954

Polyconic projection. 1927 North American datum.

10,000-foot grid based on Georgia coordinate system, west zone

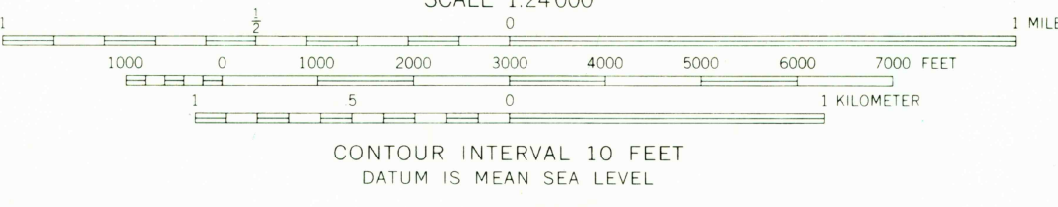
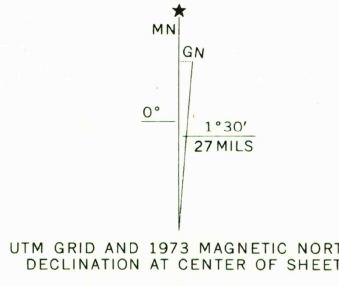
1000-meter Universal Transverse Mercator grid ticks,

zone 16, shown in blue

Red tint indicates areas in which landmark buildings are shown

Land lines from information supplied by
DeKalb County Department of Planning and
Atlanta-Fulton County Joint Planning Board

Revisions shown in purple compiled from aerial photographs
taken 1968 and 1973. This information not field checked
Purple tint indicates extension of urban areas



THIS MAP COMPLIES WITH NATIONAL MAP ACCURACY STANDARDS
FOR SALE BY U. S. GEOLOGICAL SURVEY, RESTON, VIRGINIA 22092
A FOLDER DESCRIBING TOPOGRAPHIC MAPS AND SYMBOLS IS AVAILABLE ON REQUEST



QUADRANGLE LOCATION

ROAD CLASSIFICATION	
Heavy-duty	Light-duty
Medium-duty	Unimproved dirt
Interstate Route	U. S. Route
	State Route

USGS
Historical File
Topographic Division

JUL 22 1974

CHAMBLEE, GA.
N 3352.5—W 8415.7/7.5

1954
PHOTOREVISED 1968 AND 1973
AMS 4151 IV NE—SERIES V645

3795