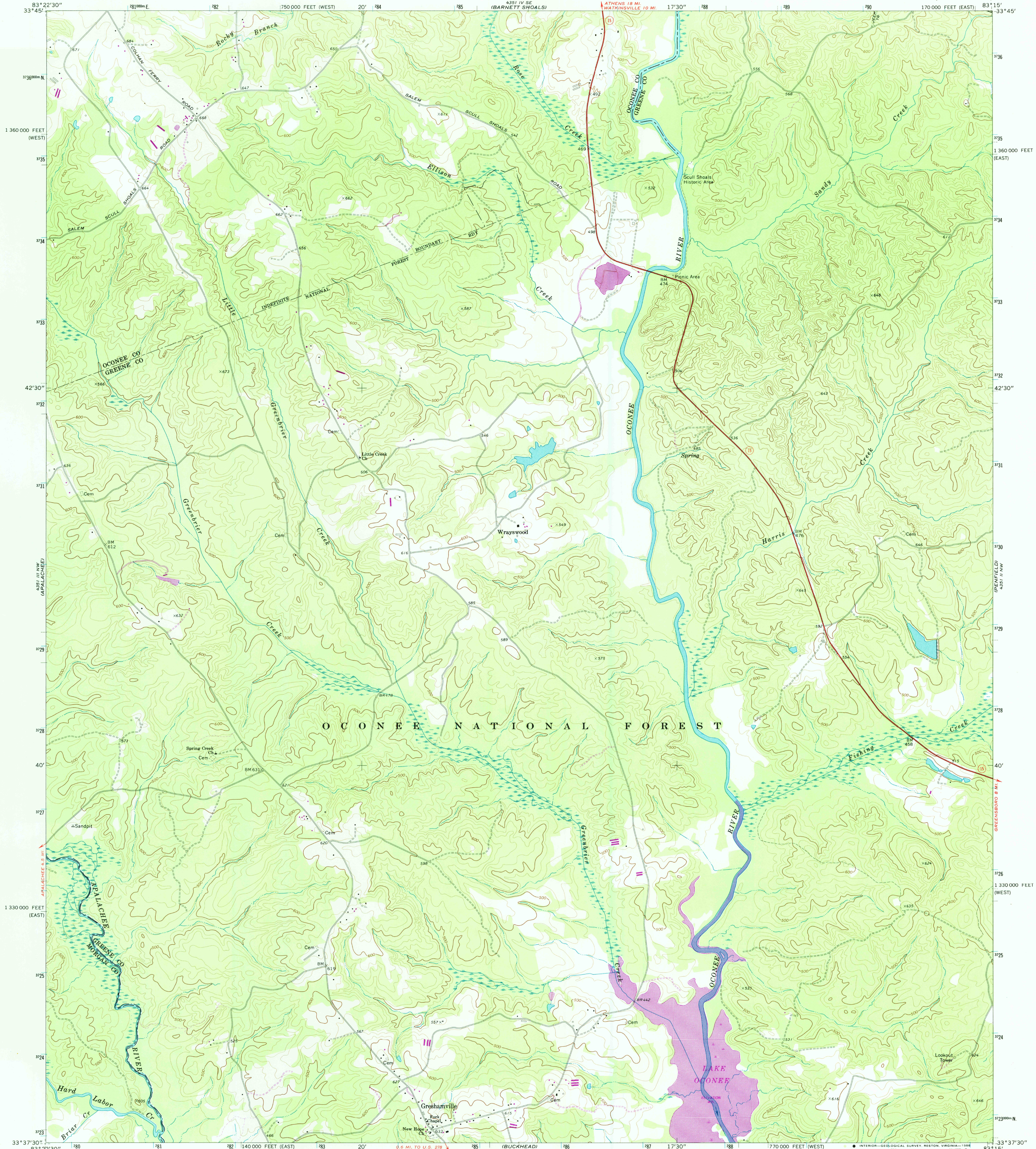


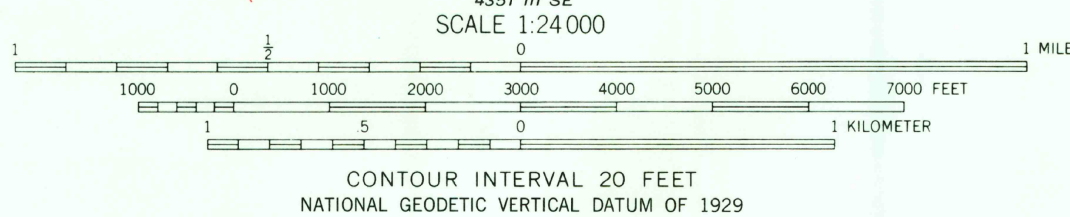
UNITED STATES  
DEPARTMENT OF THE INTERIOR  
GEOLOGICAL SURVEY

GRESHAMVILLE QUADRANGLE  
GEORGIA  
7.5 MINUTE SERIES (TOPOGRAPHIC)



Mapped, edited, and published by the Geological Survey  
Control by USGS and NOS/NOAA  
Topography by photogrammetric methods from aerial photographs taken 1971. Field checked 1972  
Projection: Georgia coordinate system, east zone (transverse Mercator)  
10,000-foot grid ticks based on Georgia coordinate system, east and west zones  
1000-meter Universal Transverse Mercator grid ticks, zone 17, shown in blue  
1927 North American Datum  
To place on the predicted North American Datum 1983 move the projection lines 11 meters south and 11 meters west as shown by dashed corner ticks  
There may be private inholdings within the boundaries of the National or State reservations shown on this map

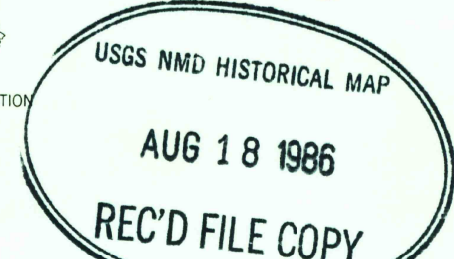
Revisions shown in purple and woodland compiled in cooperation with state of Georgia agencies from aerial photographs taken 1981 and other sources. This information not field checked  
Map edited 1985



THIS MAP COMPLIES WITH NATIONAL MAP ACCURACY STANDARDS  
FOR SALE BY U. S. GEOLOGICAL SURVEY, RESTON, VIRGINIA 22092  
A FOLDER DESCRIBING TOPOGRAPHIC MAPS AND SYMBOLS IS AVAILABLE ON REQUEST



ROAD CLASSIFICATION  
Primary highway, hard surface  
Secondary highway, hard surface  
Unimproved road  
Light-duty road, hard or improved surface  
Unimproved road  
Interstate Route  
U. S. Route  
State Route



GRESHAMVILLE, GA.  
33083-F3-TF-024

1972  
PHOTOREVISED 1985  
DMA 4351 III NE-SERIES V845