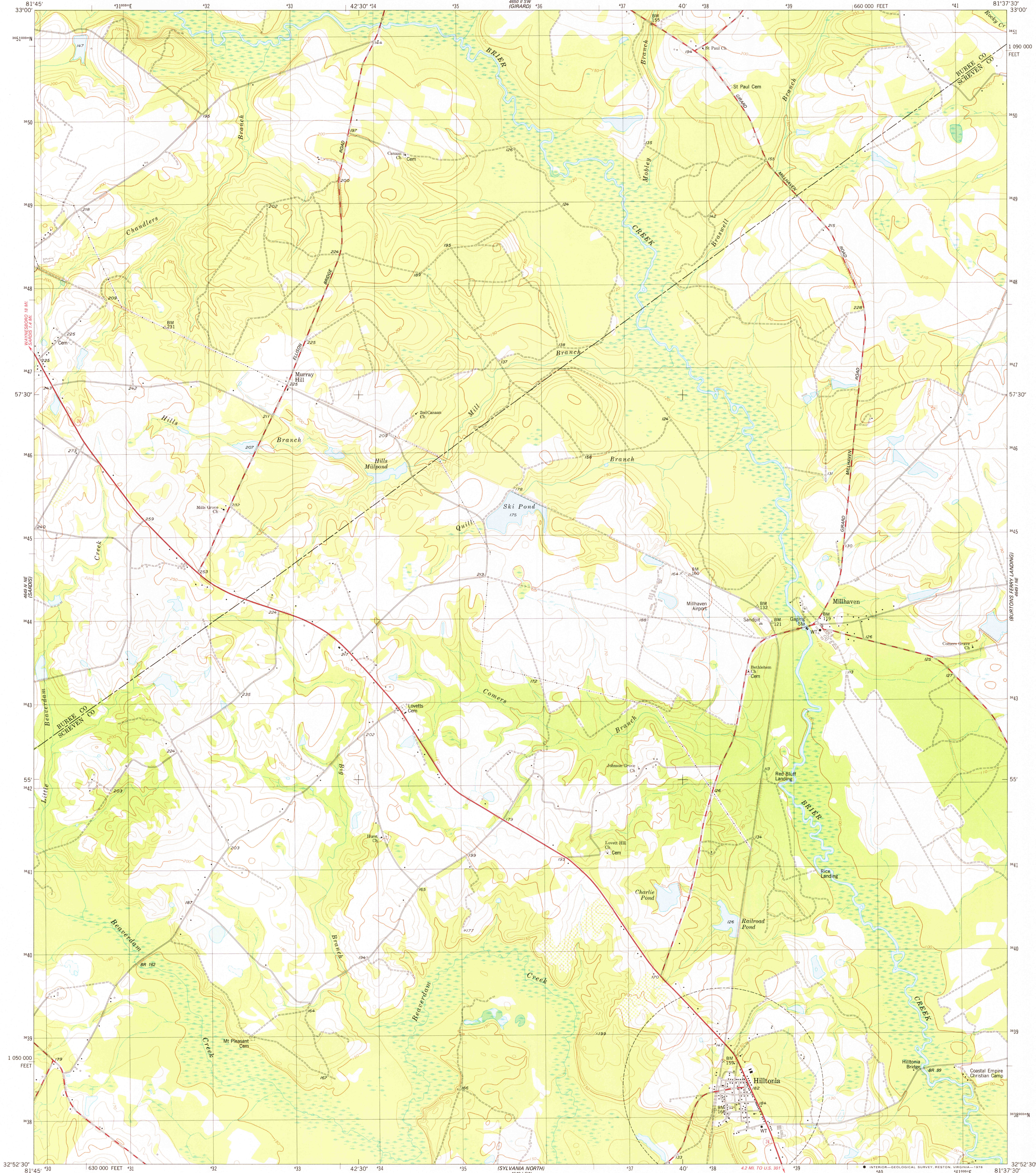
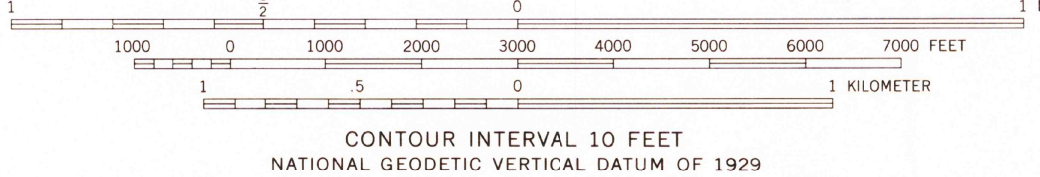
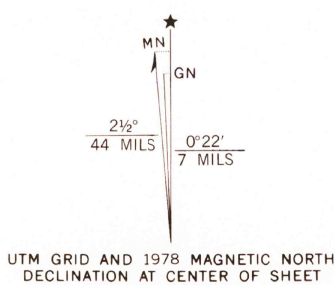


UNITED STATES
DEPARTMENT OF THE INTERIOR
GEOLOGICAL SURVEY

HILLTONIA QUADRANGLE
GEORGIA
7.5 MINUTE SERIES (TOPOGRAPHIC)
NW/4 HILLTONIA 15' QUADRANGLE



Mapped, edited, and published by the Geological Survey
Control by USGS, NOS/NOAA, and Georgia Geodetic Survey
Topography by photogrammetric methods from aerial photographs
taken 1972. Field checked 1975. Map edited 1978
Projection and 10,000-foot grid ticks: Georgia coordinate
system, east zone (transverse Mercator)
1000-meter Universal Transverse Mercator grid, zone 17.
1927 North American datum
Fine red dashed lines indicate selected fence and field lines where
generally visible on aerial photographs. This information is unchecked



THIS MAP COMPLIES WITH NATIONAL MAP ACCURACY STANDARDS
FOR SALE BY U.S. GEOLOGICAL SURVEY, RESTON, VIRGINIA 22092
A FOLDER DESCRIBING TOPOGRAPHIC MAPS AND SYMBOLS IS AVAILABLE ON REQUEST



ROAD CLASSIFICATION
Primary highway, hard surface ——— Light-duty road, hard or improved surface ———
Secondary highway, hard surface ——— Unimproved road ———
Interstate Route ——— U. S. Route ——— State Route ———
HILLTONIA, GA.
NW/4 HILLTONIA 15' QUADRANGLE
N3252.5-W8137.5/7.5
1978
AMS 4649 I NW—SERIES V845

SEP 18 1978