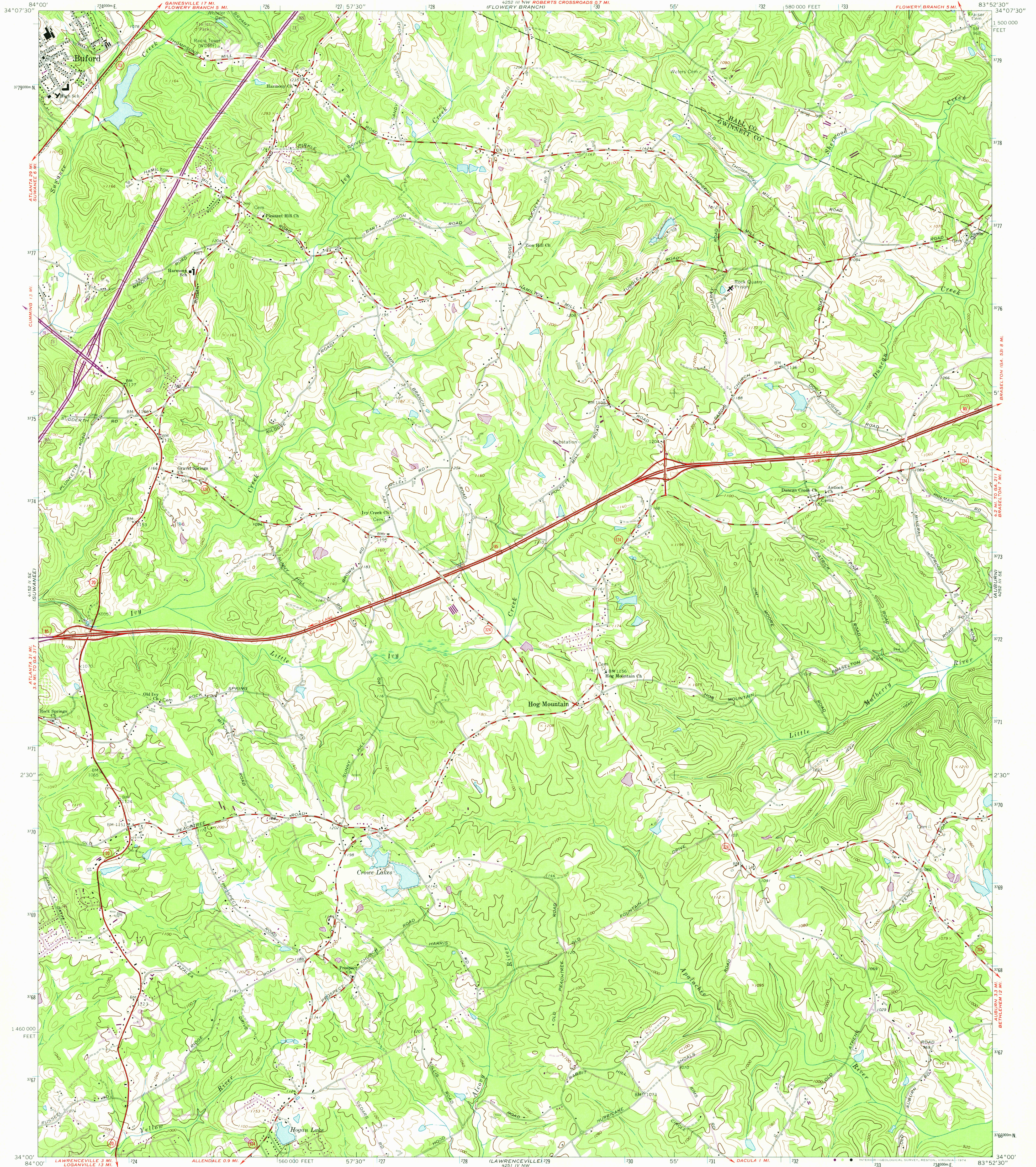


UNITED STATES  
DEPARTMENT OF THE INTERIOR  
GEOLOGICAL SURVEY

HOG MOUNTAIN QUADRANGLE  
GEORGIA  
7.5 MINUTE SERIES (TOPOGRAPHIC)



Mapped, edited, and published by the Geological Survey

Control by USGS, USC&GS, USCE, and Georgia Geodetic Survey

Topography by photogrammetric methods from aerial photographs taken 1956 and 1963. Field checked 1964

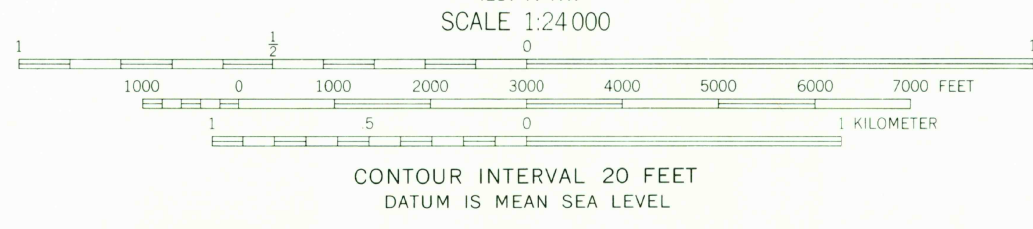
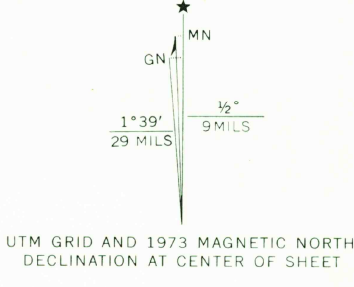
Polyconic projection. 1927 North American datum

10,000-foot grid based on Georgia coordinate system, west zone

1000-meter Universal Transverse Mercator grid ticks, zone 17, shown in blue

Fine red dashed lines indicate selected fence and field lines where generally visible on aerial photographs. This information is unchecked

Revisions shown in purple compiled in cooperation with State of Georgia agencies from aerial photographs taken 1973. This information not field checked



THIS MAP COMPLIES WITH NATIONAL MAP ACCURACY STANDARDS FOR SALE BY U.S. GEOLOGICAL SURVEY, RESTON, VIRGINIA 22092

A FOLDER DESCRIBING TOPOGRAPHIC MAPS AND SYMBOLS IS AVAILABLE ON REQUEST



USGS  
Historical File  
Topographic Division

HOG MOUNTAIN, GA.

N3400—W8352.5/7.5

PHOTOREVISED 1973  
AMS 4252 III SW—SERIES V845

NOV 0 5 1974