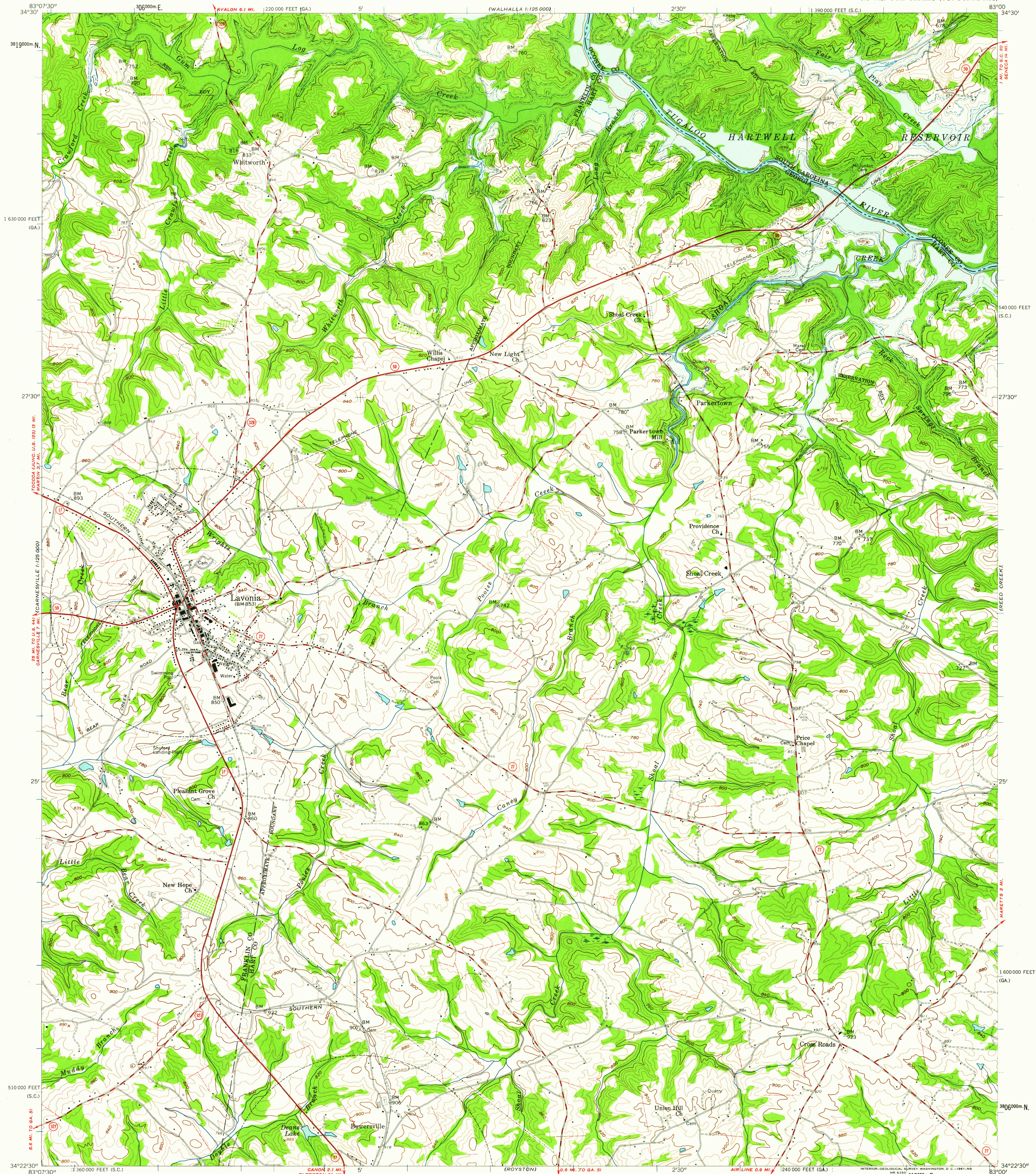


UNITED STATES  
DEPARTMENT OF THE INTERIOR  
GEOLOGICAL SURVEY

LAVONIA QUADRANGLE  
GEORGIA-SOUTH CAROLINA  
7.5 MINUTE SERIES (TOPOGRAPHIC)



Mapped, edited, and published by the Geological Survey

Control by USGS, USCGS, USCE, and Georgia Geodetic Survey

Topography from aerial photographs by photogrammetric methods

Aerial photographs taken 1955. Field check 1959

Polyconic projection. 1927 North American datum

10,000-foot grids based on Georgia coordinate system, east zone,

and South Carolina coordinate system, north zone

1000-meter Universal Transverse Mercator grid ticks,

zone 17, shown in blue

Fine red dashed lines indicate selected fence and field lines where

generally visible on aerial photographs. This information is unchecked

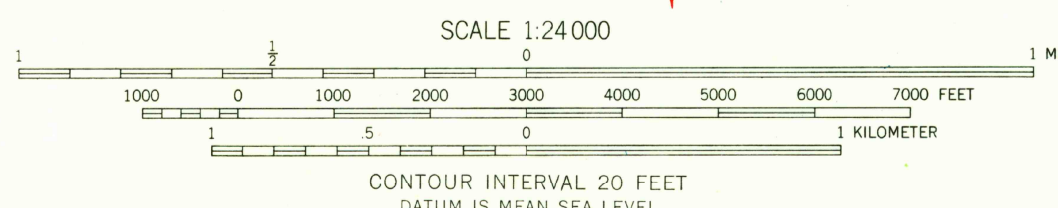
Reservation boundary from maps by U. S. Corps of Engineers

Blue hatching indicates areas to be submerged by Hartwell Reservoir

at elevation 630 feet. Areas covered by dashed light-blue pattern

are subject to controlled inundation to 665 feet

TRUE NORTH  
MAGNETIC NORTH  
APPROXIMATE MEAN  
DECLINATION, 1959



THIS MAP COMPLIES WITH NATIONAL MAP ACCURACY STANDARDS  
FOR SALE BY U. S. GEOLOGICAL SURVEY, WASHINGTON 25, D. C.  
A FOLDER DESCRIBING TOPOGRAPHIC MAPS AND SYMBOLS IS AVAILABLE ON REQUEST

ROAD CLASSIFICATION  
Heavy-duty ——— Light-duty ———  
Medium-duty ——— Unimproved dirt ———  
Slate Route —○—



USGS  
FILE COPY  
TOPOGRAPHIC DIVISION

LAVONIA, GA. - S. C.  
N 3422.5-W 8300/7.5

1959

JUN 23 1961  
JUN 23 1961

1900