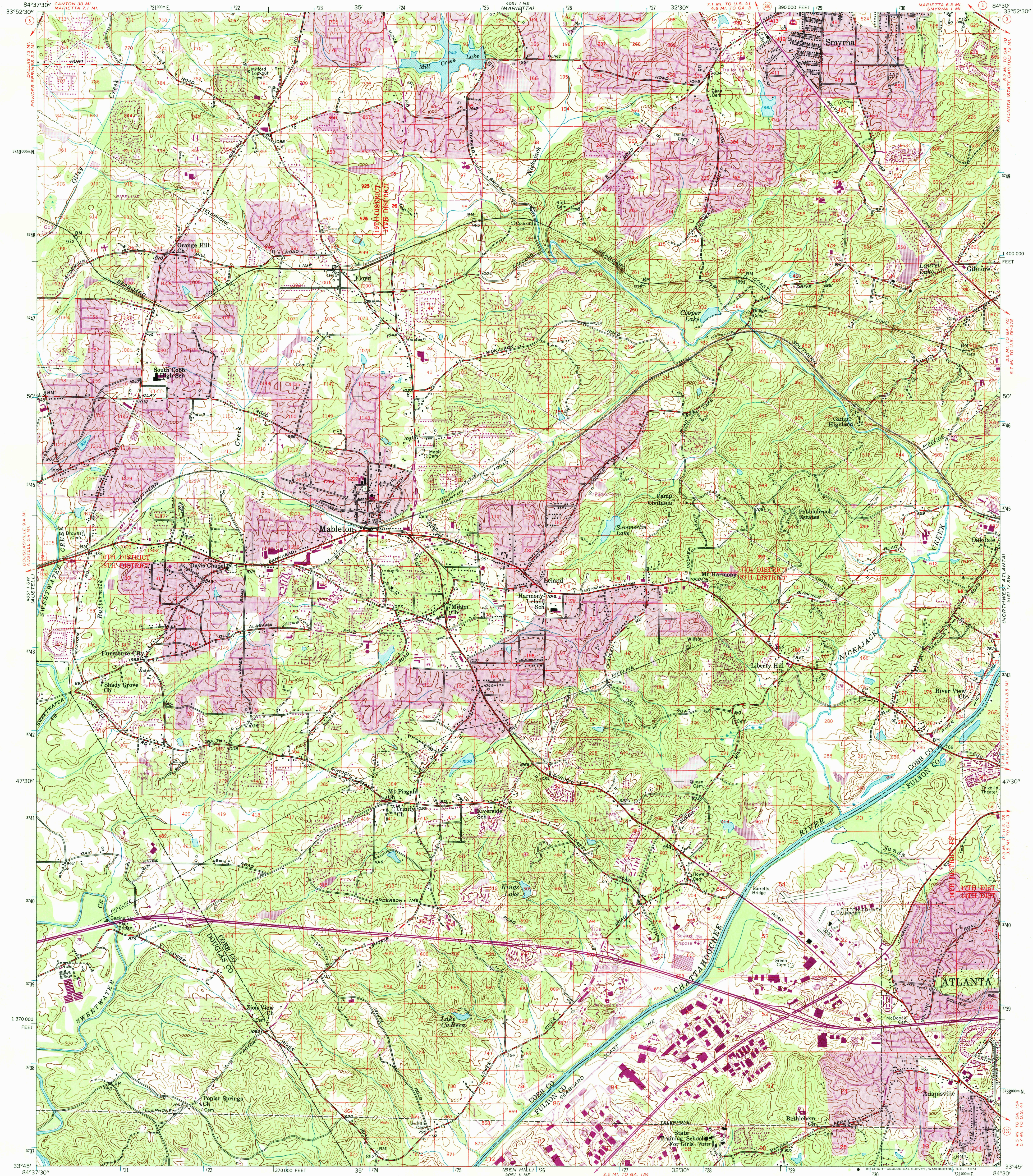


UNITED STATES
DEPARTMENT OF THE INTERIOR
GEOLOGICAL SURVEY

MABLETON QUADRANGLE
GEORGIA
7.5 MINUTE SERIES (TOPOGRAPHIC)



Mapped, edited, and published by the Geological Survey

Control by USGS, USC&GS, Georgia Geodetic Survey, and City of Atlanta

Topography from aerial photographs by multiple methods

Aerial photographs taken 1952. Field check 1954

Photocopy projection. 1927 North American datum

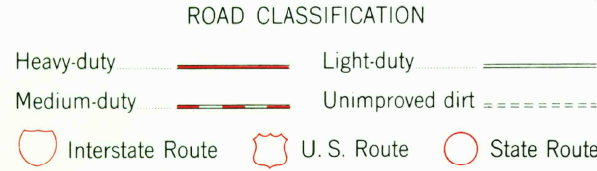
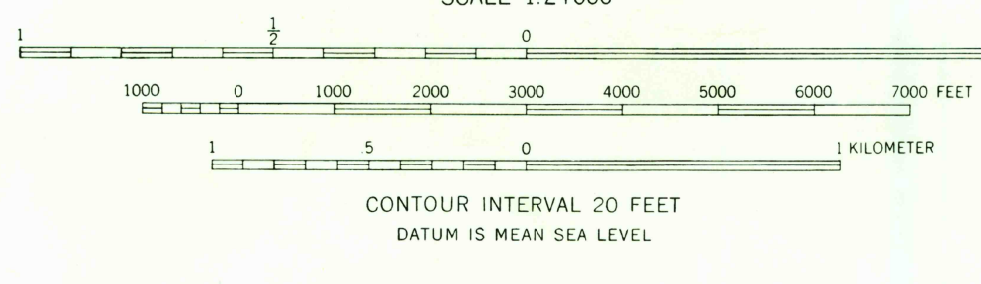
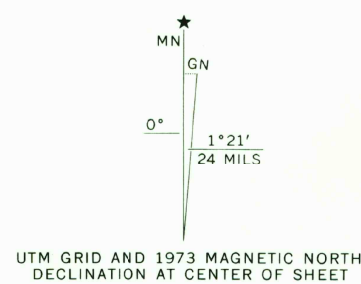
10,000-foot grid based on Georgia coordinate system, west zone

1000-meter Universal Transverse Mercator grid ticks, zone 16, shown in blue

Land lines from information supplied by Cobb County Roads and Revenues Commission and Atlanta-Fulton County Joint Planning Board

Revisions shown in purple compiled from aerial photographs taken 1968 and 1973. This information not field checked

Purple tint indicates extension of urban areas



USGS
HISTORICAL FILE
TOPOGRAPHIC DIVISION

MABLETON, GA.
N3345-W8430/7.5

1954
PHOTOREVISED 1968 AND 1973
AMS 4051 I SE—SERIES V845

SEP 12 1974

3475