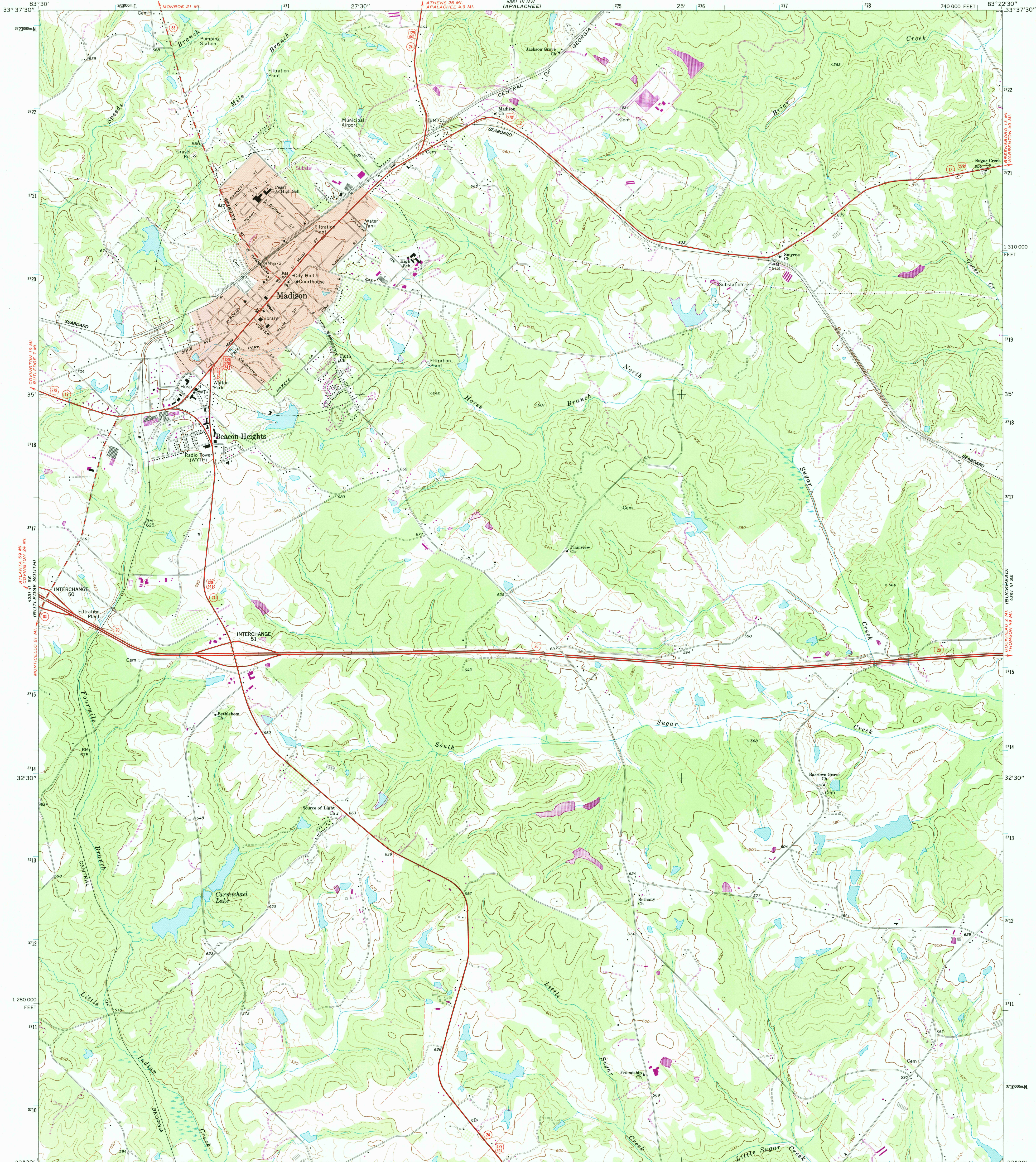


UNITED STATES
DEPARTMENT OF THE INTERIOR
GEOLOGICAL SURVEY

MADISON QUADRANGLE
GEORGIA—MORGAN CO.
7.5 MINUTE SERIES (TOPOGRAPHIC)



Mapped, edited, and published by the Geological Survey

Control by USGS, NOS/NOAA, and Georgia Geodetic Survey

Topography by photogrammetric methods from aerial photographs taken 1971. Field checked 1972

Projection and 10,000-foot grid ticks: Georgia coordinate system, west zone (transverse Mercator)

1000-meter Universal Transverse Mercator grid ticks, zone 17, shown in blue

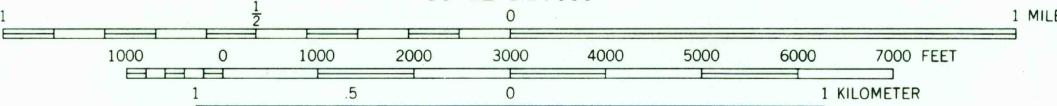
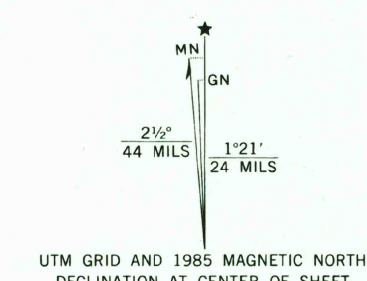
1927 North American Datum

To place on the predicted North American Datum 1983 move the projection lines 11 meters south and 11 meters west as shown by dashed corner ticks

Fine red dashed lines indicate selected fence and field lines where generally visible on aerial photographs. This information is unchecked

Red tint indicates area in which only landmark buildings are shown

Revisions shown in purple and woodland compiled in cooperation with State of Georgia agencies from aerial photographs taken 1981 and other sources. This information not field checked
Map edited 1985



CONTOUR INTERVAL 20 FEET
NATIONAL GEODETIC VERTICAL DATUM OF 1929

THIS MAP COMPLIES WITH NATIONAL MAP ACCURACY STANDARDS
FOR SALE BY U.S. GEOLOGICAL SURVEY, RESTON, VIRGINIA 22092
A FOLDER DESCRIBING TOPOGRAPHIC MAPS AND SYMBOLS IS AVAILABLE ON REQUEST



ROAD CLASSIFICATION

Primary highway, hard surface	Light-duty road, hard or improved surface
Secondary highway, hard surface	Unimproved road
Interstate Route	U.S. Route
	State Route

USGS NMD HISTORICAL MAP

MAR 28 1986

REC'D FILE COPY

MADISON, GA.
33083-E4-TF-024

1972
PHOTOREVISED 1985
DMA 4351 III SW—SERIES V845