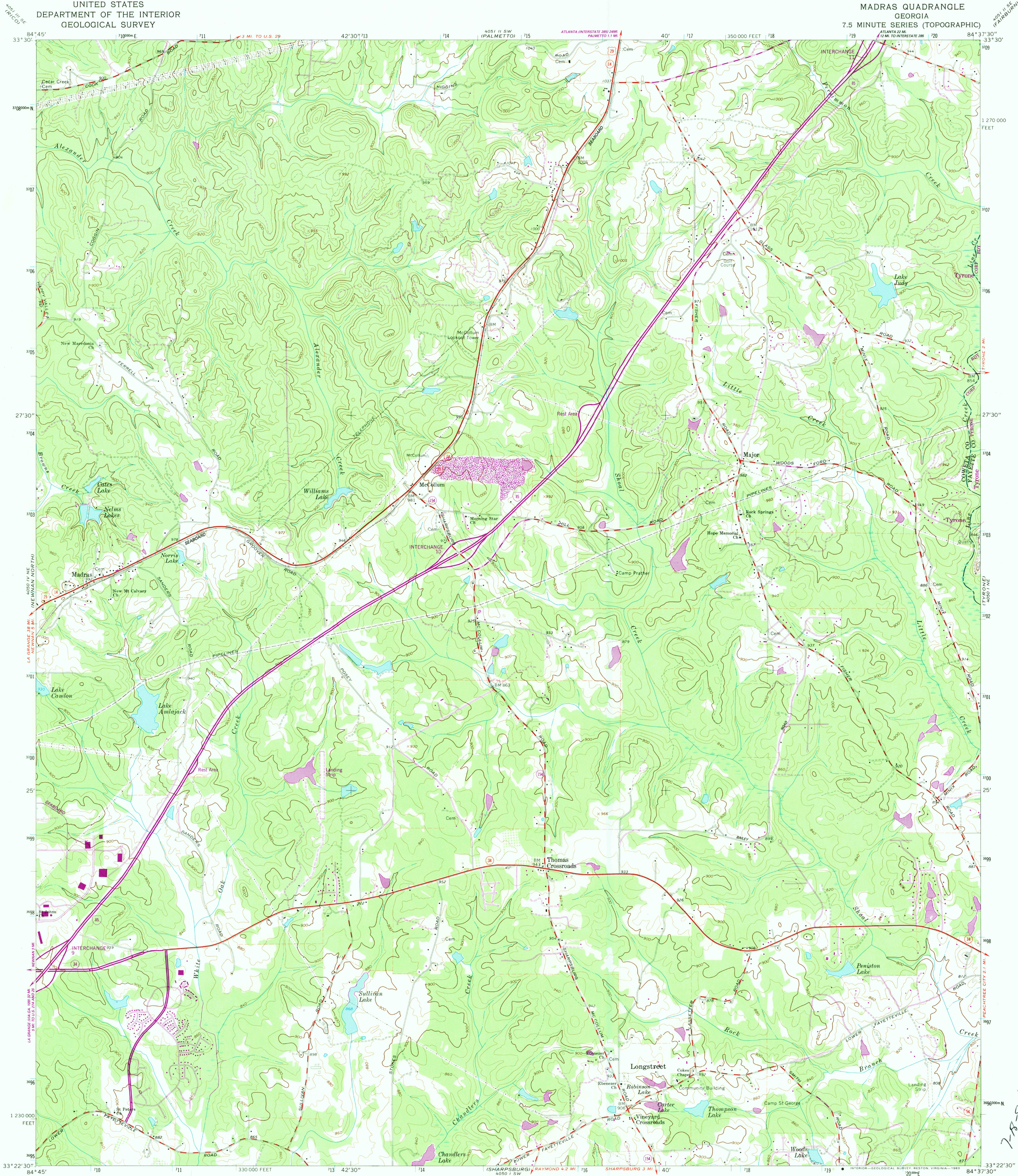


UNITED STATES
DEPARTMENT OF THE INTERIOR
GEOLOGICAL SURVEY

MADRAS QUADRANGLE
GEORGIA
7.5 MINUTE SERIES (TOPOGRAPHIC)



Mapped, edited, and published by the Geological Survey

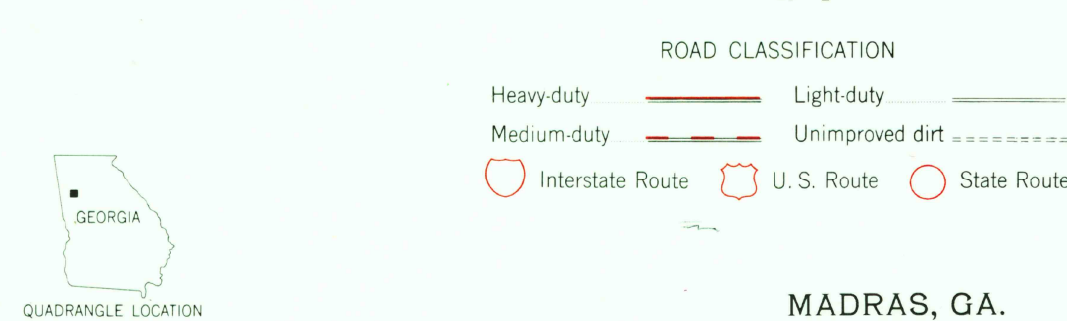
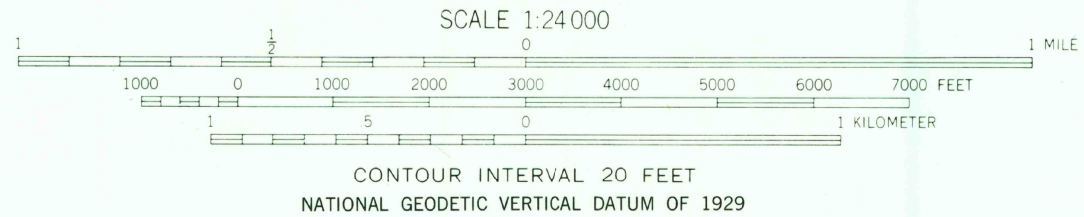
Control by USGS, NOS/NOAA, and Georgia Geodetic Survey

Topography by photogrammetric methods from aerial photographs taken 1962. Field checked 1965

Polyconic projection. 10,000-foot grid ticks based on Georgia coordinate system, west zone. 1000-meter Universal Transverse Mercator grid ticks, zone 16, shown in blue 1927 North American Datum. To place on the predicted North American Datum 1983 move the projection lines 11 meters south and 7 meters west as shown by dashed corner ticks

Fine red dashed lines indicate selected fence and field lines where generally visible on aerial photographs. This information is unchecked

Revisions shown in purple and woodland compiled from aerial photographs taken 1981 and other sources. This information not field checked. Map edited 1983



MADRAS, GA.
33084-D6-TF-024

1965
PHOTOREVISED 1983
DMA 4050 I NW - SERIES V845