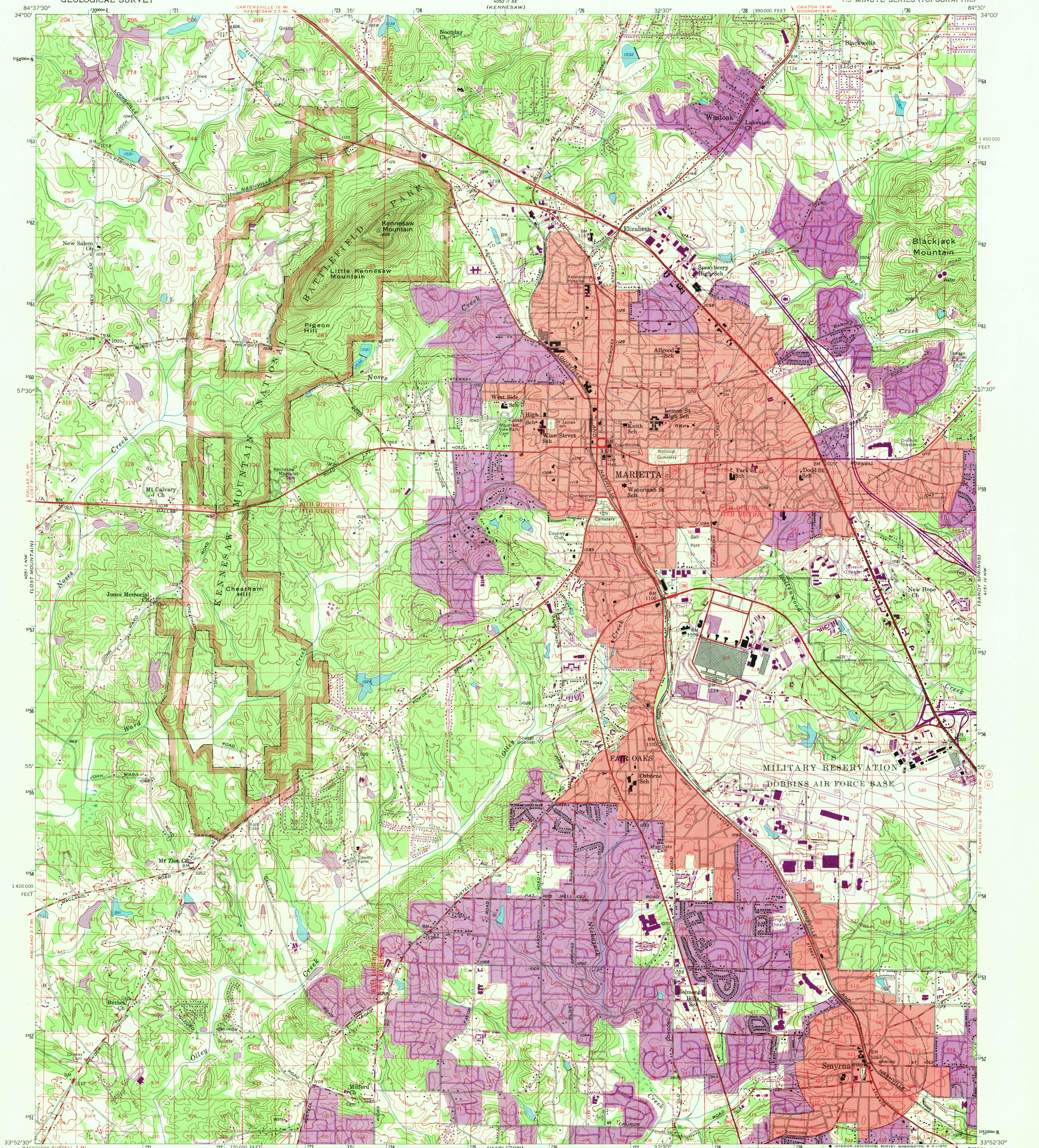


UNITED STATES
DEPARTMENT OF THE INTERIOR
GEOLOGICAL SURVEY

MARIETTA QUADRANGLE
GEORGIA—COBB CO.
7.5 MINUTE SERIES (TOPOGRAPHIC)



Mapped, edited, and published by the Geological Survey

Control by USGS, USCGS, and Georgia Geodetic Survey

Topography from aerial photographs by multiplex methods

Aerial photographs taken 1952. Field check 1954

Polycyclic projection. 1927 North American datum

10,000-foot grid based on Georgia coordinate system, west zone

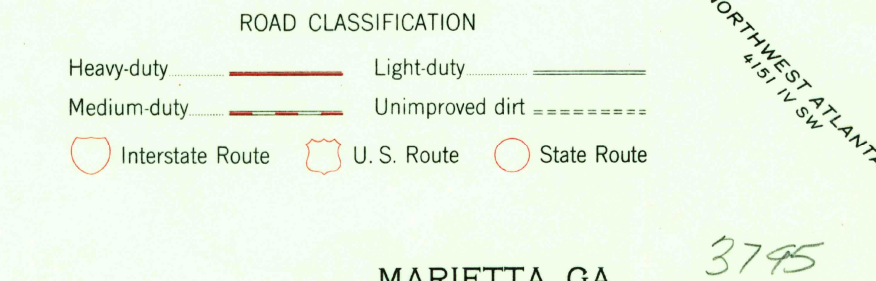
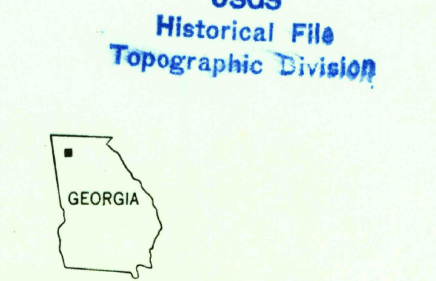
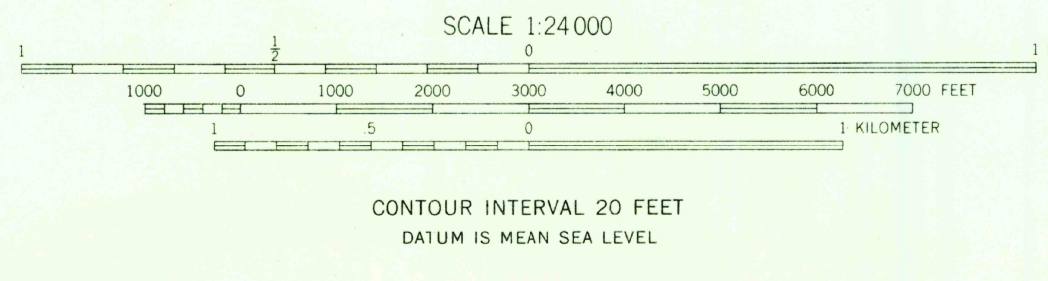
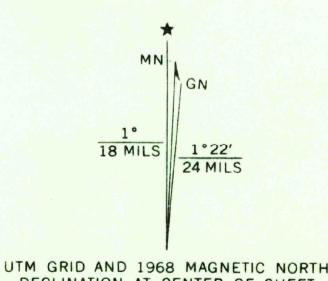
1000-meter Universal Transverse Mercator grid ticks, zone 16, shown in blue

Red tint indicates areas in which only landmark buildings are shown

Land lines from information supplied by Cobb County Roads and Revenues Commission

Revisions shown in purple compiled from aerial photographs taken 1968. This information not field checked

Purple tint indicates extension of urban areas



THIS MAP COMPLIES WITH NATIONAL MAP ACCURACY STANDARDS
FOR SALE BY U.S. GEOLOGICAL SURVEY, WASHINGTON, D.C. 20242
A FOLDER DESCRIBING TOPOGRAPHIC MAPS AND SYMBOLS IS AVAILABLE ON REQUEST

MARIETTA, GA.
N3352.5—W8430.7.5

1954
PHOTOREVISED 1968
AMS 4051 1 NE—SERIES W845

3795
MAR 24 1970