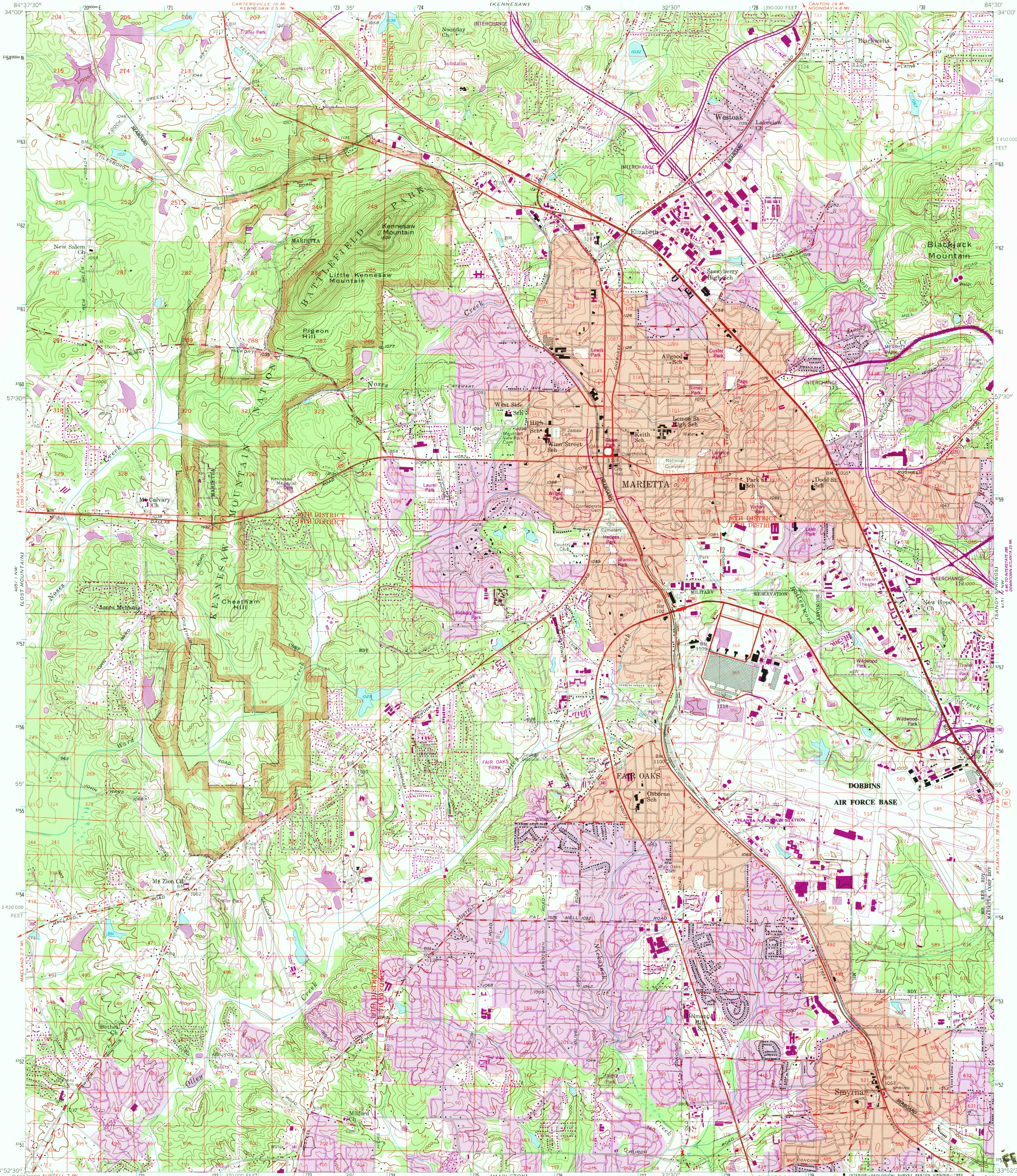


UNITED STATES
DEPARTMENT OF THE INTERIOR
GEOLOGICAL SURVEY

MARIETTA QUADRANGLE
GEORGIA-COBB CO.
7.5 MINUTE SERIES (TOPOGRAPHIC)



Maped, edited, and published by the Geological Survey
Control by USGS, NOS/NOAA, and Georgia Geodetic Survey
Topography by photogrammetric methods from aerial
photographs taken 1952. Field checked 1954.
Polyconic projection. 10,000-foot grid ticks based on Georgia
coordinate system, west zone. 1000-meter Universal
Transverse Mercator grid ticks, zone 16, shown in blue
1927 North American Datum. To place on the predicted
North American Datum 1983 move the projection lines
10 meters south and 7 meters west as shown by
dashed corner ticks.
Red tint indicates areas in which only landmark buildings are shown
Land lines from information supplied by Cobb
County Roads and Revenues Commission.
There may be private inholdings within the boundaries of the
National or State reservations shown on this map.
Revisions shown in purple and woodland compiled from aerial
photographs taken 1981 and other sources. This information
not field checked. Map edited 1983.
Purple tint indicates extension of urban areas.

UTM GRID AND 1983 MAGNETIC NORTH
DECLINATION AT CENTER OF SHEET

SCALE 1:24,000
1 1000 0 1000 2000 3000 4000 5000 6000 7000 FEET
1 5 10 15 20 25 30 35 40 45 50 KILOMETER

CONTOUR INTERVAL 20 FEET
NATIONAL GEODETIC VERTICAL DATUM OF 1929

THIS MAP COMPLIES WITH NATIONAL MAP ACCURACY STANDARDS
FOR SALE BY U.S. GEOLOGICAL SURVEY, RESTON, VIRGINIA 22092
A FOLDER DESCRIBING TOPOGRAPHIC MAPS AND SYMBOLS IS AVAILABLE ON REQUEST



ROAD CLASSIFICATION
Heavy-duty ——— Light-duty ———
Medium-duty ——— Unimproved dirt ———
Interstate Route U.S. Route State Route

MARIETTA, GA.
33084-H5-TF-024

1954
PHOTOREVISED 1983
DMA 4051 I NE-SERIES V845

FEB 22 1984
NORTHWEST ATLANTA