

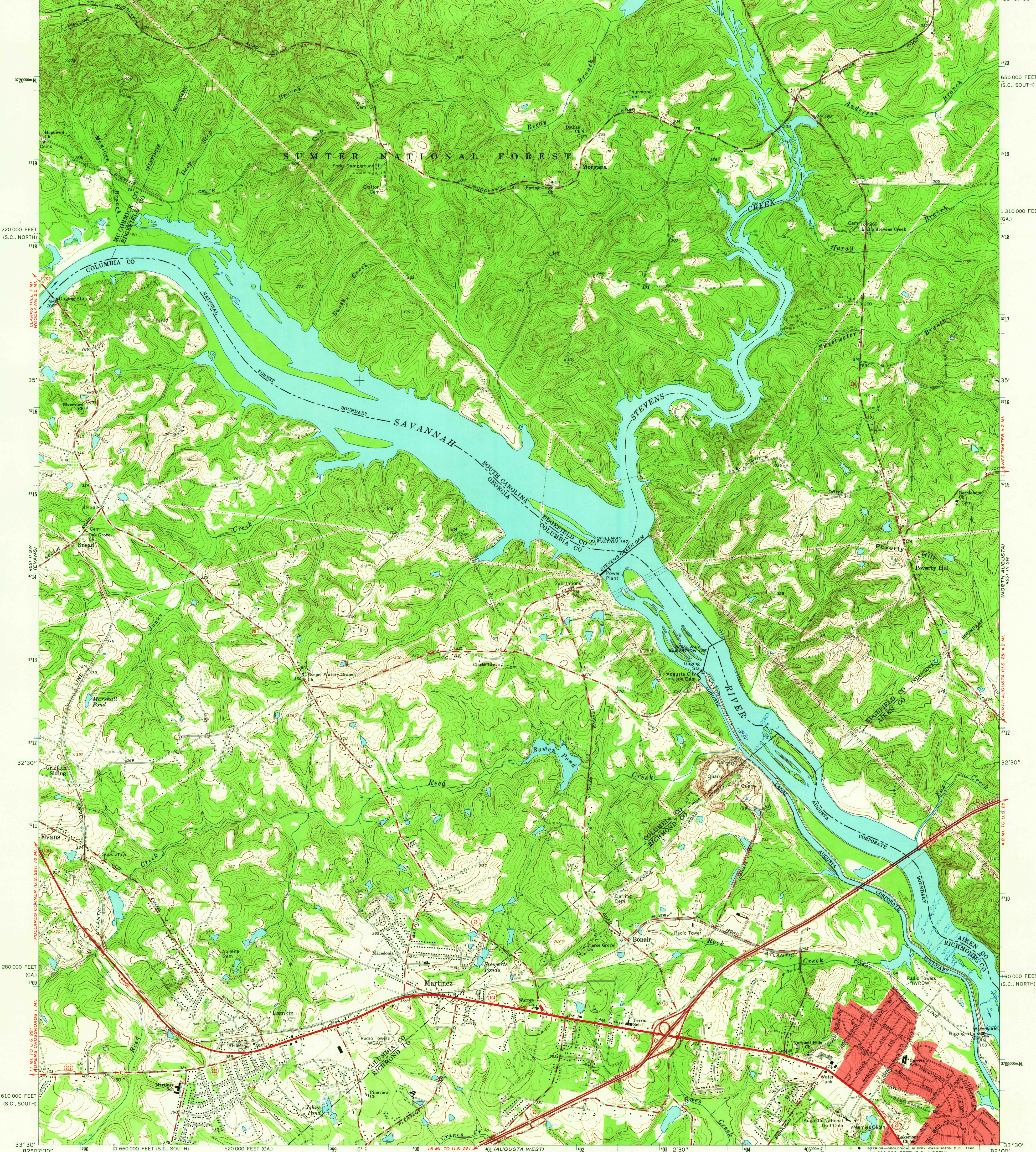
4451 II NW  
(CLARKS HILL)

4451 II NE  
(ROPER'S CROSSROADS)

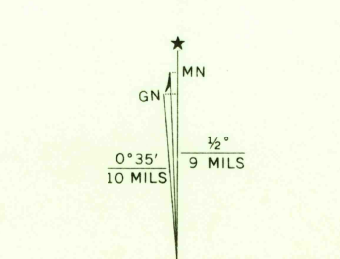
UNITED STATES  
DEPARTMENT OF THE INTERIOR  
GEOLOGICAL SURVEY

MARTINEZ QUADRANGLE  
GEORGIA - SOUTH CAROLINA  
7.5 MINUTE SERIES (TOPOGRAPHIC)  
SE/4 CLARKS HILL 15' QUADRANGLE

82°07'30" 33°37'30" 1 660 000 FEET (S.C., NORTH) 398 399 5' 400 401 4551 II NE (COLLIERS) 402 403 2'30" 404 (COLLIERS 7 MI. 1 690 000 FEET (S.C., SOUTH)) 405 550 000 FEET (GA.) 82°00' 33°37'30"



Mapped, edited, and published by the Geological Survey  
Control by USGS and USC&GS  
Topography by photogrammetric methods from aerial photographs  
taken 1962. Field checked 1964  
Polyconic projection. 1927 North American datum.  
10,000-foot grids based on Georgia coordinate system, east zone  
and South Carolina coordinate system, north and south zones  
1000-meter Universal Transverse Mercator grid ticks, zone 17,  
shown in blue  
Fine red dashed lines indicate selected fence and field lines where  
generally visible on aerial photographs. This information is unchecked  
Red tint indicates areas in which only landmark buildings are shown



USGS  
Historical File  
Topographic Division

ROAD CLASSIFICATION

Heavy-duty	Light-duty
Medium-duty	Unimproved dirt
Interstate Route	State Route

U.S.G.S.  
FILE COPY  
TOPOGRAPHIC DIVISION

QUADRANGLE LOCATION

GEORGIA

MARTINEZ, GA. - S. C.  
SE/4 CLARKS HILL 15' QUADRANGLE  
N3330-W8200/7.5

1964

AMS 4551 II SE-SERIES V845

2615