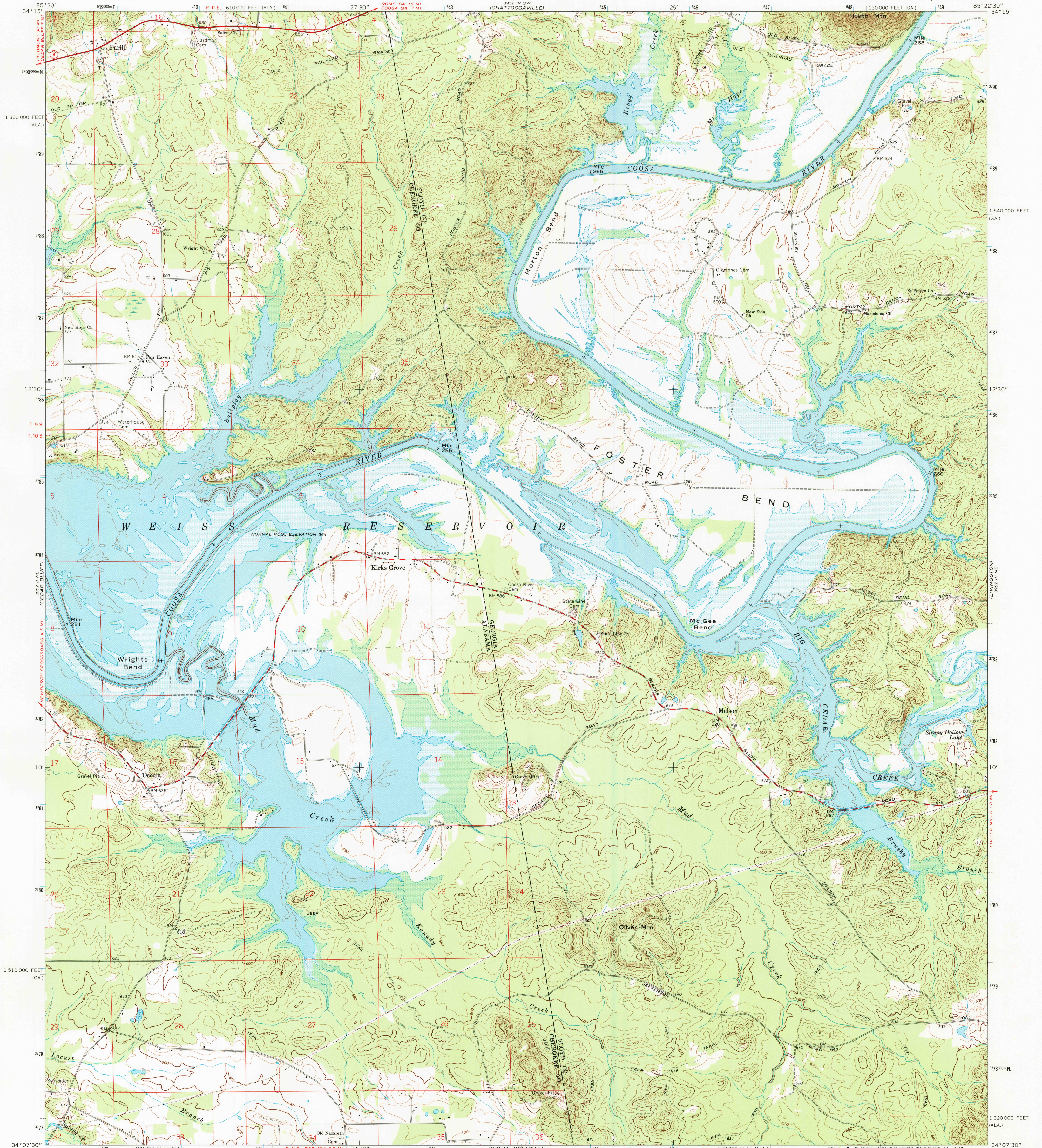


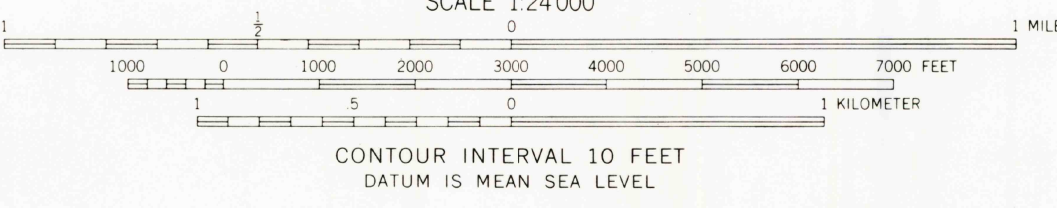
UNITED STATES
DEPARTMENT OF THE INTERIOR
GEOLOGICAL SURVEY

MELSON QUADRANGLE
GEORGIA-ALABAMA
7.5 MINUTE SERIES (TOPOGRAPHIC)



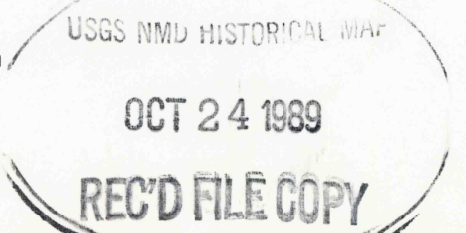
Mapped, edited, and published by the Geological Survey
Control by USGS, USCGS, USCE and Alabama Power Company
Topography by photogrammetric methods from aerial photographs
taken 1964. Field checked 1967
Polyconic projection. 1927 North American datum
10,000-foot grids based on Georgia coordinate system, west zone
and Alabama coordinate system, east zone
1000-meter Universal Transverse Mercator grid ticks,
zone 16, shown in blue
Fine red dashed lines indicate selected fence and field lines where
generally visible on aerial photographs. This information is unchanged
Areas covered by dashed light-blue pattern are subject to
controlled inundation

Map photoinspected 1982
No major culture or drainage changes observed



ROAD CLASSIFICATION
Primary highway, all weather, hard surface
Secondary highway, all weather, hard surface
Light-duty road, all weather, improved surface
Unimproved road, fair or dry weather
State Route

THIS MAP COMPLIES WITH NATIONAL MAP ACCURACY STANDARDS
FOR SALE BY U.S. GEOLOGICAL SURVEY
DENVER, COLORADO 80225, OR RESTON, VIRGINIA 22092
A FOLDER DESCRIBING TOPOGRAPHIC MAPS AND SYMBOLS IS AVAILABLE ON REQUEST



MELSON, GA. - ALA.
N3407.5 - W8522.5/7.5
1967
PHOTOINSPECTED 1982
AMS 3952 III NW-SERIES V845